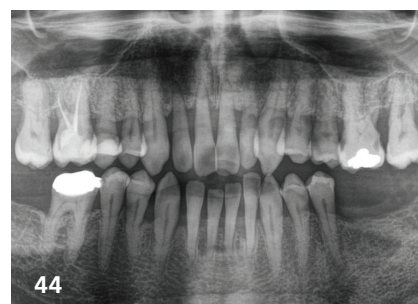




Focus on dental chains  
FDI European Regional Organization (ERO)



ECJ-Judgement: Combating corruption vs.  
protecting personal data



Digital support for simulating bite alterations  
in the periodontally compromised dentition

## EDI News

- 08 An association with sound prospects**  
BDIZ EDI General Meeting in Frankfurt am Main
- 12 Update on short, angulated and reduced-diameter implants**  
18<sup>th</sup> Expert Symposium in Cologne in February 2023
- 14 Seminar offers**  
BDIZ EDI will provide online lectures in 2022 and 2023
- 16 Congratulations to the Curriculum graduates!**  
23<sup>rd</sup> Curriculum Implantology is now completed
- 18 24<sup>th</sup> Curriculum Implantology**  
Curriculum Implantology programme
- 20 Appeal to patients: Start your perio treatment this year**  
Planned budget constraints for dental services in Germany jeopardises patient treatment
- 22 Coming home to Geneva**  
FDI World Dental Parliament
- 24 Did you ever know...**  
Facts about the BDIZ EDI
- 26 Sustainable Dentistry toolkit**  
FDI World Dental Federation introduces
- 28 Introducing Professor Katalin Nagy**  
FDI Education Committee
- 29 President's perspective**  
Freddie Sloth-Lisbjerg takes the stand
- 30 Focus on dental chains**  
FDI European Regional Organization (ERO)
- 32 Dentistry is dentistry—inside or outside the Armed Forces**  
Interview with Dr Helfried Bieber, Flottenarzt a.D. (Chief Dental Officer [ret.])
- 34 Europe Ticker**
- 36 High number of exhibitors**  
100 years of IDS: Many key players have registered
- 38 Minimally invasive trends in endodontology**  
IDS is coming up in March 2023

- 40 Combating corruption vs protecting personal data**  
Judgement of the European Court of Justice (ECJ)

- 42 Qualification for experienced implantologists**  
Certification as an EDA Expert in Implantology

## Case Studies

- 44 Digital support for simulating bite alterations in the periodontally compromised dentition**
- 50 Treatment of a case of atrophic-erosive lichen planus refractory to topical corticosteroid with endoret-PRGF and rehabilitation with dental implants**
- 55 Horizontal bone augmentation by means of preshaped titanium mesh—a five-year follow-up**
- 60 Immediate implant restoration with partial extraction therapy using an implant with a new internal conical-parallel connection**
- 66 Immediate placement of titanium implants with a zirconia neck in the aesthetic zone**

## Business & Events

- 71 Driven by science, not trends**  
Thommen Medical Education
- 72 2022 EAO congress celebrates comeback in new hybrid format**  
Nations united by innovation

## News and Views

- 03 Editorial**
- 06 Partner Organizations of BDIZ EDI**
- 07 Scientific Board / Imprint**
- 75 Product Reports/Product Studies/Product News**
- 82 Calendar of Events/Publisher's Corner**



## CONELOG® PROGRESSIVE-LINE conical performance<sup>1,2</sup> at bone level

### Precise conical connection

- long conus for reduced micromovements
- superior positional stability in comparison to other conical systems<sup>1,2</sup>
- easy positioning with excellent tactile feedback
- integrated platform switching supporting the preservation of crestal bone

[1] Semper-Hogg, W, Kraft, S, Stiller, S et al. Analytical and experimental position stability of the abutment in different dental implant systems with a conical implant-abutment connection Clin Oral Invest (2013) 17: 1017  
[2] Semper Hogg W, Zulauf K, Mehrhof J, Nelson K. The influence of torque tightening on the position stability of the abutment in conical implant-abutment connections. Int J Prosthodont 2015;28:538-41

