

BISCO'S TRIED AND TRUE CALCIUM-RELEASING FAMILY

Remember the adage “A penny saved is a penny earned”? How about “Little strokes fell great oaks”? It is time to add another adage to the list: “If it works, keep using it”. Whereas this saying has countless uses in everyday life, it is particularly applicable to work in the dental community. Here, when something is efficient and reliable, we turn to it time and time again. That is why dentists across the country continue to rely on the BISCO line of therapeutic, calcium-releasing materials for their restorative needs.

The newest addition to this family of products, launched last year, is TheraBase—a dual-cure, calcium- and fluoride-releasing, self-adhesive base/liner designed to be stronger and more durable than other base materials.

Here is how it works: when water is introduced, the non-dissolving matrix releases calcium hydroxide and fluoride ions. Then, within minutes, the ongoing ion exchange that results raises pH levels,* and the ensuing alkalinity promotes pulp vitality.¹ TheraBase is dual-curing, which means that, even though it can be light cured, the material can fully polymerise chemically throughout, and this includes the area in deep restorations where light cannot reach. The calcium-releasing base and liner features BISCO’s proprietary hydrophilic matrix, which aids in protecting

tooth structure. In addition, the material is self-adhesive and does not require bonding agents, thus saving time and costs.

A much touted benefit is that TheraBase is highly radiopaque, paving the way for improved radiographic identification and more accurate dental diagnoses. The product also has high flexural strength, absorbing stress and shock from occlusal forces.

Well suited for pulpitis risk

“I’ve been using TheraBase when I am very near to the pulp and where there’s a risk of pulpitis,” Dr Aliisha Choucair, a dentist at Laurel Dental in Leander in Texas, explained. “It’s very easy to place and has good retention I was able to restore a case that had reversible pulpitis—the tooth remained vital, the nerve settled down, and the restoration appears to be well sealed,” she continued. “I like the science behind it—releasing calcium and fluoride—and it has good handling properties.”

BISCO packages TheraBase in a dual-barrel syringe that includes Auto-Mix Cannula Tips, enabling an accurate and always steady material supply as well as simple, accurate delivery with very little waste.

Dr Leo Huck, the owner of Huck Dental in Wauwatosa in Wisconsin, commented that he thoroughly enjoys the product and said, “Having used it

for many restorations now, I have found it just works wonderfully.”

Meet the rest of the family

TheraBase joins three other Thera products, which all use the THERA technology in their formulas. TheraCal PT, for example, is a biocompatible, dual-cured, resin-modified calcium silicate that is used for pulpotomy treatment.

Dr David Martin, a dentist in Totowa in New Jersey, said that TheraCal PT is particularly useful in cases where patients cannot tolerate long chair times. The material has a working time of 45 seconds and a setting time of 5 minutes. “I recently had a young child with a large carious exposure,” he explained. “I was able to treat the lesion in a much quicker time frame, resulting in a more pleasant appointment for the child as well as an excellent final restoration.”

Moisture-tolerant and requiring fewer steps compared with other similar materials, TheraCal PT resists breakdown and provides a durable seal. It is also radiopaque and allows for immediate placement of the restorative material. “Being able to place in the presence of some moisture makes it close to an ideal material for pulpotomies,” Dr Martin added.

Released in 2017, TheraCem is a dual-cured, calcium- and fluoride-releasing, self-adhesive resin cement that contains MDP, an adhesion-promoting monomer that enhances bond strength to zirconia, metal and tooth structure without the need for additional adhesive or primer.

BISCO’s unique line of Thera products traces its lineage back to 2011, when the first member of the Thera family, TheraCal LC, was launched. This light-cured product is a resin-modified, calcium silicate-filled liner.

TheraCal LC insulates the pulp by forming a protective barrier against thermal changes.^{2,3} Its significant calcium release** also leads to a protective seal.^{2,4,5}

For BISCO, building on the success of each product means its 40-year journey will continue to evolve as dental practices throughout the world make the Thera family of products their go-to solution for all their restorative needs. ◀◀

* BISCO has on file the pH data for TheraBase.

** BISCO has on file the calcium release data for TheraCal LC.

Editorial note: A list of references is available from the publisher. This article first appeared in Dental Product Shopper.



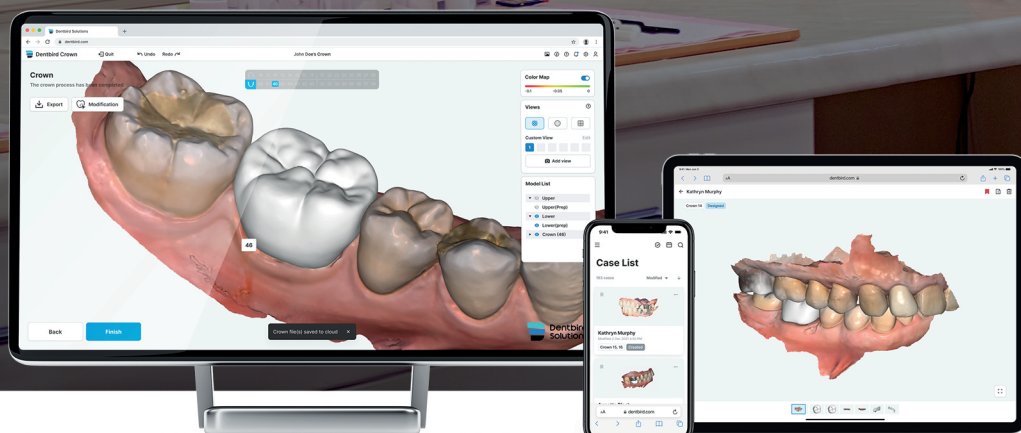
1: TheraBase. 2: TheraCem. 3: TheraCal LC.

BISCO, USA
www.bisco.com
Hall 11.3
Booth E028

AD



This guy is not designing the crown. AI just did it for him. Online.

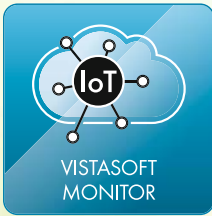


Come & see AI crown design
Hall 4.2, Stand J-019



Bis zu 75% weniger Energieverbrauch*

Nachhaltigkeit und Skalierbarkeit mit den Tyscor Saugsystemen



Halle 10.1
F11 - F29
E08/E20

duerrdental.com/ids

Radialverdichter reduziert
Energieverbrauch
um bis zu 75%.*



Monitoring und Fernwartung
durch VistaSoft Monitor
reduziert **CO₂-Emissionen**.



Wächst mit der Praxis mit: Von
zwei **bis zwölf Behandler**,
ohne Austausch der Maschine.

Made
in
Germany



Nachhaltige Produkte von Dürr Dental.

Mit unseren Tyscor Saugsystemen gehen wir den nächsten Schritt in eine nachhaltige Zukunft. Damit machen wir nicht nur unsere Produktionskette nachhaltiger, sondern auch Ihre Praxis.

Mehr unter www.duerrdental.com

*gemessen an der Tyscor VS 4 und einem vergleichbaren Seitenkanalverdichter durch das Fraunhofer Institut

**DÜRR
DENTAL**
DAS BESTE HAT SYSTEM