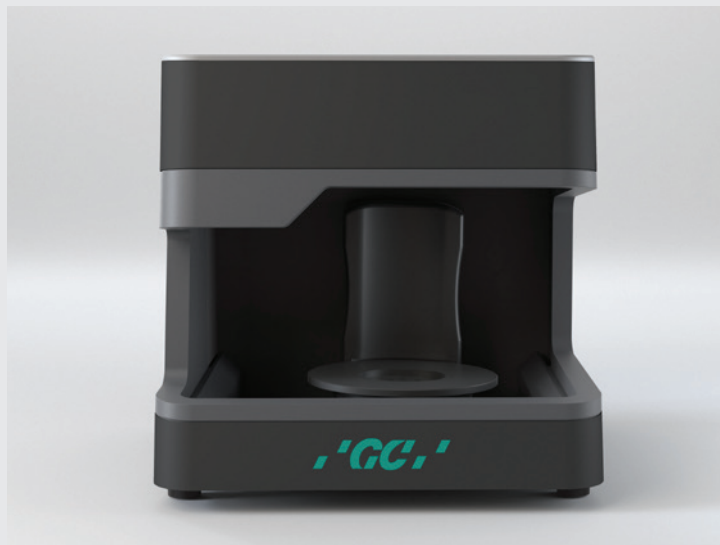


**GC PRÄSENTIERT NEUEN AADVA LAB SCAN 3, DER WELTWEIT ERSTE KI-BASIERTE UND GESTENGESTEUELTE DENTALLABORSCANNER**  
**GC INTRODUCES NEW AADVA LAB SCAN 3, THE WORLD'S FIRST AI-BASED AND GESTURE-CONTROLLED DENTAL LAB SCANNER**

■ Beim Dentalhersteller GC steht Digitalisierung ganz oben auf der Agenda. Das zeigt die nächste Generation von Laborscannern, die GC nun auf den Markt bringt: den Aadv Lab Scan 3. Mit seiner einzigartigen Objekterkennung, die auf künstlicher Intelligenz (KI) basiert, identifiziert der Scanner das eingelegte Objekt und nimmt automatisch die notwendigen Anpassungen für einen optimalen Scan vor. Anwenderinnen und Anwender müssen dabei nicht eingreifen, sondern werden dank automatisierter, durch KI gesteuerte Arbeitsabläufe entlastet und können sich auf höchste Genauigkeit beim Scannen verlassen.

Der Aadv Lab Scan 3 verwendet eine patentierte Projektionsmethode, bei der Ergebnisse ausgewertet und Prozesse ständig optimiert werden, die das Gerät steuern. Das führt zu einem zeitsparenden und fehlerfreien Scanflow.

Neben diesen besonderen Merkmalen verfügt der Scanner über zwei hochauflösende Kameras und einen fortschrittlichen 3D-Sensor. Sie tragen zu einer optimalen Datenerfassung und einer sehr hohen Genauigkeit mit einer Abweichung von weniger als 4 µm (gemäß ISO 12836) bei. Hinzu kommt eine extrem schnelle Scanzeit von 12 Sekunden



den für ein komplettes Modell (gemessen bei deaktiviertem Farbscan). Der Aadv Lab Scan 3 wird mit umfangreichem Standardzubehör geliefert.

Alle Dentalfachleute sind eingeladen, die Vorteile der Arbeitsabläufe und Lösungen von GC in Hands-on-Kursen und bei Labor-demonstrationen direkt zu erleben – auf der IDS am Messestand. Dort referieren täglich international renommierte Zahnärzte und Zahntechniker in der Speakers' Corner zu aktuellen Themen. ◀

■ Continuing its strive for digitalization, GC has released its next generation lab scanners: Aadv Lab Scan 3. With its unique object recognition, which is based on artificial intelligence (AI) technology, the scanner identifies the inserted objects and automatically makes the necessary adjustments for an optimal scan without any user intervention. These automated, AI-controlled workflows provide peace of mind.

Aadv Lab Scan 3 uses a patented projection, constantly optimising processes that control the device, which



results in time efficiency and an error-free workflow.

In addition to these unique features, the scanner offers two high-resolution cameras and an advanced 3D sensor contributing to optimal data acquisition for very high accuracy of 4 µm (ISO 12836) and an extremely fast scan time of 12 seconds for a full arch (measured with deactivated colour scanning). Aadv Lab Scan 3 comes with a wide range of standard accessories.

All dental professionals are invited to experience the benefits of

the new GC's workflows and solutions at the booth during hands-on courses and lab demos. Additional booth experience will include internationally renowned dentists and technicians daily presenting on current topics of interest on the booth at the speakers' corner. ◀

**GC Europe, Belgium**  
[www.gc.dental/europe](http://www.gc.dental/europe)  
**Hall 11.2**  
**Booth N010/O039**

AD

**STOP BY USA PAVILLION HALL 4.2, BOOTH #H41 FOR A FREE SAMPLE!**

**HURRICAINÉ®**  
**Topical Anesthetic**  
**20% Benzocaine Oral Anesthetic**  
**ORIGINAL WILD CHERRY FLAVOR**



Available in 1 fl. oz. bottles of liquid, 1 oz. bottles of gel and individually wrapped unit dose Snap -n- Go™ Swabs

**20% Benzocaine for fast, temporary relief of occasional minor irritation and pain associated with:**

- Sore mouth and throat
- Canker sores
- Minor dental procedures
- Minor injury of the mouth and gums
- Minor irritation of the mouth and gums caused by dentures or orthodontic appliances

**EFFECTIVE**

- Trusted by dental professionals for over 40 years
- Eliminates pain and discomfort

**FAST-ACTING**

- Relief within 30 seconds

**SAFE**

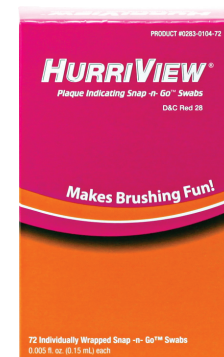
- Virtually no systemic absorption
- Available over the counter

**HURRIVIEW®**  
**Plaque Indicating Snap -n- Go™ Swabs**

**HURRIVIEW II®**  
**Two-Tone Plaque Indicating Snap -n- Go™ Swabs**

**HurriView® and HurriView II® highlight where improved oral hygiene is needed**

- HurriView highlights plaque in reddish-pink
- HurriView II highlights old plaque in blue and new plaque in reddish-pink
- Helps you show patients where they have plaque build-up & helps motivate them to improve their oral hygiene routines
- Individually wrapped
- In-office evaluation or dispense for home use
- Available in boxes of 72
- No messy rinses or tablets!



**HURRISEAL®**  
**DENTIN DESENSITIZER**



**FAST-ACTING**

Chairside results

**TREATS SENSITIVITY**

When used for cervical sensitivity, HurriSeal® will last for 6 to 9 months

**PREVENTS SENSITIVITY**

When applied under restorations, HurriSeal lasts for the lifetime of the restoration

**EASY TO USE**

No mixing or light-curing

**SOFT TISSUE FRIENDLY**

Gentle to soft tissue and does not cause gingival irritation when used as directed

**INTERESTED IN BECOMING A DISTRIBUTOR?**

Beutlich® Pharmaceuticals, LLC is currently looking for distributors worldwide. If interested, please contact Mr. Jason Dominick, International Sales:

TEL: +1-386-225-9322, Email: [jdominick@beutlich.com](mailto:jdominick@beutlich.com)

HurriCaine®, HurriView, HurriView II and HurriSeal are registered trademarks of Beutlich Pharmaceuticals, LLC. Snap -n- Go is a trademark of Beutlich Pharmaceuticals, LLC. [www.beutlich.com](http://www.beutlich.com). IDSAF 713 0123

# SHAPE DIMENSION

We create a new dimension.  
To the next future, together.

DGSHAPE is a subsidiary of Roland DG, the leading company in the digital printing business. We have roots in Roland, which has revolutionized the music industry through digital technologies. Roland Group has been providing products for digital artists to shape their ideas and creativity.

DGSHAPE has grown in the dental industry. We believe that dental technicians and dentists who pursue the functionality and esthetic of a single tooth and design human health and smiles are indeed artists.

We had many opportunities to meet artists. Inspired by the incredible creativity of the world, they believe in their creativity and continue their creative work. They create ART that transcends the trends of the times and common sense to shape the next future.

## OUR BRAND VISION

# Empowering People to Shape the Future



**DWX-53DC**

5 Axis Dental Mill with Disc Changer



**DWX-52DCi**

Dry Disc Changing Mill



**DWX-52D Plus**

Dry Dental Mill



**DWX-42W Plus**

Wet Dental Mill



**DWX-4**

Compact Dental Mill



Waiting for you



Hall 3.1,  
Booth K-60 | L-69

[dgshape.com](http://dgshape.com)



**DGSHAPE**  
A Roland Company

Make Innovation, Make Life Better.