

SHINING 3D SHARES COMPLETE WORKFLOW SOLUTIONS AND MAJOR ANNOUNCEMENTS



■ SHINING 3D focuses entirely on 3D-digitising and 3D-printing solutions, developing a full suite of digital products for both dental clinics and dental laboratories. The SHINING 3D portfolio aims to offer a complete solution covering the needs of both clinics and laboratories, including intra-oral and desktop 3D scanners and digital light processing and liquid crystal display 3D printers.

The exhibition will be a great opportunity to have a closer look and to discover SHINING 3D's complete workflow. Powerful, efficient and user-friendly solutions will be showcased, and attendees will be able to discover news from SHINING 3D exclusively at IDS.

Among the technology on display will be the AccuFab-L4D—a large-platform 3D printer with 4K resolution that supports the printing of different types of professional dental appliances and im-

proves the efficiency of denture fabrication.

SHINING 3D's Aoralscan 3 intra-oral scanner improves the overall clinical experience with its powerful and intelligent data processing capabilities. The scanning speed and the accuracy of the previous model have been improved by up to 30%, allowing for better results.

AutoScan-DS-EX Pro(H) is the latest addition to SHINING 3D's portfolio of desktop scanners. It is equipped with dual 5 MP cameras, achieving a scanning accuracy of $\leq 8 \mu\text{m}$ and thus satisfying the requirement of various applications in the dental industry.

This year, SHINING 3D will be making some big announcements, such as the debut of its first wireless intra-oral scanner, Aoralscan 3 Wireless, which provides freedom from constraints and secondary contamination, thus enhancing the whole treatment experience. It includes

a fast-heating scanning tip, greatly reduces post-processing time and boasts an outstanding power supply, among its many great features.

MetiSmile is SHINING 3D's first self-developed and manufactured facial scanner for dental applications. It can quickly capture facial information for 3D modelling in vivid texture and features mandibular movement tracking and facial measuring functions.

Fabwash is a multistage part-releasing, washing and drying system built to deliver the ease of use, consistency, speed and cleanliness demanded by dental clinics employing 3D printing. ◀

SHINING 3D Technology, Germany

www.shining3ddental.com

**Hall 3.1
Booth K040/L049**

NEOSS BIETET INTELLIGENTEN, PATIENTENFREUNDLICHEN UND EFFIZIENTEN ARBEITSABLAUF

NEOSS OFFERS SMART, PATIENT-FRIENDLY AND EFFICIENT WORKFLOW



■ Die ästhetischen Heilungsabutments mit ScanPeg von Neoss sind eine Kombination aus Gingivaformer und Scanabutment in einer revolutionären 2-in-1-Lösung. Dies ist eine vereinfachte, patientenfreundliche Lösung für genaues und einfaches intraorales Scannen. Die Verwendung der ästhetischen Heilungsabutments mit ScanPeg

spart nicht nur Zeit und Geld, sondern schont auch das Weichgewebe, da die biologische Versiegelung intakt bleibt, wenn der Gingivaformer beim Scannen nicht entfernt wird. Diese Lösung ist nicht nur für den einmaligen Gebrauch erhältlich. Sie können sie auch für das Scannen Ihrer Brückenrestauration verwenden.

Überzeugen Sie sich noch heute am Neoss-Messestand. ◀

■ The Neoss Esthetic Healing Abutments with ScanPeg are a combination of healing abutment and scan abutment in a revolutionary two-in-one solution. It is a simplified, patient-friendly solution for accurate and effortless intra-oral scanning. Using the Esthetic Healing Abutments with ScanPeg will help clinicians save time and money. As the healing abutment does not have to be removed for the scan process, biological seal remains intact, which helps preserve the soft tissue. You can also use it for your bridge restoration scans.

Make sure to check it out today at the Neoss booth. ◀

Neoss, Switzerland

www.neoss.com

**Hall 11.3,
Booth G010/H029**

CURAPROX HYDROSONIC PRO – DIE PERFEKTIONISTIN MIT DEM CLEVEREN KNICK

CURAPROX HYDROSONIC PRO – THE PERFECTIONIST WITH THE CLEVER CURVE

■ Professionelle Zahnpflege für zu Hause? Mit der Hydrosonic pro, der Schallzahnbürste des Schweizer Mundhygienespezialisten Curaprox, ist das möglich, denn sie sorgt für perfekte Mundhygiene bis in den letzten Winkel dank des cleveren 10°-Knickes im Bürstenaufsatz. Der tropfenförmige Bürstenkopf sorgt mit seinen feinen Curen-Filamenten und den sieben Powerstufen für die individuelle Auswahl der Reinigungsbewegungen (bis 84.000 Bewegungen pro Minute) für saubere Zähne.

Professionelle Zahnpflege für zu Hause

Eine echte Perfektionistin für saubere, glatte Zähne. Sanft und schonend mit drei verschiedenen Bürstenköpfen (power, sensitive und single) wird jeder einzelne Zahn gereinigt. Durch die hohe Anzahl der Schwingungen der speziell angeordneten Curen-Filamente – außen lang und innen kurz – werden Plaque, Speisereste und Bakterien effektiv entfernt. Die weichen Curen-Filamente eignen sich auch für Diabetikerinnen und Diabetiker, Personen mit Implantaten sowie Zahnspangenträgerinnen und -träger mit empfindlichem Zahnfleisch.

Professionell gepflegt, auch unterwegs

Einmal geladen, hält der Akku im Handstück etwa 60 Minuten bei täglich 4 Minuten putzen. Die Leistung bleibt bis zum Schluss gleichmäßig stark. Der Akku kann über die handliche medaillengroße Ladestation oder das mitgelieferte USB-Ladekabel aufgeladen werden. Ein praktisches, robustes Etui enthält zwei zusätzliche Bürstenaufsätze. ◀

Curaprox, which supports perfect oral hygiene. Owing to the clever 10°-angled brush head, patients can easily reach all areas in the oral cavity. The gentle drop-shaped brush head ensures clean teeth with its fine Curen filaments and seven power levels for individual selection of cleaning movements (up to 84,000 movements per minute).

Professional dental care at home

A true perfectionist for clean, smooth teeth. Gentle and soft, with three different brush heads (power, sensitive and single), every single tooth is cleaned. The high number of movements of the specially arranged Curen filaments—long filaments on the outside and short filaments on the inside of the brush head—remove plaque, food debris and bacteria effectively. The soft Curen filaments are also suitable for patients with diabetes, implants and or braces, who typically have sensitive gingivae.

Professionally cared even when on the move

Once charged, the battery in the handpiece lasts about 60 minutes if you brush 4 minutes daily. The power remains consistently strong until the end. The battery can be charged using the medalion-sized charging station or the included USB cable. A practical, robust case contains two additional brush heads. ◀

Curaden, Germany

www.curaden.de

**Hall 5.2
Booth D051**

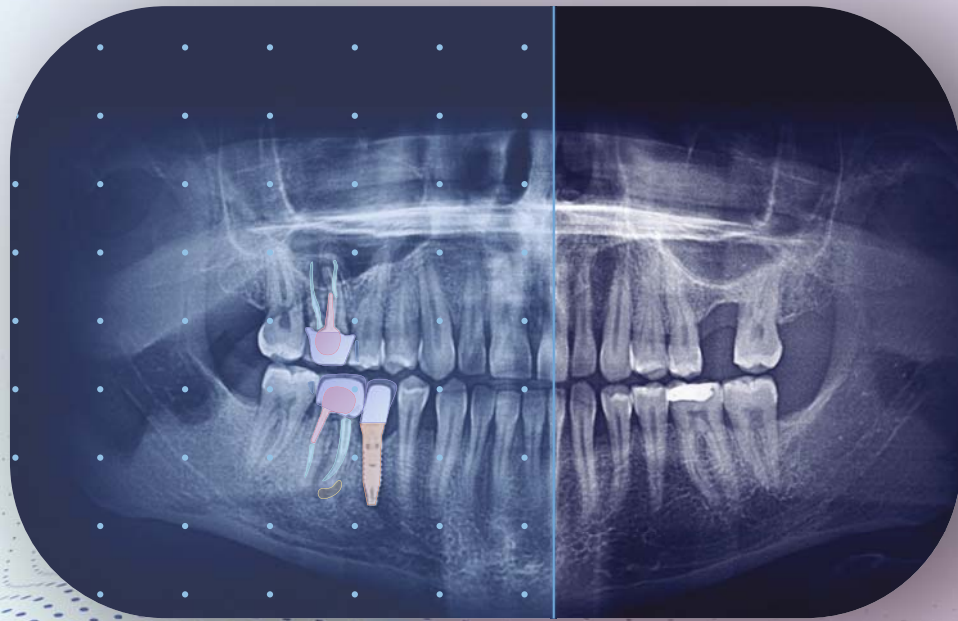
■ Professional dental care at home? It is possible with the Hydrosonic pro, the sonic toothbrush from Swiss oral hygiene specialists





allisone

THE BEST OF HUMAN & ARTIFICIAL INTELLIGENCE



Booth G050
Hall 11.1

+100 000

X-rays augmented

+2 000

Users

+1 000 000

Images used for training

- ✓ Improves practitioner-patient trust
- 📈 Increases adherence to treatment plan
- ⚡ Boost efficiency in the daily practices

Join the future
of dentistry

