



## Was man zur IDS wissen muss *Useful information*

### Veranstalter

Koelnmesse und Gesellschaft zur Förderung der Dental-Industrie (GFDI), Wirtschaftsunternehmen des Verbandes der Deutschen Dental-Industrie (VDDI)

### Veranstaltungsort

- ▶ Koelnmesse, Messeplatz 1, 50679 Köln, Deutschland, bei persönlicher Teilnahme
- ▶ Die digitale Plattform IDSconnect für die virtuelle Teilnahme

### Öffnungszeiten

- ▶ 14.-18. März 2023
- ▶ Täglich von 9:00-18:00 Uhr für Besucher
- ▶ Täglich von 8:00-19:00 Uhr für Aussteller

### Eintrittspreise

- ▶ Tageskarte: 15,00€
- ▶ Tageskarte für Schüler und Studenten: 7,50€
- ▶ IDSconnect: Kostenlos mit Registrierung

### IDSconnect

Parallel zur physischen Ausstellung bietet die digitale Plattform IDSconnect Informationen über Produkte und Systemlösungen und ermöglicht das Streaming von Webinaren, Pressekonferenzen, Veranstaltungen und persönlichen Gesprächen zwischen Unternehmensvertretern und Kunden.

### Hygieneprotokolle

Die COVID-19-Beschränkungen für Messen und Veranstaltungen in Nordrhein-Westfalen wurden vollständig aufgehoben und Besucherinnen und Besucher müssen auf dem Messegelände und in den Hallen keinen Mund-Nasen-Schutz tragen. Die IDS-Organisatoren fördern dennoch die grundlegenden Hygieneprotokolle wie regelmäßiges Händewaschen, Niesen in die Armbeuge, Vermeidung von Körperkontakt und die Nutzung der bereitgestellten Händedesinfektionsmittel.

### An- und Abreise zur Messe

Personen in Besitz eines IDS 2023-Tickets können die öffentlichen Verkehrsmittel im Verkehrsgebiet Rhein-

Sieg und Rhein-Ruhr kostenlos nutzen. Das Gelände der Koelnmesse ist gut an das städtische Verkehrsnetz angebunden. Die S-Bahn-Linien 6, 11, 12 und 19 fahren vom Bahnhof Köln Messe/Deutz (gegenüber dem Eingang Süd) ab und erreichen den Kölner Hauptbahnhof in wenigen Minuten. Die U-Bahn-Linien 1 und 9 halten an der Haltestelle Bahnhof Deutz (3 Minuten Fußweg vom Südeingang), die Linien 3 und 4 an der Haltestelle Koelnmesse (Osteingang). Taxistände gibt es an allen vier Haupteingängen. Bei schönem Wetter bietet die Hohenzollernbrücke Fußgängern eine Alternative unter freiem Himmel, um in die City zu gelangen.

### Barrierefreie Messe

Die Messeeingänge Nord, Ost und West verfügen im Erdgeschoss über Kassen und Garderoben sowie Aufzüge zu den Messehallen. Der Eingang Süd ist über einen Außenaufzug über Tor F zu erreichen. Besucherinnen und Besucher mit Behinderungen oder eingeschränkter Mobilität können im Sanitätszentrum Nord (Halle 7) und im Sanitätszentrum Ost (Halle 11.1) gegen Pfand manuelle oder elektrische Rollstühle ausleihen. Behindertentoiletten befinden sich an allen Eingängen und in den Hallen.

### Internet

Über das WLAN-Netz #hotspot.koelnmesse ist nach Anmeldung auf der Portalseite kostenloses WLAN verfügbar.

### Geld

In Deutschland gilt der Euro als gesetzliches Zahlungsmittel. Die Wechselkurse lagen am 20. Februar bei 0,94 € für 1 US-Dollar und 1,13 € für 1 £.

Kontaktloses Bezahlen wird am gesamten Veranstaltungsort akzeptiert.

### Andachtsräume

Muslimische Gebetsräume befinden sich im Congress-Centrum Ost (3. Obergeschoss, Raum 6) und in Halle 8 (Raum 8.2.05).

### Wichtige Telefonnummern

- ▶ Polizei: 110
- ▶ Feuerwehr und Rettungsdienst: 112

- ▶ Sanitätsstation, Halle 7: +49 221 821-3517
- ▶ Sanitätsstation, Halle 11.1: +49 221 821-2608
- ▶ Informationszentrale der Koelnmesse: +49 180 6773577
- ▶ Messewache Nord: +49 221 821-2551/-2552
- ▶ Messewache Ost: +49 221 821-2549/-2550

### Organisers

Koelnmesse and the Society for the Advancement of the Dental Industry (GFDI), the commercial enterprise of the Association of the German Dental Industry (VDDI)

### Venue

- ▶ Koelnmesse, Messeplatz 1, 50679 Cologne, Germany, for in-person attendance
- ▶ The IDSconnect digital platform for virtual participation

### Exhibition opening hours

- ▶ 14-18 March 2023
- ▶ Daily from 9:00-18:00 for visitors
- ▶ Daily from 8:00-19:00 for exhibitors

### Admission price

- ▶ Day ticket: €15.00
- ▶ Day ticket for students: €7.50
- ▶ IDSconnect: Free with registration

### IDSconnect

In tandem with the physical exhibition, the IDSconnect digital platform will offer information on products and system solutions and will enable the streaming of webinars, press conferences, events and one-to-one conversations between company representatives and clients.

### Hygiene protocols

COVID-19 restrictions for trade fairs and events in North Rhine-Westphalia have been lifted completely and visitors are not required to wear face masks on the fairgrounds or in the halls. IDS organisers nonetheless encourage the basic hygiene protocols of regular hand washing, sneezing into one's elbow, avoiding physical contact

and using the provided hand disinfection facilities.

### Getting to and from the show

IDS 2023 ticket holders can use public transport within both the Rhein-Sieg and the Rhein-Ruhr transport areas free of charge. The Koelnmesse grounds are well connected to the city's transport network. Suburban (S-Bahn) Lines 6, 11, 12 and 19 depart from the Köln Messe/Deutz train station (opposite the south entrance) and reach Cologne main station (Köln Hauptbahnhof) in just a few minutes. Underground Lines 1 and 9 stop at the Bahnhof Deutz station (3 minutes' walk from the south entrance), and 3 and 4 stop at the Koelnmesse station (east entrance). Taxi ranks can be found at all four main entrances and those wishing to walk back to the central city can use the Hohenzollern Bridge.

### Barrier-free trade fair

The North, East and West entrances to the trade fair have box offices and cloakrooms on the ground floor and lifts to the exhibition halls. Entrance South can be reached via an outside lift via Gate F. Visitors with disabilities or restricted mobility can borrow manual or electric wheelchairs from the Medical Centre North (Hall 7) and Medical Centre East (Hall 11.1) in ex-

change for a refundable deposit. Disabled toilet facilities are located at all entrances and throughout the halls.

### Internet

Wi-Fi is available free of charge via the WLAN network #hotspot.koelnmesse after registering on the portal site.

### Money

Germany uses the euro as legal tender and the exchange rates as at 20 February were €0.93 to US\$1 and €1.12 to £1.

Contactless payment will be accepted throughout the venue.

### Places of worship

Muslim prayer rooms are located in Congress Centre East (third floor, Room 6) and in Hall 8 (Room 8.2.05).

### Important numbers

- ▶ Police: 110
- ▶ Fire and ambulance: 112
- ▶ Medical centre, Hall 7: +49 221 821-3517
- ▶ Medical centre, Hall 11.1: +49 221 821-2608
- ▶ IDS visitor hotline: +49 180 6773577
- ▶ Security Office North: +49 221 821-2551/-2552
- ▶ Security Office East: +49 221 821-2549/-2550

## today

## About the publisher

### Editorial/Administrative Office

ARGE IDS today GBR  
Dental Tribune International GmbH  
OEMUS MEDIA AG  
Holbeinstraße 29  
04229 Leipzig  
Germany

**Phone**  
+49 341 48474-302

**Fax**  
+49 341 48474-173

**Websites**  
www.zwp-online.info  
www.dental-tribune.com

**Publisher**  
Torsten OEMUS

**Representative,**  
Dental Tribune International GmbH  
Torsten OEMUS

### Representatives, OEMUS MEDIA AG

Ingolf Döbbecke, Lutz Hiller

### Chief Content Officer

Claudia Duschek (V.i.S.d.P.)

### Editors

Franziska Beier, Jeremy Booth, John Cisnik, Anisha Hall Hoppe, Christin Hiller, Kerstin Oesterreich, Iveta Ramonaite

### Production Executive

Gernot Meyer

### Production

Lisa Greulich, Fanny Haller, Aniko Holzer, Alexander Jahn, Frank Jahr, Pia Kraß, Stephan Krause, Timon Leidenheimer, Josephine Ritter, Franziska Schmid, Sarah Schröter, Nora Sommer-Zernechel

today appears during the 40<sup>th</sup> International Dental Show in Cologne on 17 March 2023. The newspaper and all articles and illustrations therein are protected by copyright. Any utilisation without prior consent from the editor or publisher is inadmissible and liable to prosecution. No responsibility shall be assumed for information published about associations, companies and commercial markets. General terms and conditions apply; legal venue is Leipzig, Germany.

# Do you want *one impression machine* for your scanning needs?

## NeoScan™ 1000

NeoScan 1000 is a fast, accurate and easy-to-use intraoral scanner that provides the possibility for a flexible workflow, saving you time and money. Best of all, the accuracy is better or equal to top leading brands, with significantly less cost and no license fees. Stop by our booth Hall 11.3 Stand G010-H029 and experience it yourself.



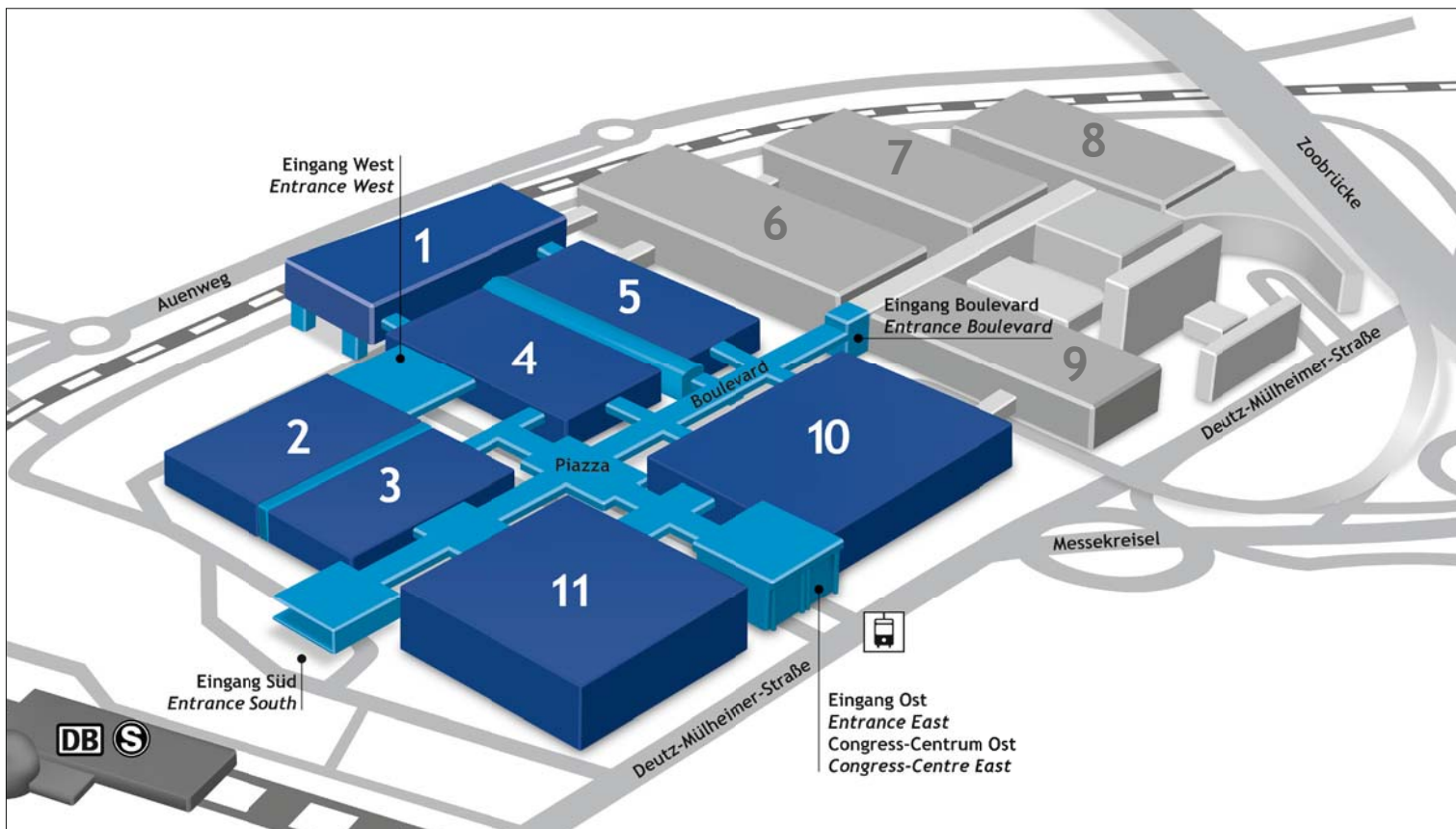
- ✓ Easy to use, fast and accurate
- ✓ Open system for your scanning needs
- ✓ Attractive price and no license fees



# today

FLOOR  
PLAN

40<sup>th</sup> International Dental Show • Cologne • 14–18 March 2023



von MENSCH zu MENSCH

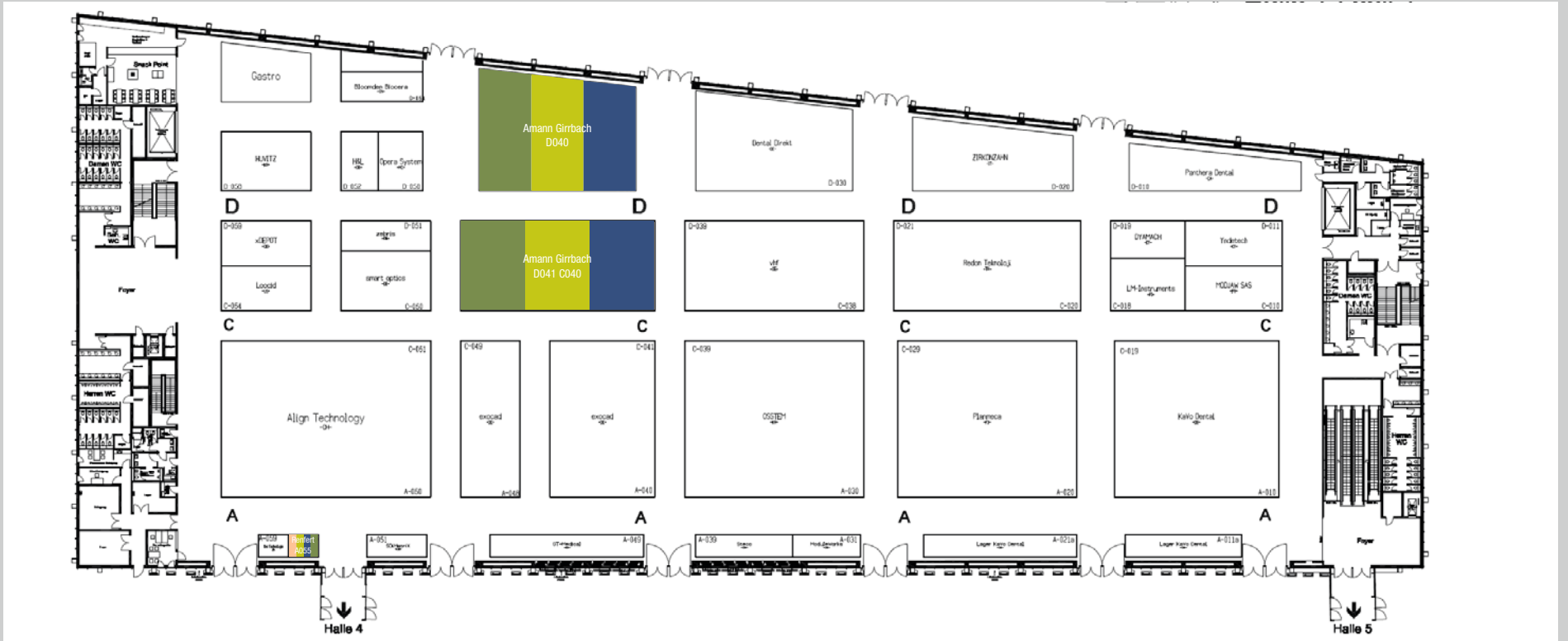


## Unsere Messehighlights für Sie!

- **Informieren** Sie sich beim exklusiven CEO-Talk
- **Orientieren** Sie sich mit Ihrem persönlichen Messe-Guide
- **Profitieren** Sie von den vdV Investitionsschecks



Halle 10.1  
Stand E080 - F089



**today** Trend Index

- Implantologie  
*Implantology*
- Veranstalter, Verbände & Depots  
*Event Organisers, Associations & Distributors*
- Kieferorthopädie  
*Orthodontics*
- Laserzahnheilkunde  
*Laser Dentistry*
- Praxiseinrichtung  
*Interior Design*
- Prävention/Parodontologie  
*Periodontics*
- Endodontie/Kons  
*Endodontics/Conservative Dentistry*
- Kosmetische Zahnheilkunde  
*Cosmetic Dentistry*
- Digitale Praxis  
*Digital Dentistry*
- Zahntechnik  
*Dental Lab*
- Praxishygiene  
*Hygiene and Sterilisation*
- CAD/CAM
- Praxismanagement  
*Practice Management*

AD

# A Global Leader in Total Dental Solution

Ein weltweit führender Anbieter von dentalen Gesamtlösungen

# OSSTEM<sup>®</sup> IMPLANT



**COME VISIT US!**  
**HALL 1, STAND: A030/C039**





# United for better dentistry

Gemeinsam mit Ihnen wollen wir die Zahnheilkunde voranbringen. Ihr Feedback sowie Gespräche mit Ihnen helfen uns, unsere Produkte und Services zu optimieren und Innovationen voranzutreiben, so dass Sie in Ihren Praxen und Laboren unter bestmöglichen Bedingungen arbeiten können. Für eine immer bessere Mundgesundheit Ihrer Patienten und Ihren Erfolg in der Praxis und im Labor – heute und morgen!  
Unsere Motivation lautet: United for better dentistry.

Wir freuen uns darauf, Sie persönlich zu treffen



[dentsplysirona.com/ids](https://dentsplysirona.com/ids)

**Besuchen Sie uns in Halle 11.2!**

 **Dentsply  
Sirona**

**today** Trend Index

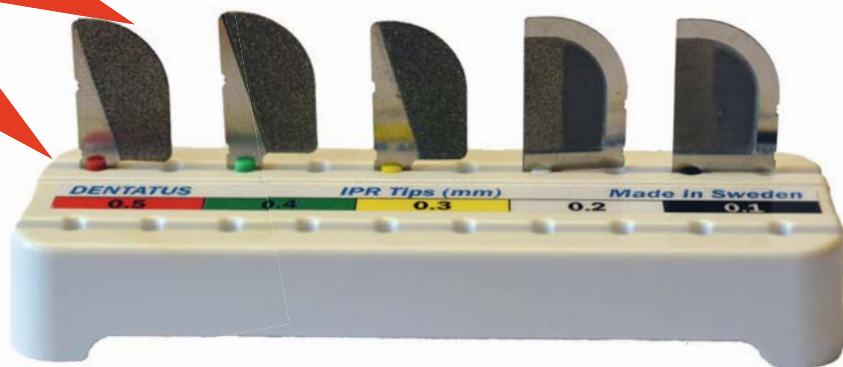
- Implantologie  
*Implantology*
- Prävention/Parodontologie  
*Periodontics*
- Veranstalter, Verbände & Depots  
*Event Organisers, Associations & Distributors*
- Endodontie/Kons  
*Endodontics/Conservative Dentistry*
- Kieferorthopädie  
*Orthodontics*
- Kosmetische Zahnheilkunde  
*Cosmetic Dentistry*
- Laserzahnheilkunde  
*Laser Dentistry*
- Digitale Praxis  
*Digital Dentistry*
- Praxisrichtung  
*Interior Design*
- Zahntechnik  
*Dental Lab*
- Praxishygiene  
*Hygiene and Sterilisation*
- Praxismanagement  
*Practice Management*
- CAD/CAM



# Calibrated success.

For aligner orthodontics.

## COMPLETE IPR SOLUTION



Profin IPR™ Tips (LTA-P/SK2) are calibrated to 0.1 - 0.5mm and used with Profin PDX

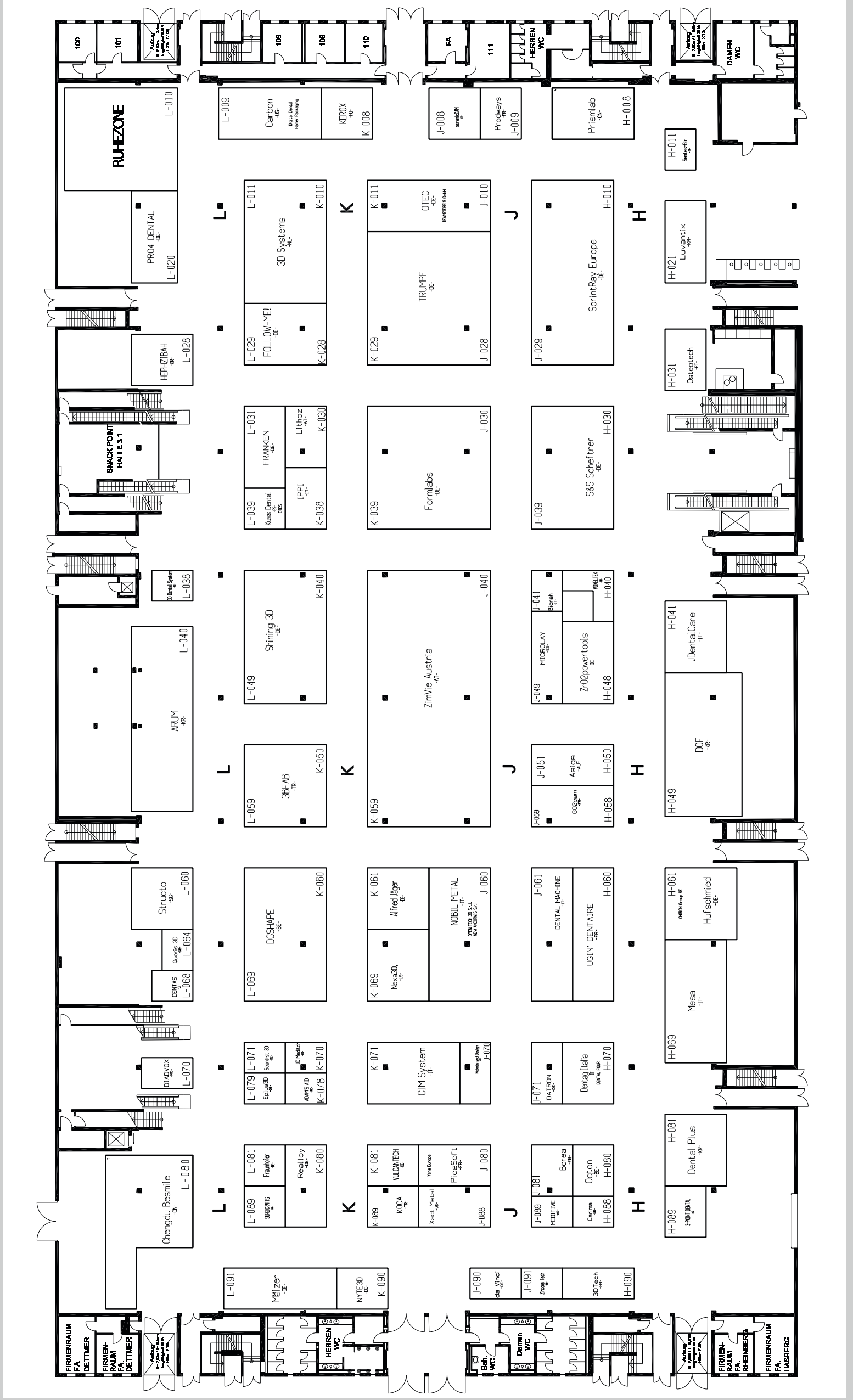
**VISIT US AT IDS:  
Hall 10.1, Booth G070-H071**

**PARTICIPATING DEALERS:**

CMD | DELWAG SA | DENTALL | LOSER & CO | MILTIADIS VITSAROPOULOS S.A.  
NORA | NORDENTA | Q DENT CO. | THREE A CO. LTD | TOKYO DENTAL | UNIDENT

**Dentatus AB**  
Sweden +46 8 546 509 00  
info@dentatus.se  
www.dentatus.com  
USA + 1 212 481 1010  
dentatus@dentatus.com







# IDS-Innovationen 2023

NEU



## Green 2 10x8

- Einsteiger-DVT/OPG mit bewährter Technik und Twin Sensoren
- Multi FOV 5x5, 8x5, 8x8, 10x8
- Weltspitze in Bildqualität, Homogenität und Geometrie
- 5,9 Sek. 3D Umlauf; 3,9 Sek. Scan CEPH (optional)


Stand L020/N029  
Halle 11.2

## byzz<sup>®</sup> Suite

Für Praxis & Labor

MADE  
IN  
GERMANY

- byzz<sup>®</sup> Nxt
- byzz<sup>®</sup> Convert
- byzz<sup>®</sup> Motion
- byzz<sup>®</sup> I
- byzz<sup>®</sup> CAD
- byzz<sup>®</sup> Ez3D-i
- byzz<sup>®</sup> Paro

orangedental  Ihr Dental-Software-Spezialist

orangedental chairside  
mit exocad

OFFICIAL  
RESELLER  
exocad

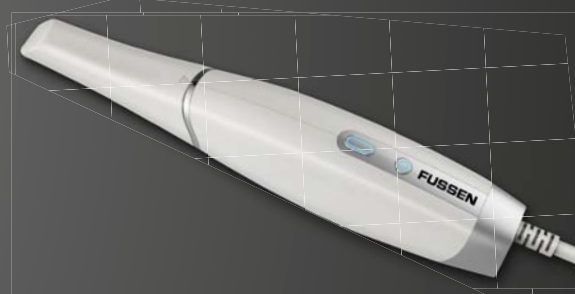
## exocad ChairsideCAD

mehr Automatisierung, vereinfachte  
Bedienung, optimiert für den Einsatz im  
Praxisalltag



## FUSSEN by orangedental

- Formschöner Intraoral 3D-Scanner
- Handlich und vielseitig
- Schnell und präzise



## EVO deskMill 5 / Pro

- 5-Achsen Dental-Tischfräsmaschine mit höchster Performance
- Megaschnell, superpräzise, maximalrobust bei besten Oberflächen
- Mit exocad ChairsideCAD und WORKNC Dental voll automatisierte Workflows



## PaX-i Plus

- Nachfolger des bewährten PaX-i HD<sup>+</sup> im neuen Design
- Höhere Auflösung mit 5 lp/mm
- Wahlweise mit 5 Layer Free Scroll
- Optional mit Fast Scan Ceph mit 1,9 Sek. Umlauf

**vatech** 2019  
WELTMARKTFÜHRER 2020  
Digitales, dentales 3D-Röntgen 2021  
2022





@ Booth **11.1 D021**

# Perfect Medical Instrument Co.

dental-perfect.com  
facebook:  
@perfectendo2009

Dental Perfect, also named Perfect Endo., is a dental instrument company providing outstanding dental clinic tools. Dental Perfect aims to be the most positive influential dental healthcare brand.



# ZR Touch

New Generation



## Multifunction Endo Motor

MODE		FUNCTION
<b>M1-M5</b>	Continuous rotation	Rotate in one direction ( clockwise / counterclockwise ) Speed range: 150-1000 rpm, step value 50rpm Torque range: 0.6-5.0 N·cm, step value 0.1 N·cm Speed range : 300rpm
<b>M6-M8</b>	Reciprocating rotation	Angle range: 150°forward, 30° reversal 170° forward, 50° reversal 50° forward, 170° reversal

Implantologie  
Implantology

Veranstalter, Verbände & Depots  
Event Organisers, Associations & Distributors

Kieferorthopädie  
Orthodontics

Laserzahnheilkunde  
Laser Dentistry

Praxisinrichtung  
Interior Design

Praxishygiene  
Hygiene and Sterilisation

CAD/CAM

Prävention/Parodontologie  
Periodontics

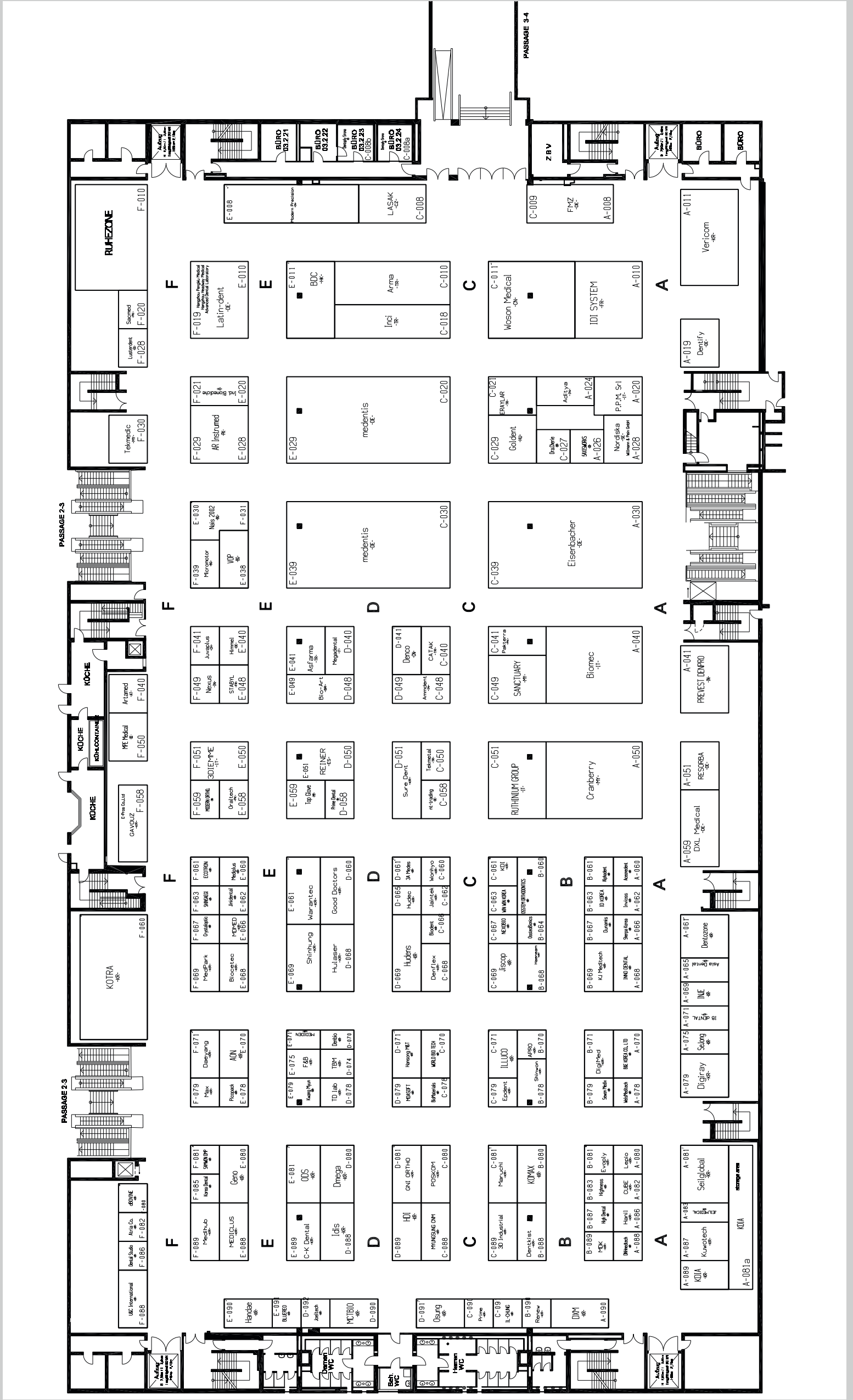
Endodontie/Kons  
Endodontics/Conservative Dentistry

Kosmetische Zahnheilkunde  
Cosmetic Dentistry

Digitale Praxis  
Digital Dentistry

Zahntechnik  
Dental Lab

Praxismanagement  
Practice Management



**medentis**  
medical

PRESENTS

# ICX-DIAMOND<sup>®</sup>

THE NEW DENTAL-IMPLANT BY MEDENTIS MEDICAL.

**LIQUID**

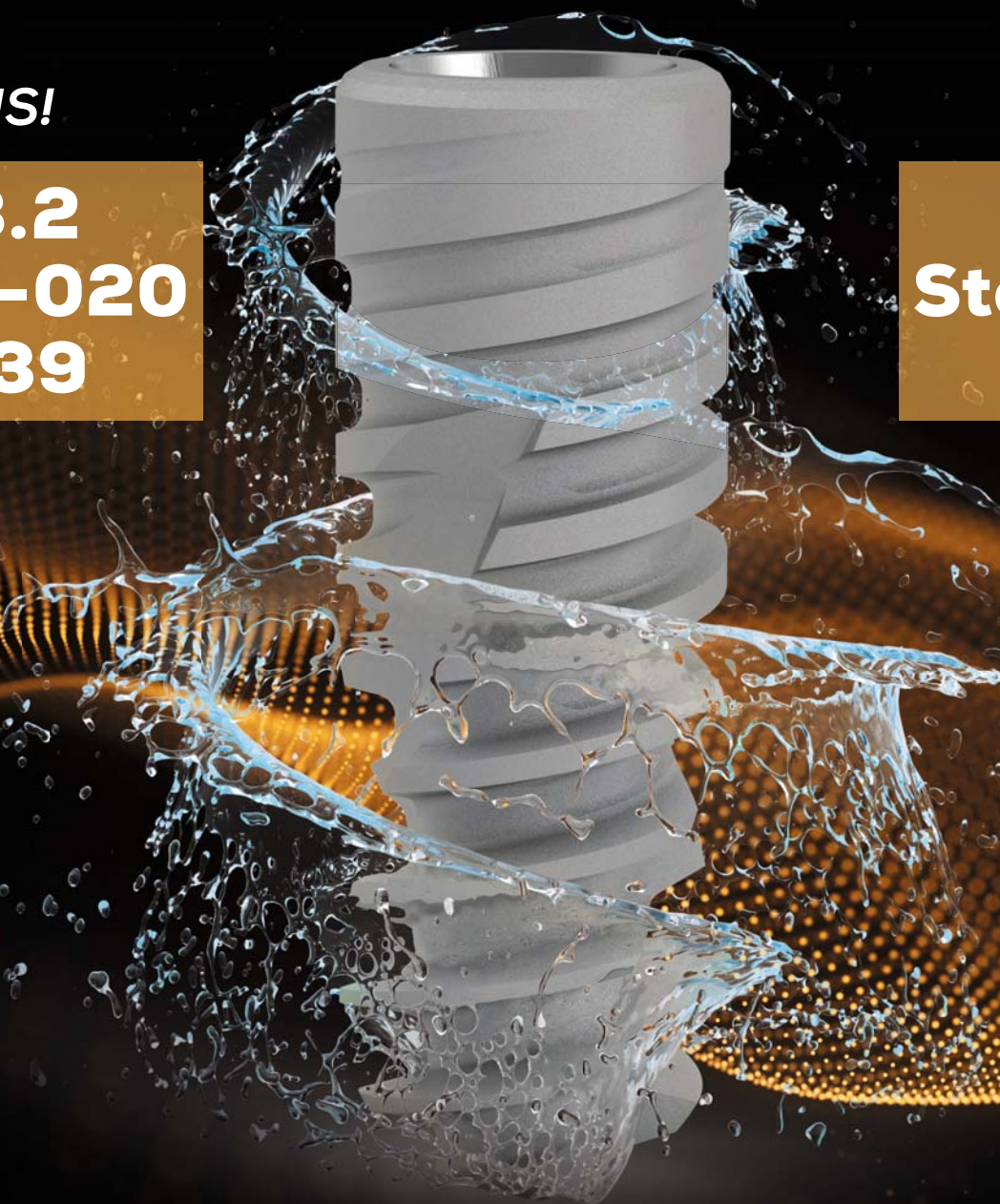


*VISIT US!*

**Hall 3.2  
Stand: C-020  
- E-039**

*VISIT US!*

**Hall 3.2  
Stand: C-020  
- E-039**



THE NEW ICX-GOLD-STANDARD  
FROM MEDENTIS MEDICAL.

- Implantologie  
Implantology
- Prävention/Parodontologie  
Periodontics
- Veranstalter, Verbände & Depots  
Event Organisers, Associations & Distributors
- Endodontier/Kons  
Endodontics/Conservative Dentistry
- Kieferorthopädie  
Orthodontics
- Laserzahnheilkunde  
Laser Dentistry
- Kosmetische Zahnheilkunde  
Cosmetic Dentistry
- Digitale Praxis  
Digital Dentistry
- Zahntechnik  
Dental Lab
- Praxisrichtung  
Interior Design
- Praxishygiene  
Hygiene and Sterilisation
- CAD/CAM
- Praxismanagement  
Practice Management



# PRACTICE GREEN



**Protecting the Planet  
for a Healthier Future**



Through Practice Green, Henry Schein aims to encourage communities to become more eco-friendly by providing solutions to support, educate, and enhance the environmental sustainability efforts of our customers.



**Please scan me**  
for more information.

 **HENRY SCHEIN**<sup>®</sup>  
SOLUTIONS FOR HEALTH CARE PROFESSIONALS

**Rely on Us**<sup>™</sup>



**today** Trend Index

- Implantologie  
*Implantology*
- Veranstalter, Verbände & Depots  
*Event Organisers, Associations & Distributors*
- Kieferorthopädie  
*Orthodontics*
- Laserzahnheilkunde  
*Laser Dentistry*
- Praxiseinrichtung  
*Interior Design*
- Prävention/Parodontologie  
*Periodontics*
- Endodontie/Kons  
*Endodontics/Conservative Dentistry*
- Kosmetische Zahnheilkunde  
*Cosmetic Dentistry*
- Digitale Praxis  
*Digital Dentistry*
- Zahntechnik  
*Dental Lab*
- Praxishygiene  
*Hygiene and Sterilisation*
- CAD/CAM
- Praxismanagement  
*Practice Management*

AD

**rapidshape**

rapidshape.de

# Shape Your Lab and Grow

YOUR WAY TO MORE PRODUCTIVITY THROUGH AUTOMATION

**3D PRINTERS FOR DENTAL APPLICATIONS**

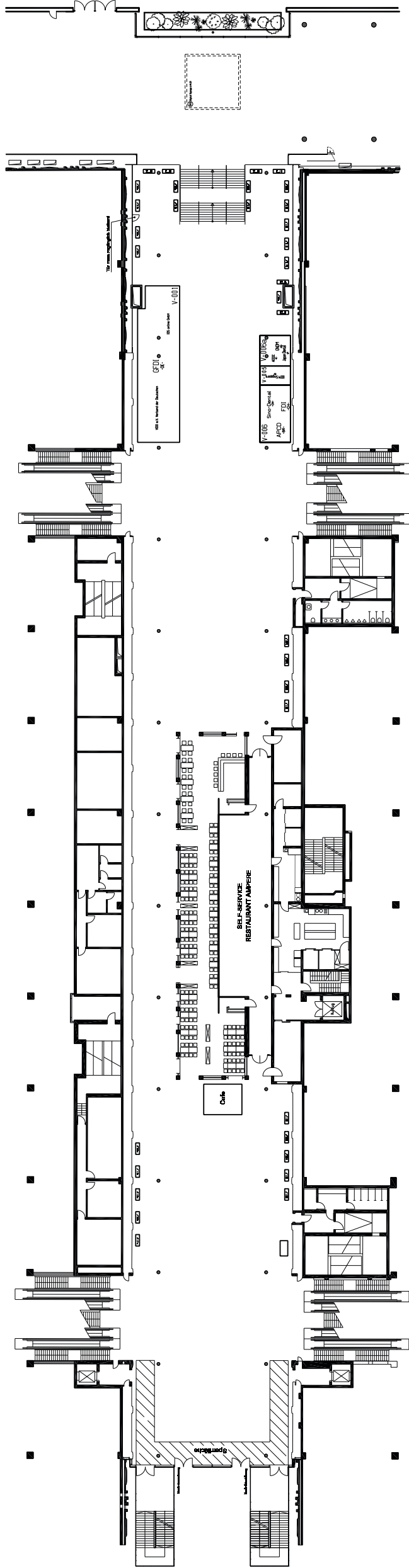
Get to know our **D20+, D30+, D50+**, our **RS wash/cure** and the new **RS cure XL**



**GET IN TOUCH WITH US**  
Hall 4.2, Booth K-089

**NEW**





today Trend Index

Implantologie  
Implantology

Prävention/Parodontologie  
Periodontics

Veranstalter, Verbände & Depots  
Event Organisers, Associations & Distributors

Endodontie/Kons  
Endodontics/Conservative Dentistry

Kieferorthopädie  
Orthodontics

Kosmetische Zahnheilkunde  
Cosmetic Dentistry

Laserzahnheilkunde  
Laser Dentistry

Digitale Praxis  
Digital Dentistry

Praxiseinrichtung  
Interior Design

Zahntechnik  
Dental Lab

Praxishygiene  
Hygiene and Sterilisation

Praxismanagement  
Practice Management

CAD/CAM

Visit Us At DenMat Booth K060 in Hall 4.2 American Pavilion



HDMax 2.5x

HDMax 3.0x

HDMax 3.5x

 PeriOptix®  
HDMax®

## Our Products Shine

DenMat has helped dentists world wide focus on their dentistry for over 40 years.



  
Power of light  
Portable Diode Surgical Laser



  
Perio · Restorative · Ortho  
Handheld Diode Surgical Laser

 MADE IN THE USA



[www.denmat.com](http://www.denmat.com)

Visit Us At DenMat Booth K060 in Hall 4.2 American Pavilion



## Outstanding Products, Outstanding Results

For over 40 years, DenMat has been a trusted source for superior restorative materials with award-winning products and solutions available globally.



[www.denmat.com](http://www.denmat.com)





# ConsyBox

www.consybox.com

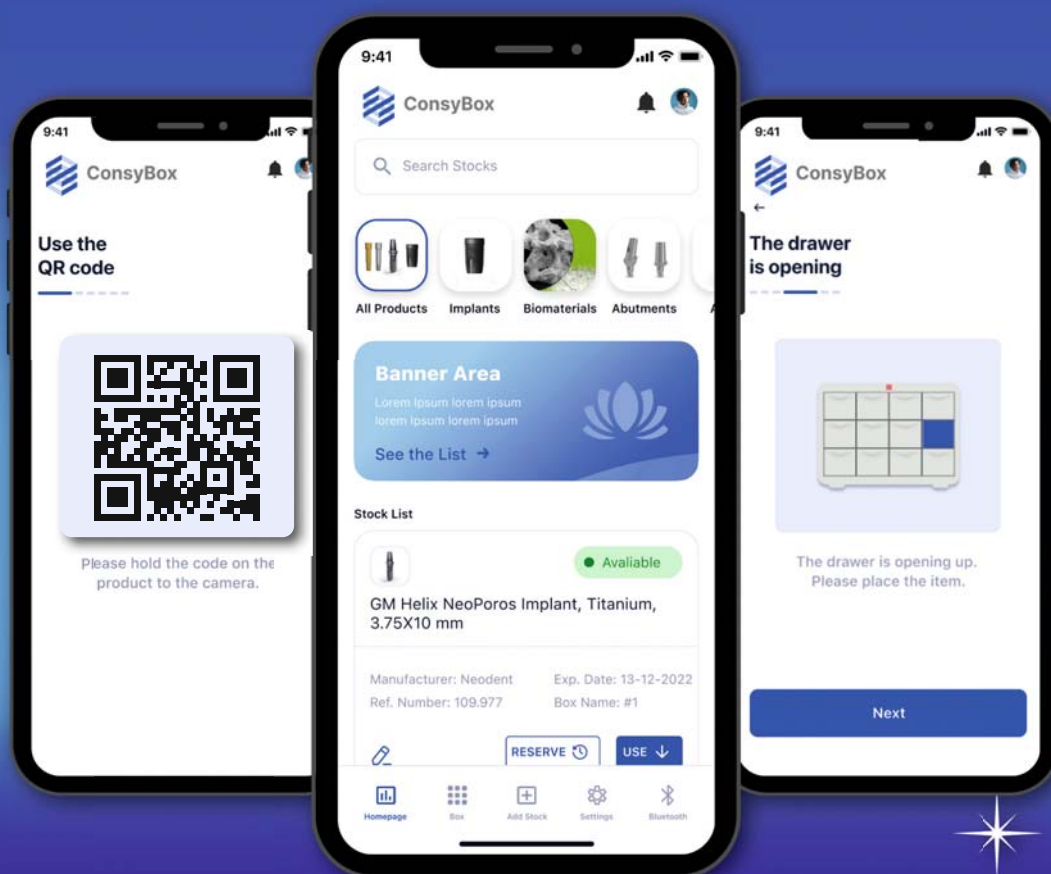


A smart box for the convenience of distributors and clinics

## No paperwork, all digital!

The ConsyBox is developed for management of the implant stock in the clinics. It is a fast and precise tool for ordering goods and digital communication between distributors and clinics!

It is fully in line with the latest regulations of the European Medical Devices Regulation for storage and traceability.



Choose the product



Reserve it for treatment



You will be re-stocked automatically



Fill the stock



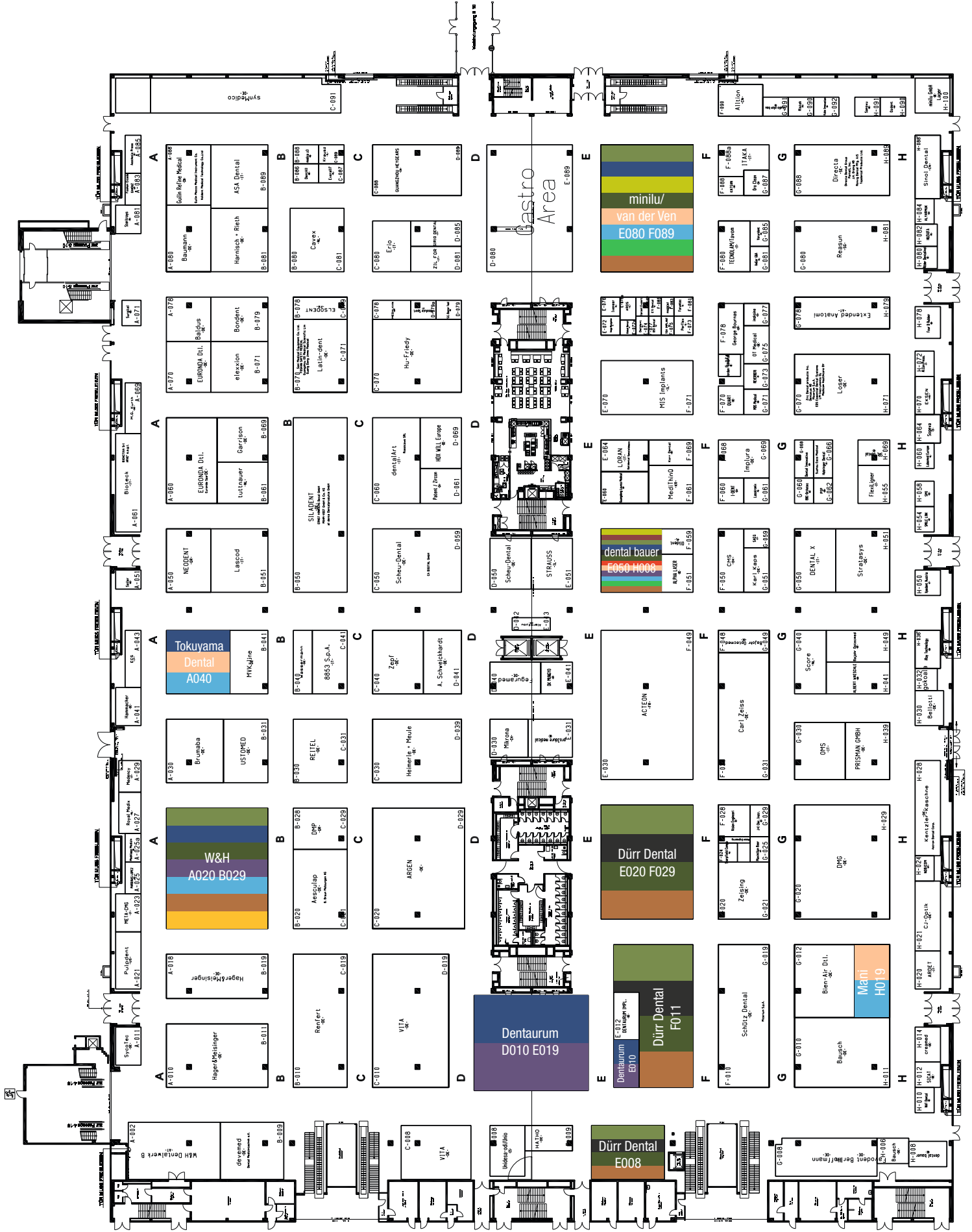
You are ready again for the next treatment

## The ConsyBox is smart

Full automatization of your consignment and instant control of the product taken from the box.



- Implantologie
- Prävention/Parodontologie
- Endodontie/Kons
- Veranstanter, Verbände & Depots
- Kieferorthopädie
- Laserzahnheilkunde
- Komärische Zahnheilkunde
- Endodontie/Kons
- Praxistechnik
- Zahntechnik
- Praxisrichtung
- Hygiene and Sterilisation
- Zahntechnik
- Praxismanagement
- Zahntechnik
- CAD/CAM



# Innovativ unterwegs mit minilu

Besuch mich in meinem Traumhaus auf der IDS

minilu.de | *vanLaack*  
MEDICAL-FASHION

**Fashionshow**

täglich um 12 und 15 Uhr

**IDS  
2023**



Vom 14. bis 18. März 2023 erwarten dich am minilu Messestand folgende Highlights:

- ✓ Das Beste aus zwei Welten: minilu und van der Ven Tür an Tür auf der IDS
- ✓ Elegant und funktional: 2x täglich Modenschau mit van Laack Medical-Fashion hosted by Boris Entrup
- ✓ Nachhaltigkeit hautnah: Vorträge und innovative Produkte mit der Initiative „Die Grüne Praxis“

**Halle 10.1  
Stand E080 – F089**

**minilu.de**  
... macht mini Preise





the missing link the digital facebook for IOS



the final step the printed model mounting system



AD



today Trend Index

- Implantologie  
Implantology
- Veranstalter, Verbände & Depots  
Event Organisers, Associations & Distributors
- Kieferorthopädie  
Orthodontics
- Laserzahnheilkunde  
Laser Dentistry
- Prävention/Parodontologie  
Periodontics
- Endodontie/Kons  
Endodontics/Conservative Dentistry
- Kosmetische Zahnheilkunde  
Cosmetic Dentistry
- Praxiseinrichtung  
Interior Design
- Praxishygiene  
Hygiene and Sterilisation
- CAD/CAM
- Digitale Praxis  
Digital Dentistry
- Zahntechnik  
Dental Lab
- Praxismangement  
Practice Management



# NAVIDENT

Precise. Efficient. Versatile

Dynamic Navigation for Dental Surgery



Expand your surgical expertise

Less trauma for your patients

Save precious time

## Guided implantology



Conduct high-precision implant treatments quickly and confidently. Reliably detect important anatomical structures.

## Guided endodontics



Locate root canals and other fine anatomical structures.

## Guided bone surgery

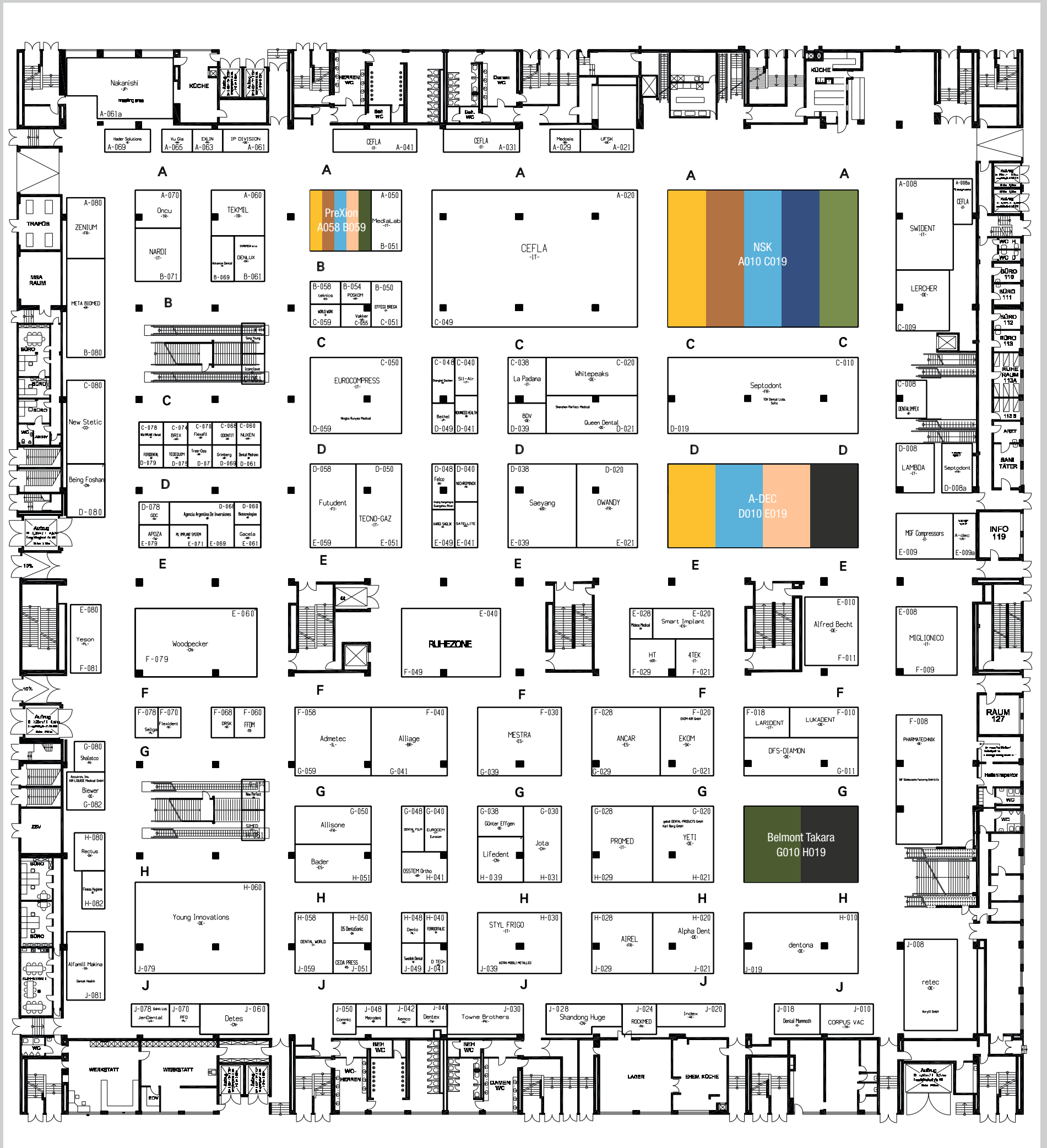


High-precision navigation of your piezotome enables accurate assessment and predictable outcomes.

Call +32.475.75.52.26 or email [info@claronav.com](mailto:info@claronav.com)

Meet us at Hall 10.2 | Stand O 053





**today** Trend Index

- Implantologie  
Implantology
  - Prävention/Parodontologie  
Periodontics
  - Praxishygiene  
Hygiene and Sterilisation
  - Praxismanagement  
Practice Management
- Veranstalter, Verbände & Depots  
Event Organisers, Associations & Distributors
  - Endodontie/Kons  
Endodontics/Conservative Dentistry
  - CAD/CAM
- Kieferorthopädie  
Orthodontics
  - Kosmetische Zahnheilkunde  
Cosmetic Dentistry
- Laserzahnheilkunde  
Laser Dentistry
  - Digitale Praxis  
Digital Dentistry
- Praxiseinrichtung  
Interior Design
  - Zahntechnik  
Dental Lab

Come see us at IDS for a preview—and connect to what's next.

# INNOVATION NEVER SLEEPS

Hall 11.1 | Stand D010/E019





**today** Trend Index

- |  |  |   |                                       |                                      |
|--|--|---|---------------------------------------|--------------------------------------|
| Implantologie<br>Implantology              | Veranstalter, Verbände & Depots<br>Event Organisers, Associations & Distributors | Kieferorthopädie<br>Orthodontics                | Laserzahnheilkunde<br>Laser Dentistry | Praxiseinrichtung<br>Interior Design |
| Prävention/Parodontologie<br>Periodontics  | Endodontie/Kons<br>Endodontics/Conservative Dentistry                            | Kosmetische Zahnheilkunde<br>Cosmetic Dentistry | Digitale Praxis<br>Digital Dentistry  | Zahntechnik<br>Dental Lab            |
| Praxishygiene<br>Hygiene and Sterilisation | CAD/CAM  |   |                                       |                                      |
| Praxismanagement<br>Practice Management    |  |   |                                       |                                      |

# Welcome to GC

# Willkommen bei GC



Scan the QR  
to see what's  
going on at  
the booth!



Hall 11.2 | Booth N010-O039



Besuchen Sie uns in Halle 11.3 an Stand G010-H029



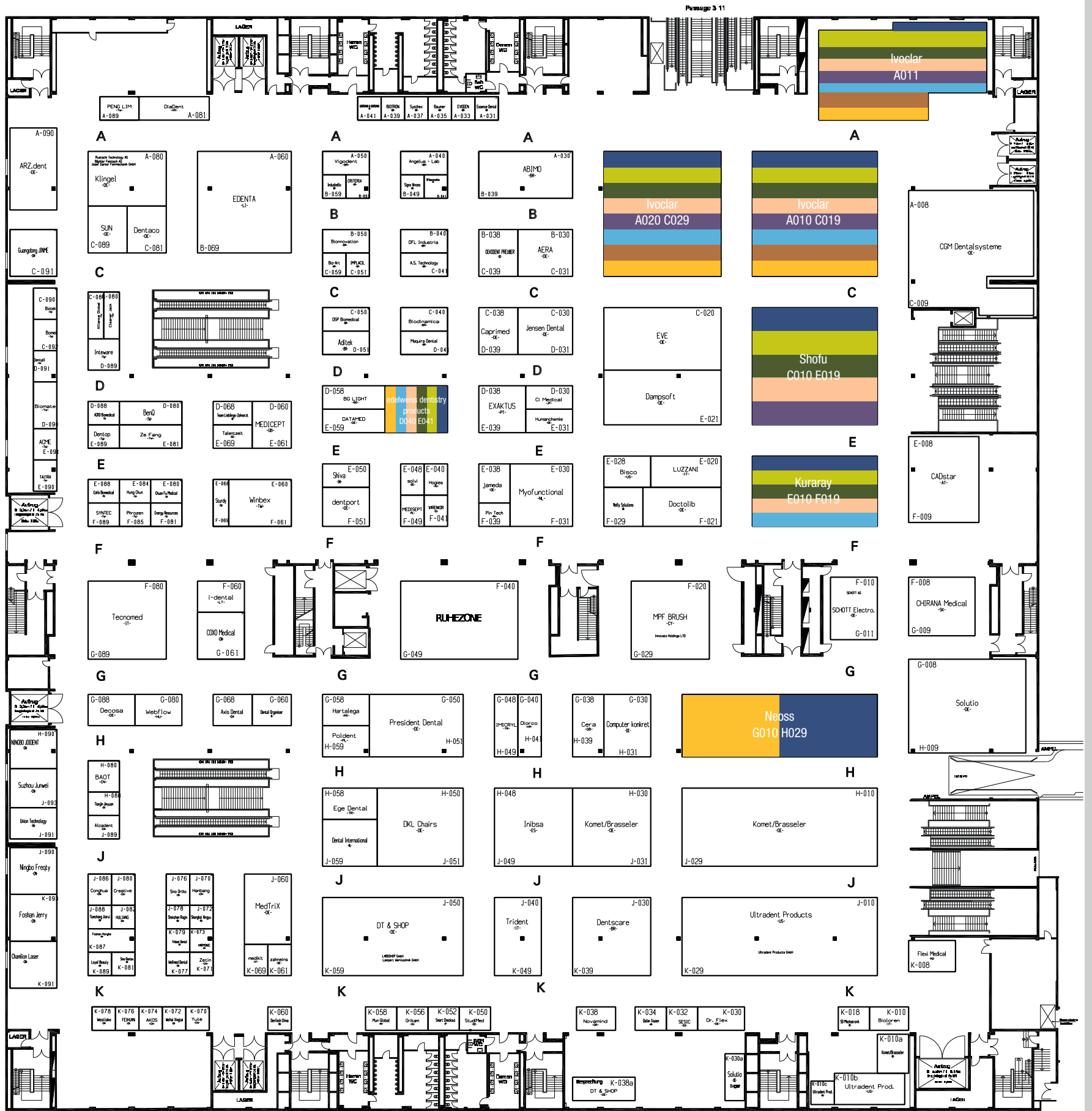
Ein einfacher digitaler Workflow in Ihrer täglichen Praxis spart Ihnen Zeit, erhöht die Vorhersagbarkeit und hilft Ihnen, die besten funktionellen und ästhetischen Ergebnisse für Ihre Patienten zu erzielen.

Möchten Sie unkompliziert Zeit und Geld sparen?  
Neoss® Digitaler Workflow



today Trend Index

- Implantologie  
Implantology
- Veranstalter, Verbände & Depots  
Event Organisers, Associations & Distributors
- Kieferorthopädie  
Orthodontics
- Laserzahnheilkunde  
Laser Dentistry
- Praxiseinrichtung  
Interior Design
- Prävention/Parodontologie  
Periodontics
- Endodontie/Kons  
Endodontics/Conservative Dentistry
- Kosmetische Zahnheilkunde  
Cosmetic Dentistry
- Digitale Praxis  
Digital Dentistry
- Zahntechnik  
Dental Lab
- Praxishygiene  
Hygiene and Sterilisation
- CAD/CAM
- Praxismanagement  
Practice Management



AD



Oral-B is on a mission to make oral care more inclusive, accessible, and positive for everyone.

Did you know?

Approximately **1/3 of people (166 million)** in Europe\*\* are affected by a disability in some way

32%



28%



36%



36%



**1/3 (34%)** of those experienced gum issues in the past year

Oral-B, a leading innovator in oral health and #1 recommended brand by dentists worldwide, has commissioned a European-wide study\* to better understand the hidden impact of disability on oral health.

The study reveals that in UK, France, Germany and Italy:

Almost **HALF of people (47%) with disabilities** have not been taught how to look after their oral health\*

23%

(over a fifth) of disabled Europeans feel demotivated when it comes to maintaining their oral health\*

2x

Almost **2x** more people with disabilities said they **find oral care painful** vs those without a disability\*

35%

of disabled people feel **anxious or frustrated** when it comes to visiting the dentist\*

**1 in 5 (20%)** of those with severe disabilities find that brushing all of their teeth physically challenging\*

Our Ambition

Oral-B believes **everyone deserves an equitable oral care experience** – whether that's at **the dentist**, through **easily accessible** and **personalised tips and tricks** or with the products that are **used at home** to maintain oral health.



For more information

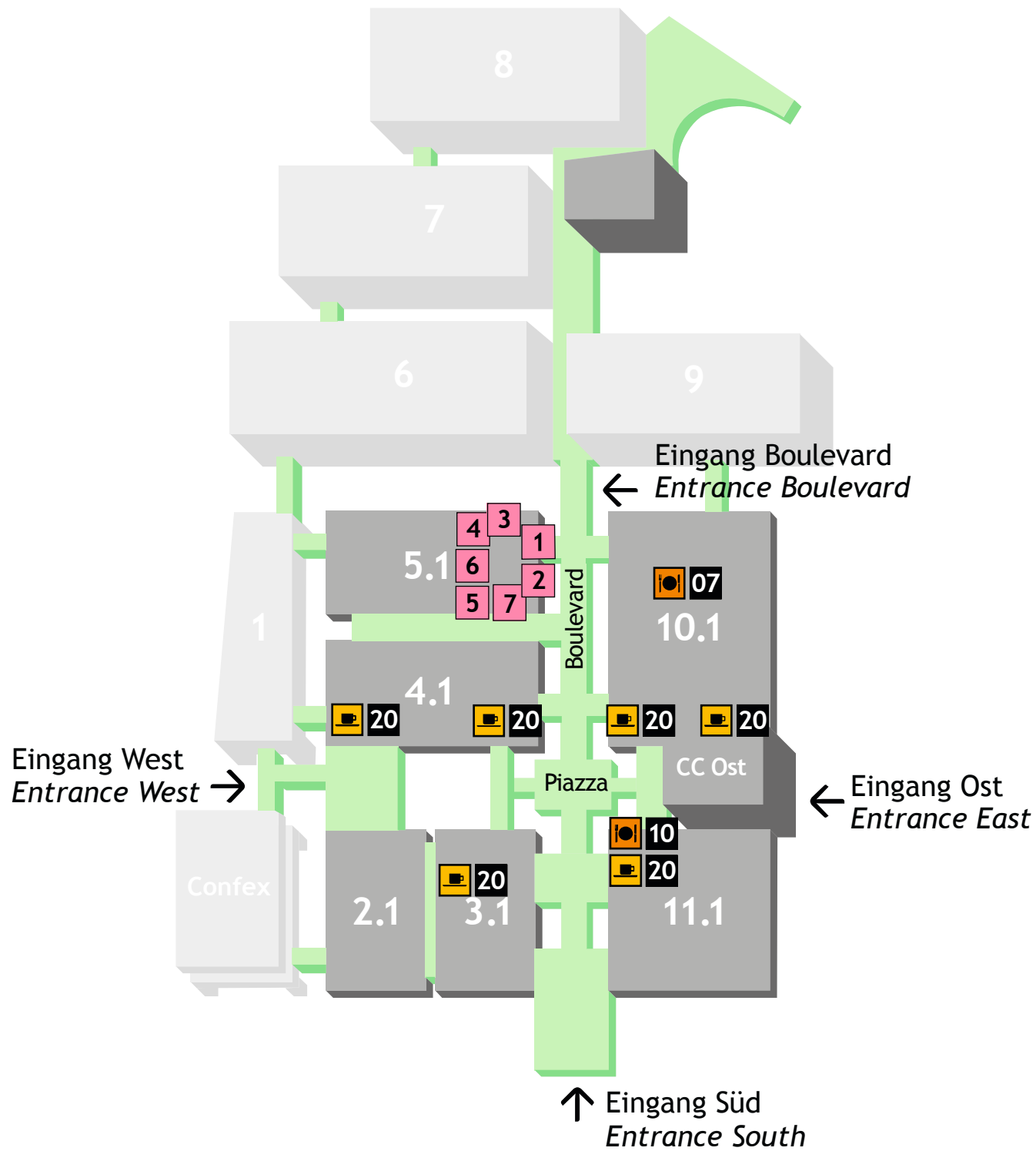
\*About the Research

The Oral Health & Disability European Study – UK, France, Germany and Italy, was conducted by Reputation Leaders. The studies were conducted between 2021–2022 in Germany (n=1034), France (n=1009), UK (n=2029) and Italy (n=1002).

In each country the online survey sample was recruited and reported to be representative of the total adult population by age, gender and region. The margin of error of a sample of 5000 adults is +/- 1.4% at a 95% confidence level for the 4 leading economies.

At a country level, the margin of error of the sample relative to the total adult population was UK n=2000 (+/- 2.2%), Germany, France and Italy, n=1000 (+/- 3.1%)

+Assumes total EU and UK population, 2022



14.-18.03.2023

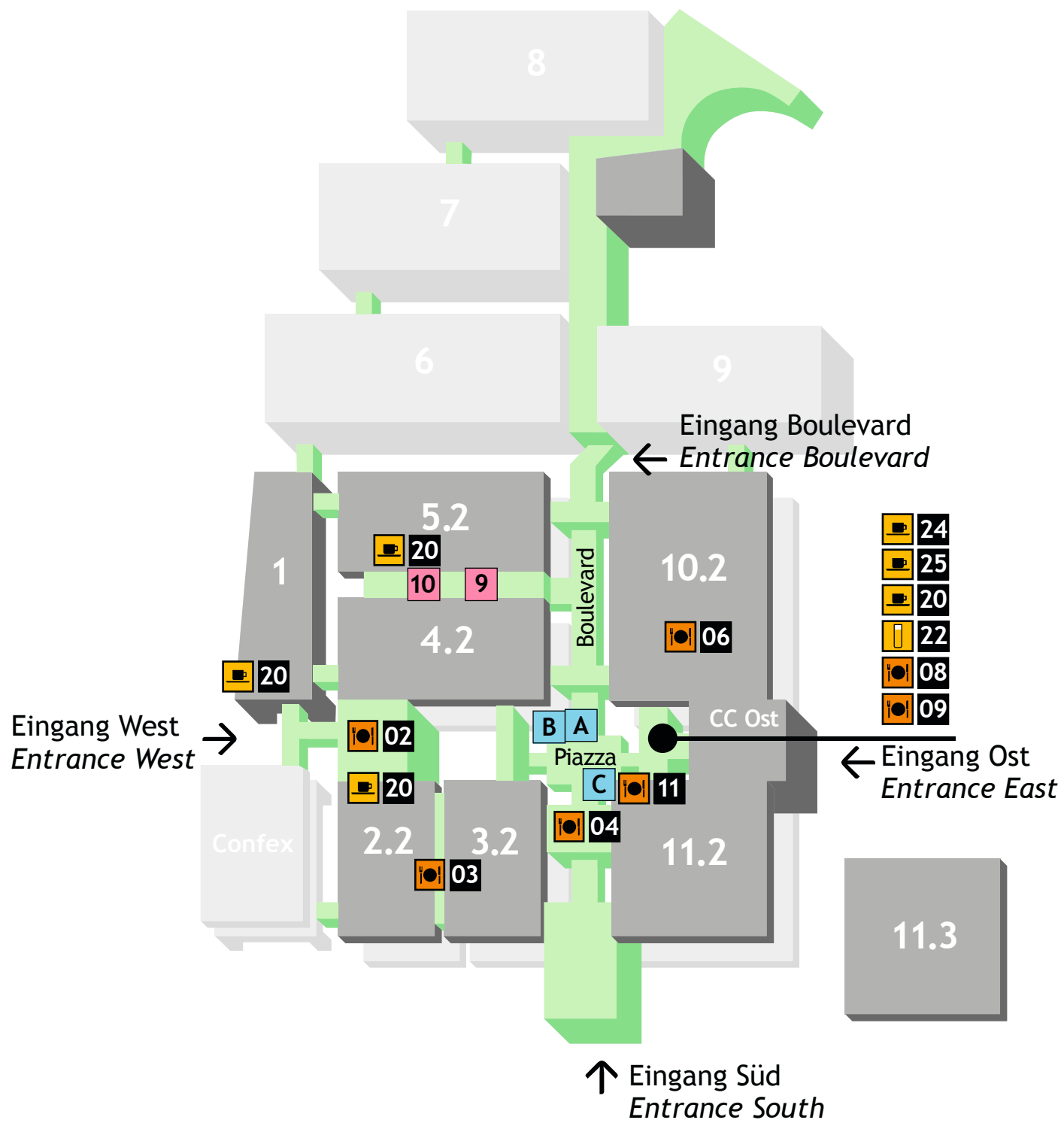
**Self Service Restaurants:**

02	Edison	11:00 - 18:00 Uhr · 11:00 a.m. to 06:00 p.m.
03	Einstein	11:00 - 18:00 Uhr · 11:00 a.m. to 06:00 p.m.
04	Galilei (Asia Wok)	09:00 - 18:00 Uhr · 09:00 a.m. to 06:00 p.m.
06	Newton	09:00 - 18:00 Uhr · 09:00 a.m. to 06:00 p.m.
07	Pascal	11:00 - 16:00 Uhr · 11:00 a.m. to 04:00 p.m.
08	Pizzabar	11:00 - 18:00 Uhr · 11:00 a.m. to 06:00 p.m.
09	Pastabar	11:00 - 16:00 Uhr · 11:00 a.m. to 04:00 p.m.
10	Sushi & Wine	11:00 - 18:00 Uhr · 11:00 a.m. to 06:00 p.m.
11	Vegan	11:00 - 16:00 Uhr · 11:00 a.m. to 04:00 p.m.

**Snack Points & Bars:**

20	Snack Point	09:00 - 18:00 Uhr · 09:00 a.m. to 06:00 p.m.
20	Snack Point (Passage 10/11)	11:00 - 16:00 Uhr · 11:00 a.m. to 04:00 p.m.
20	Snack Point (Halle 4.1 Südwest)	11:00 - 18:00 Uhr · 11:00 a.m. to 06:00 p.m.
20	Snack Point Hot Dog (Halle 5.2 Südwest)	10:00 - 18:00 Uhr · 10:00 a.m. to 06:00 p.m.
20	Snack Point Hot Dog (Halle 10.1 Südwest)	11:00 - 18:00 Uhr · 11:00 a.m. to 06:00 p.m.
22	Kölschbar (18.03.2023 geschlossen/closed)	12:00 - 19:00 Uhr · 12:00 a.m. to 07:00 p.m.
24	Coffee meets Juice	09:00 - 18:00 Uhr · 09:00 a.m. to 06:00 p.m.
25	Café Bar (18.03.2023 geschlossen/closed)	09:00 - 16:00 Uhr · 09:00 a.m. to 04:00 p.m.





14.-18.03.2023

**Food Court Halle 5.1:**

<b>1</b>	Brennwerk	11:00 - 18:00 Uhr · 11:00 a.m. to 06:00 p.m.
<b>2</b>	Buns & Suns	11:00 - 18:00 Uhr · 11:00 a.m. to 06:00 p.m.
<b>3</b>	Falafel	11:00 - 18:00 Uhr · 11:00 a.m. to 06:00 p.m.
<b>4</b>	Indian Streed Food	11:00 - 18:00 Uhr · 11:00 a.m. to 06:00 p.m.
<b>5</b>	Crépe	11:00 - 18:00 Uhr · 11:00 a.m. to 06:00 p.m.
<b>6</b>	Espresso Flitzer	09:00 - 18:00 Uhr · 09:00 a.m. to 06:00 p.m.
<b>7</b>	Flammkuchen	11:00 - 18:00 Uhr · 11:00 a.m. to 06:00 p.m.

**Passage 4-5:**

<b>9</b>	Brezel Bob (im Ampère)	09:00 - 18:00 Uhr · 09:00 a.m. to 06:00 p.m.
<b>10</b>	Asia & Sushi (Westseite im Ampère)	11:00 - 18:00 Uhr · 11:00 a.m. to 06:00 p.m.

**Outdoor:**

<b>A</b>	Hot Dog (Piazza)	11:00 - 17:00 Uhr · 11:00 a.m. to 05:00 p.m.
<b>B</b>	Café Bar (Piazza)	10:00 - 16:00 Uhr · 10:00 a.m. to 04:00 p.m.*
<b>C</b>	BBQ Garden (Piazza)	11:00 - 16:00 Uhr · 11:00 a.m. to 04:00 p.m.*

\*je nach Wetterlage

# The Perfect Fit

Production-grade DLP 3D printing has arrived.  
Featuring premium biocompatible and model materials.  
Made to fit your digital dental workflow.

Experience  
the Einstein  
3D Printer Series

IDS 14<sup>th</sup> – 18<sup>th</sup> March 2023  
Hall 4.1 | Booth D070

