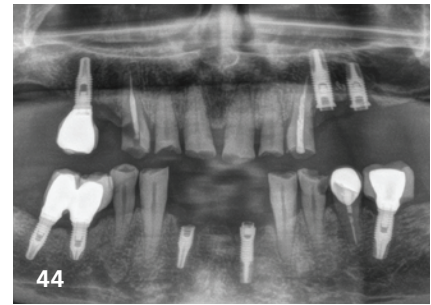




This was IDS 2023



International Implantology Congress in Nepal



Treatment of a patient with severe bruxism, loss of vertical dimension, tooth wear and fracture of dental implants

EDI News

- 08 Seminar offers**
BDIZ EDI will provide online lectures in 2023
- 10 “Implantology step by step”: Start of the training series**
BDIZ EDI offers webinar series on implantology
- 12 A proud anniversary: 25th Curriculum Implantology**
Register now for Cologne—Curriculum South starts in 2024
- 14 A cornucopia of small innovations**
This was IDS 2023
- 18 Diagnosis the digital way**
Interview with Dr Tina Mandel about her dental app
- 20 President-elect of the Academy of Osseointegration**
Meet Prof. Jörg Neugebauer
- 22 We want YOU!**
BDIZ EDI and its multifaceted work
- 24 A versatile mixture**
16th Europe Symposium and Giornate Veronesi 2023
- 26 BDIZ EDI on social media**
Instagram, Facebook, Twitter, YouTube
- 28 Oral implantology in the Himalayas**
International Implantology Congress in Nepal
- 30 Concepts of prosthetic care**
32nd Expert Symposium on Regenerative Procedures in Dentistry
- 32 Recommendations for national governments**
Position on dental workforce
- 34 Europe Ticker**
- 36 A leading authority on expert opinions has left us**
Obituary: Dr Hans-Hermann Liepe
- 37 Did you ever know...**
Facts about the BDIZ EDI
- 38 Not every breach of the GDPR automatically entitles to compensation**
Judgement of the European Court of Justice in Case C-300/21
- 40 “Regulation is legally possible and urgently needed”**
Investor-owned medical care centres (MCCs)
- 42 Qualification for experienced implantologists**
Certification as an EDA Expert in Implantology

Case Studies

- 44 Treatment of a patient with severe bruxism, loss of vertical dimension, tooth wear and fracture of dental implants**
 - 50 Augmentation and implantation in a two-stage approach**
 - 54 Implant and alloplast synergy in a complex anterior maxillary case**
 - 60 Soft-tissue thickening—natural revascularisation with NovoMatrix®**
 - 62 Compact know-how**
Report on the 18th Expert Symposium of BDIZ EDI
- ## Business & Events
- 66 Cutting edge science and innovation**
Dentsply Sirona Implant Solutions World Summit 2023
 - 68 Osteology Symposium 2023: New approaches to immediate restoration and soft-tissue management**
BioHorizons Camlog
 - 69 A global academic symposium uniting dental professionals**
OSSTEM World Meeting 2023
 - 70 Digital dentistry—the sky is the limit**
 - 72 More manufacturers prove the production quality of their implant systems**
CleanImplant “Trusted Quality” seal
 - 74 Whither ceramic implantology?**
New trends in oral implantology
 - 76 Empowering dentists: comprehensive educational programmes in Europe**
OSSTEM IMPLANT Scientific Community

News and Views

- 03 Editorial**
- 06 Partner Organizations of BDIZ EDI**
- 07 Scientific Board/Imprint**
- 78 Product Reports/Product Studies/Product News**
- 82 Calendar of Events/Publisher’s Corner**



NovoMatrix™ Reconstructive Tissue Matrix – the next generation material

NovoMatrix™ Reconstructive Tissue Matrix is an acellular dermal matrix derived from porcine tissue intended for soft tissue applications. The proprietary LifeCell™ tissue processing is designed to maintain the biomechanical integrity of the tissue, which is critical to support tissue regeneration.

Indications

- Localized gingival augmentation to increase keratinized tissue (KT) around teeth and implants
- Alveolar ridge reconstruction for prosthetic treatment
- Guided tissue regeneration procedures in recession defects for root coverage

Product features

- Consistent thickness (1 mm)
- Pre-hydrated
- Controlled source

www.biohorizonscamlog.com

Before use, physicians should review all risk information, which can be found in the Instructions for Use attached to the packaging of each NovoMatrix™ Reconstructive Tissue Matrix graft. NovoMatrix™ is a trademark of LifeCell™ Corporation, an Allergan affiliate. ©BioHorizons. All rights reserved. Not all products are available in all countries.