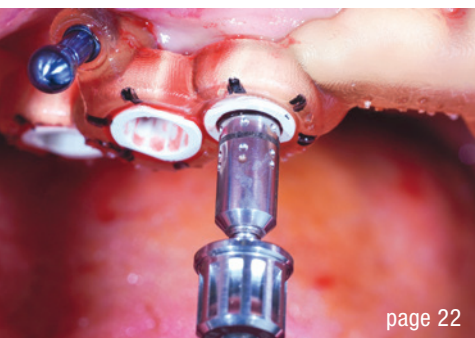


page 6



page 22



page 41

Cover image courtesy of Neodent Brasil, [www.neodent.com](http://www.neodent.com)



## editorial

Team spirit in implantology 03  
Dr Rolf Vollmer

## case report

Immediate aesthetic single-unit anterior restoration using a Grand Morse implant 06  
Dr Luis Honorato Schmied

The transparent gingiva project 12

Drs Ariel Savion, Serge Szmukler-Moncler & Roni Kolerman

Immediate loading of a final fixed prosthesis in the edentulous maxilla on Straumann BLX implants 22

Drs Kerem Kilic, PhD & Erdem Kilic, PhD

## research

Immune sustainability on titanium implants? 30

Drs Johann Lechner, Fabian Schick & Florian Notter

## industry

“We fight dirty” 34

Dr Dirk U. Duddeck

## interview

Digital dentistry—the sky is the limit 36

Dr Shivi Gupta

## news

manufacturer news 38

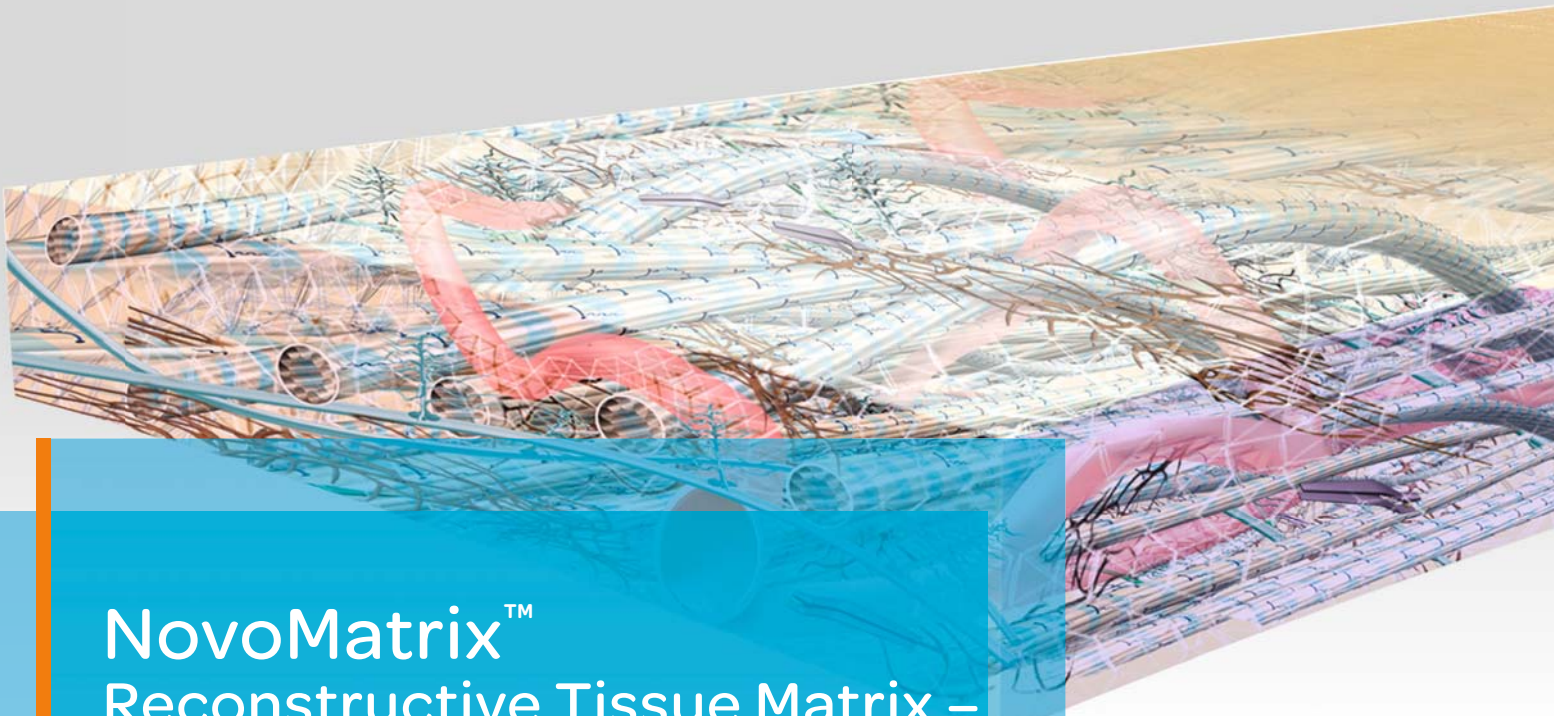
## events

IADR Innovation in Implantology Research prize awarded to Dr Alberto Monje 40

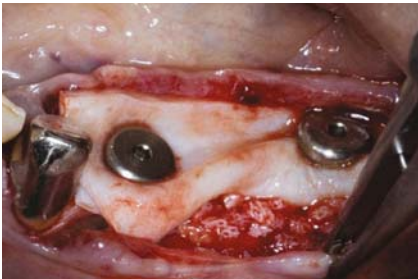
“Ceramic Implants meets Aesthetics” successful in Munich 41

## about the publisher

imprint 42



## NovoMatrix<sup>™</sup> Reconstructive Tissue Matrix – the next generation material



Ridge reconstruction



Gingival augmentation



Root coverage

NovoMatrix<sup>™</sup> Reconstructive Tissue Matrix is an acellular dermal matrix derived from porcine tissue intended for soft tissue applications. The proprietary LifeCell<sup>™</sup> tissue processing is designed to maintain the biomechanical integrity of the tissue, which is critical to support tissue regeneration.

### Benefits of NovoMatrix<sup>™</sup>

- shorter surgery time<sup>1</sup>
- lower patient morbidity<sup>1, 2, 3</sup>
- excellent tissue integration<sup>4, 5, 6, 7</sup>
- natural tissue and color structure<sup>8</sup>
- rapid and complication-free healing of soft tissue<sup>4, 6, 7, 9</sup>

[www.biohorizonscamlog.com/novomatrix](http://www.biohorizonscamlog.com/novomatrix)



References available at: [www.biohorizonscamlog.com/references\\_novomatrix](http://www.biohorizonscamlog.com/references_novomatrix)  
Before use, physicians should review all risk information, which can be found in the Instructions for Use attached to the packaging of each NovoMatrix<sup>™</sup> Reconstructive Tissue Matrix graft. NovoMatrix<sup>™</sup> is a trademark of LifeCell<sup>™</sup> Corporation, an AbbVie.  
©BioHorizons. All rights reserved. Not all products are available in all countries.