

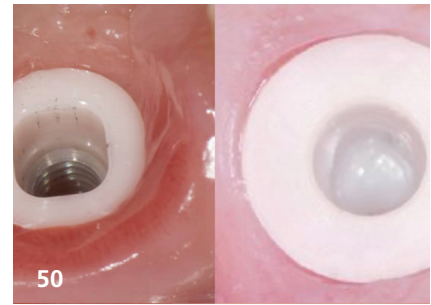


10

Guidelines and their functions



18

32nd Expert Symposium on Regenerative Procedures in Dentistry

50

Clinical and scientific differences between 1-piece and 2-piece ceramic dental implants

EDI News

- 08 "Implantology step by step": Start of the training series**
BDIZ EDI offers webinar series on implantology
- 10 Guidelines and their functions**
Review of the 33rd Conference of Experts on Implantology
- 14 BDIZ EDI reacts to political situation**
General Meeting 2023 in Kiel
- 18 Concepts of prosthetic care**
32nd Expert Symposium on Regenerative Procedures in Dentistry
- 20 BDIZ EDI on social media**
Instagram, Facebook, Twitter, YouTube
- 22 Congratulations to the curriculum graduates!**
24th Curriculum Implantology is now completed
- 24 Bigger, nicer, more useful**
New BDIZ EDI implant pass
- 26 We want YOU!**
BDIZ EDI and its multifaceted work
- 28 Recommendations for practitioners and patients**
BDIZ EDI Quality Guideline for Implantology
- 30 Implant maintenance is a team effort**
Implant care instructions brochure for patients
- 32 Europe Ticker**
- 34 Did you ever know...**
Facts about the BDIZ EDI
- 36 Joint statement on the European Health Data Space**
Proposal of the Council of European Dentists with partners
- 38 Damage caused by AI: Practitioners' liability**
EU Commission proposes AI Liability Directive
- 42 Perio & family doctors**
EFP launched campaign
- 44 This is Novi Sad ...**
International Congress of USSI EDI
- 46 New President of FDI**
World Dental Congress an FDI General Assembly in Sydney
- 48 Qualification for experienced implantologists**
Certification as an EDA Expert in Implantology

Case Studies

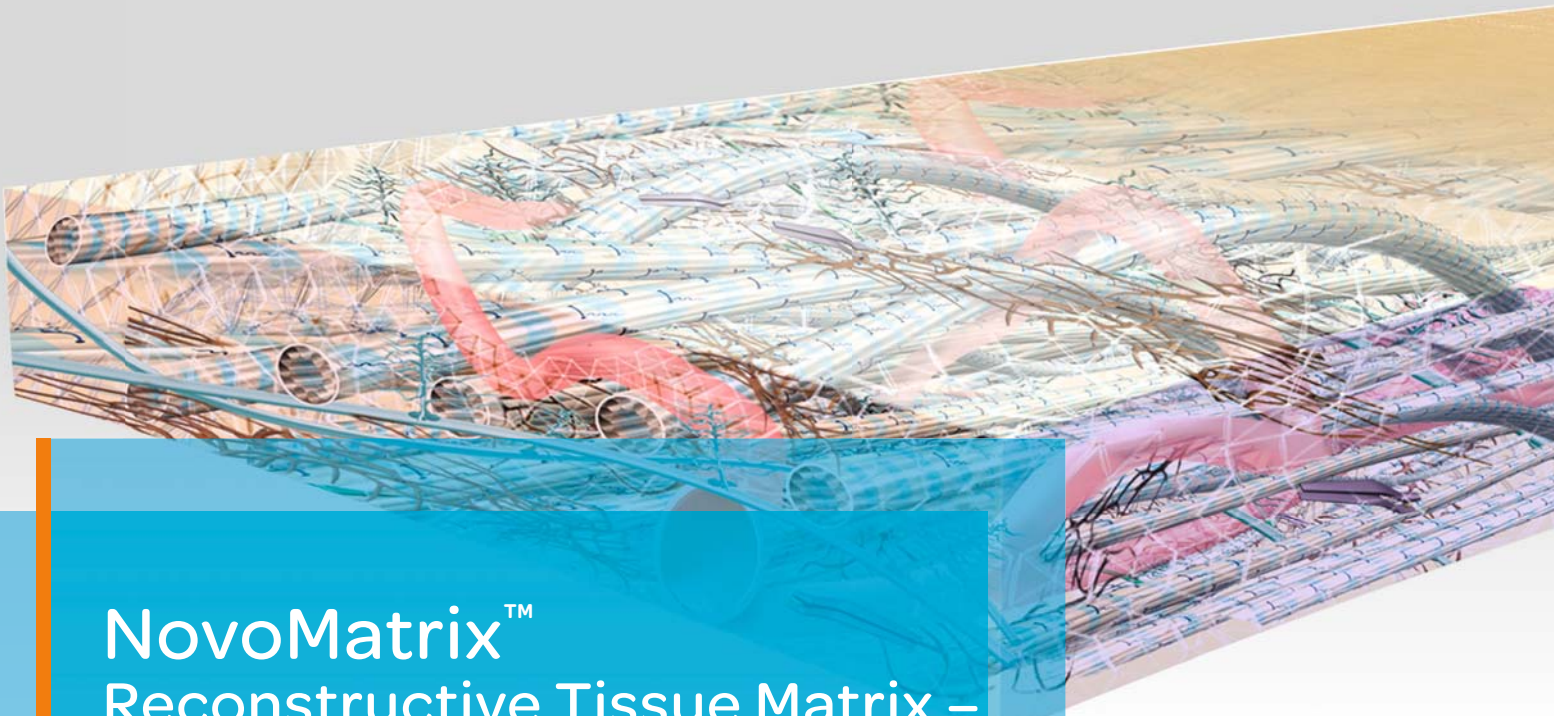
- 50 Clinical and scientific differences between 1-piece and 2-piece ceramic dental implants**
- 55 A tsunami is hitting oral implantology**
- 58 Long-term peri-implant stability**
- 60 Mandibular two implant retained overdenture**
- 64 Three-unit bridge in the posterior area**

Business & Events

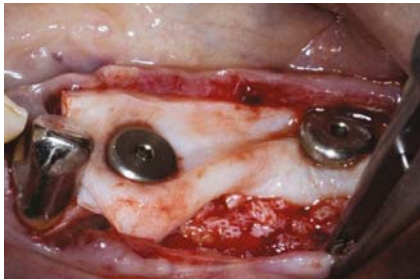
- 70 Global company expands**
OSSTEM Implant announces opening of the new subsidiaries in Europe
- 72 Passion delivered and healthy smiles supported**
Dentsply Sirona's Implant Solutions World Summit in Athens
- 74 The Association Dentaire Française Congress is the place to be**
Diving into dentistry excellence

News and Views

- 03** Editorial
- 06** Partner Organizations of BDIZ EDI
- 07** Scientific Board /Imprint
- 75** Product Reports/Product Studies/Product News
- 82** Calendar of Events/Publisher's Corner



NovoMatrix[™] Reconstructive Tissue Matrix – the next generation material



Ridge reconstruction



Gingival augmentation



Root coverage

NovoMatrix[™] Reconstructive Tissue Matrix is an acellular dermal matrix derived from porcine tissue intended for soft tissue applications. The proprietary LifeCell[™] tissue processing is designed to maintain the biomechanical integrity of the tissue, which is critical to support tissue regeneration.

Benefits of NovoMatrix[™]

- shorter surgery time¹
- lower patient morbidity^{1, 2, 3}
- excellent tissue integration^{4, 5, 6, 7}
- natural tissue and color structure⁸
- rapid and complication-free healing of soft tissue^{4, 6, 7, 9}

www.biohorizonscamlog.com/novomatrix



References available at: www.biohorizonscamlog.com/references_novomatrix
Before use, physicians should review all risk information, which can be found in the Instructions for Use attached to the packaging of each NovoMatrix[™] Reconstructive Tissue Matrix graft. NovoMatrix[™] is a trademark of LifeCell[™] Corporation, an AbbVie.
©BioHorizons. All rights reserved. Not all products are available in all countries.