

NucleOSS Europe

SLH—The connection between you and your patients

The DC-BONE-LEVEL implant features modern and aesthetic design details and offers a safe and comfortable surgical experience for the dentist and patient. A wide range of prosthetic abutment options helps to give patients a radiant smile. In addition, the implant gives patients self-confidence through its intelligent and strong design. With extensive abutment options, a convenient application kit and a registered clean surface, the DC-BONE-LEVEL implant is more than outstanding. The groundbreaking aspect of the DC-BONE-LEVEL implant is that it balances quality and price. The

implant has been carefully developed to increase comfort for clinicians and patients with its aesthetic design and high strength. SLH is a new dental implant system with the aim of giving patients back their bright smile and stands for "Smart Design, Leading System, Healthy Solution". By developing the highest level of biointegrity and excellent surface cleanliness, it is possible to create the highest possible standard for the user. Many years of research and development have resulted in a new implant system that enables the practitioner to achieve the best possible results.

Contact address

NucleOSS Europe GmbH
Germany
info@slhimplant.com
www.slhimplant.com

Zircon Medical | Patent™

The only two-piece zirconia implant with long-term studies

Minimum risk of fracture and predictable osseointegration—the Patent™ Dental Implant System has solved the challenges of conventional zirconia implants. Only its patented production process creates the surface roughness needed for fast and predictable osseointegration. In the last step of this revolutionary manufacturing method, process-induced microcracks are eliminated, maximising the Patent™ implant's overall strength and hardness. That the Patent™ approach works is substantiated by scientific research: In a pre-clinical study, Patent™ implants achieved bone-implant contact (BIC) of over 70% after just four weeks of healing, outperforming all other dental implants investigated in sim-

ilar studies. An independent long-term study over nine years found no implant fractures for any of the two-piece Patent™ implants investigated, as well as healthy and aesthetic soft tissue, stable marginal bone levels and no peri-implantitis. Patent™ proves that long-term implant success is a reality. Learn more at www.mypatent.com.

Contact address

**Zircon Medical
Management AG**
Switzerland
+41 44 5528454
www.mypatent.com



Dentalpoint

Zeramex XT—Two years follow-up proves success of the two-piece system

Zirconia, the dental material of the future, the two-piece design of the implant, the unique carbon fibre reinforced implant-abutment connection, the conventional and digital workflow as well as the outstanding clinical results are the pillars of success of the Swiss ceramic implant system Zeramex XT.

The heart of the implant-abutment connection is the VICARBO screw made of carbon re-inforced high-performance PEEK. The principle: the implant made of zirconium dioxide absorbs the compressive forces, while the VICARBO screw counteracts tensile and bending forces. The design of the external thread ensures high primary stability and the microrough

and hydrophilic Zerafil surface demonstrates convincing osseointegration with a success rate of 98%.

"...Astounding bone structure after remodel revealing hard cortical bone with absolutely no bone loss from around the implant (Zeramex XT 3.5 mm placed in the anterior region) ... The gum response was amazing..." points out Dr Joseph Sarkissian who has been using Zeramex XT for several years.

Studies confirm that two-piece zirconia implants show a similar bone integration compared to the titanium implants or demonstrate a significantly reduced inflammation and bone loss compared to the titanium implants.

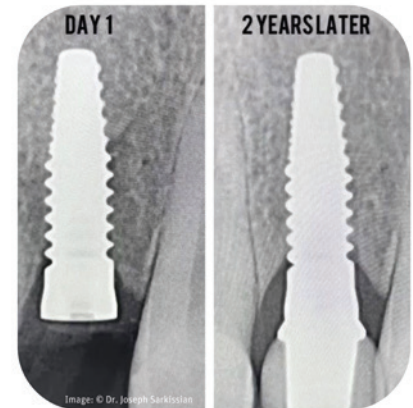


Image: © Dr. Joseph Sarkissian

Contact address

Dentalpoint AG

Switzerland

www.zeramex.com

ZiBone

ZiBone zirconia medical device



With our state-of-the-art products, we aim to equip dentists with the tools they need to create beautiful, natural-looking smiles for their patients. We will delve into the key features and benefits of our products, and how they can enhance your practice and patient outcomes.

ZiBone zirconia implants represent the pinnacle of dental implant technology. Crafted with precision and passion, our implants boast superior biocompatibility, promoting seamless integration with the jawbone. The aesthetic appeal of zirconia perfectly complements the natural dentition, creating a lifelike appearance that leaves patients with renewed confidence in their smiles. ZiBone zirconia implants are engineered to offer outstanding mechanical properties, en-

suring lasting durability and stability, setting new standards for implant success rates.

- **Biocompatibility:** Zirconia's biocompatibility reduces the risk of allergic reactions and inflammation, fostering a healthy healing process.
- **Optimal osseointegration:** The advanced design of ZiBone zirconia implants with Ra 0.6 µm surface treatment, facilitates reliable osseointegration, promoting stable and successful implant placements.
- **Versatility:** Our products cater to a wide range of dental cases, enabling you to provide personalised solutions for each patient's unique needs. Implant dimension 3.6/4.0/5.0 with different length 8/10/11.5/13/14.5.

Join us in revolutionising dental implantology— together, we create smiles that inspire confidence!

Contact address

**COHO BIOMEDICAL
TECHNOLOGY CO., LTD.**

Taiwan

+886 3311 2203

info@zibone.com

www.zibone.com

Dentsply Sirona

Introducing DS OmniTaper Implant System

The DS OmniTaper Implant System is an innovative solution that combines the proven technologies of Dentsply Sirona's EV Implant Family with new features that deliver efficiency and versatility. Unique to the implant system is an intuitive drilling protocol for reduced chair time and a pre-mounted TempBase for immediate restorations and efficient workflows.

The DS OmniTaper Implant System is the newest member of the EV Implant Family, alongside Astra Tech Implant System and DS PrimeTaper Implant System. The EV Implant Family offers surgical flexibility to cover virtually every indication. All three implant systems deliver biologically driven implant designs for natural aesthetics and

lasting bone care, have one connection for restorative clarity, and are optimised for a seamless fit with digital dentistry workflows.

Like the rest of the EV Implant Family, the DS OmniTaper Implant System features the Osseo-Speed implant surface and the conical EV connection that provides access to the harmonised and comprehensive EV prosthetic portfolio for restorative flexibility and immediate chairside solutions.

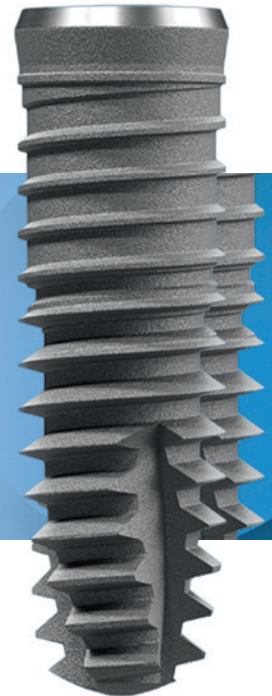
Contact address

Dentsply Sirona

Sweden

+46 31 3763000

www.dentsplysirona.com



Fotona

Advancing dental laser technology

Fotona's LightWalker is a revolutionary dental laser system, incorporating state-of-the-art technologies that redefine the industry. With 20 W of power, 2 wavelengths, 5 pulse durations, and 4 special pulse modalities, LightWalker offers dentists an unparalleled range of clinical applications.

The precision and improved ablation efficacy of LightWalker's patented QSP mode make it invaluable for hard-tissue treatments, debonding veneers, orthodontic brackets, dental aesthetics, and surgery, addressing various challenges with a single solution.

Practitioners are thrilled by the efficacy of the LightWalker's SWEEPS mode in endodontic cases, witnessing the power of bubbles in cleaning narrow root canal spaces, removing smear layer, debris, and biofilm. Moreover, SWEEPS extends its benefits beyond direct laser therapy, enabling non-invasive, non-surgical removal of biofilm and calculus in periodontal and peri-implant therapy.

The laser's innovative SMOOTH mode expands the horizons of dental practices, allowing them to offer Fotona's cutting-edge aesthetic and anti-snoring laser therapies. With treatments like SmoothEye®, LightWalker 3D®, LipLase®, and NightLase®, dental practices can attract new patients, fulfilling patient expectations with a wide range of non-invasive options that can enhance revenue and profitability.

Embrace the future of dental laser technology with Fotona's LightWalker, empowering dentists with unparalleled versatility for enhanced patient care.

Contact address

Fotona d.o.o., Sweden

+386 1 5009100

www.fotona.com

