

	Event	Location	Date	Details/Registration
02/2024	AEEEDC Dubai	Dubai World Trade Centre UAE	06–08 February 2024	https://aeedc.com
	19 th Expert Symposium of BDIZ EDI	Cologne Germany	11 February 2024	www.bdizedi.org
	Chicago Dental Society Midwinter Meeting	McCormick Place West Chicago USA	22–24 February 2024	https://www.cds.org/midwinter-meeting
04/2024	OSSTEM World Meeting	Seoul South Korea	27–28 April 2024	www.oic-europe.eu
05/2024	ITI World Symposium 2024	Singapore EXPO Singapore	09–11 May 2024	https://worldsymposium.iti.org

EDI Journal – Information for authors

EDI Journal – the interdisciplinary journal for prosthetic dental implantology is aimed at dentists and technicians interested in prosthetics implantology. All contributions submitted should be focused on this aspect in content and form. Suggested contributions may include:

- Original scientific research
- Case studies
- Product studies
- Overviews

Manuscript submission

Submissions should be made in digital form. Original articles will be considered for publication only on the condition that they have not been published elsewhere in part or in whole and are not simultaneously under consideration elsewhere.

Manuscripts

Pages should be numbered consecutively, starting with the cover page. The cover page should include the title of the manuscript and the name and degree for all authors. Also included should be the full postal address, telephone number, and e-mail address of the contact author.

Manuscripts can be organised in a manner that best fits the specific goals of the article, but should always include an introductory section, the body of the article and a conclusion.

Illustrations and tables

Each article should contain a minimum of 20 and a maximum of 50 pictures, except in unusual circumstances. Our publishing house attaches great importance to high quality illustrations. All illustrations should be numbered, have a caption and be mentioned in the text.

The photos should have a size of 10x15 cm, the image or graphic files must have a resolution of 300dpi. TIFF, EPS and JPG file formats are suitable. Radiographs, charts, graphs, and drawn figures are also accepted.

Captions should be brief one or two-line descriptions of each illustration, typed on a separate page following the references. Captions must be numbered in the same numerical order as the illustrations. Tables should be typed on a separate page and numbered consecutively, according to citation in the text. The title of the table and its caption must be on the same page as the table itself.

References

Each article should contain a minimum of 10 and a maximum of 30 references, except in unusual circumstances. Citations in the body of the text should be made in numerical order. The reference list should be typed on a separate sheet and should provide complete bibliographical information in the format exemplified below:

[1] Albrektsson, T.: A multicenter report on osseointegrated oral implants. *J Prosthet Dent* 1988; 60, 75–82.

[2] Hildebrand, H. F., Veron, Chr., Martin, P.: Nickel, chromium, cobalt dental alloys and allergic reactions: an overview. *Biomaterials* 10, 545–548 (1989).

Review process

Manuscripts will be reviewed by three members of the editorial board. Authors are not informed of the identity of the reviewers and reviewers are not provided with the identity of the author. The review cycle will be completed within 60 days. Publication is expected within nine months.

Copyright

With acceptance of a manuscript, the publisher has the right to publish and translate the text, permit its reproduction, electronically store it in databases, produce reprints, photocopies and microcopies, and publish the text online. Any further utilisation or publication of the article is subject to prior approval by OEMUS MEDIA AG.

Page charges and reprints

There are no page charges. The publisher will cover all costs of production. The journal will provide the primary author with a PDF file of the article and a free copy of the journal issue in which the article appears.

Editors office

OEMUS MEDIA AG
Holbeinstraße 29 · 04229 Leipzig · Germany
Phone: +49 341 48474-224 · Fax: +49 341 48474-290
s.thieme@oemus-media.de
www.oemus.com



DEEP CONNECTION

BONE LEVEL IMPLANT



DC Bone Level Implant establishes a deep connection between you and your patient, thanks to its wide range of superstructures and advanced strength.

slhimplant.com

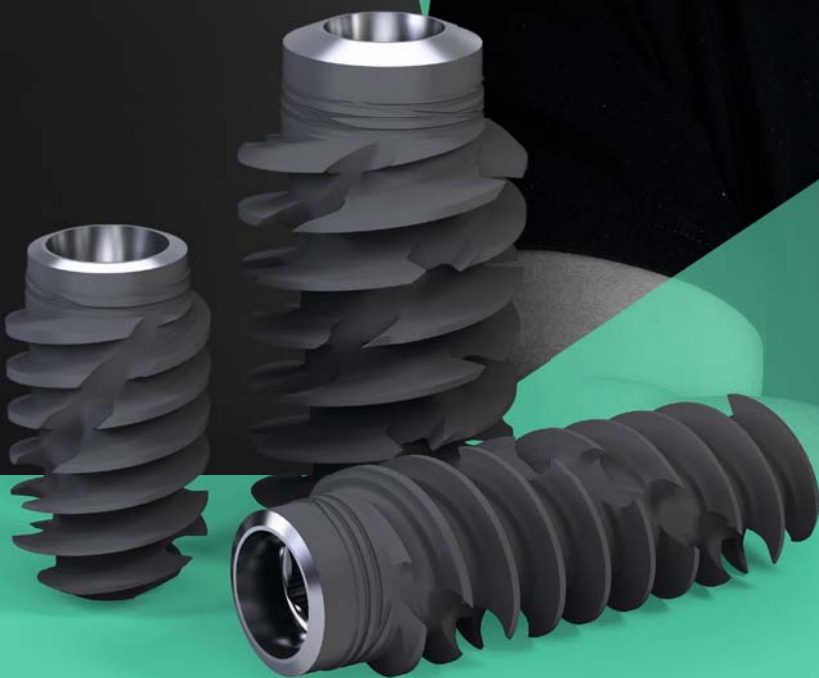


made in germany

LOOKING FOR CONFIDENCE?

Straumann® BLX Implant System
delivers Swiss precision and quality
for outstanding clinical performance
even in challenging situations.

WWW.STRAUMANN.COM



A0016/en/D/00 08/23

Roxidid®



SLActive®

