

SWISS DENTAL SOLUTIONS

Implanting has never been easier, faster or safer!

Start smart and well-organised with ceramic implants and let SDS work for you: with the “SDSBOX” service. This offers additional security and sets a new benchmark in the “Biological and Digital Workflow”. The SDSBOX contains everything you need for a simple, late implantation. The process flow could not be clearer:

1. Request SDS login,
2. Quickly and easily configure the SDSBOX online and have it delivered,
3. Open the SDSBOX,
4. Take the included surgical guide and place it into position,
5. Use the ultra-precise implant bed with the included ceramic drills and tools for the guided navigation,
6. Insert the implant effortlessly into the perfect position.

Done! Optional: Fix the temporary prosthesis supplied in the BOX in the planned position using the positioning splint. For the optimum healing process: provide your patient with a three-month supply of vitamin D3 and K2. More information at sdsbox.swissdentalsolutions.com



SDS SWISS DENTAL SOLUTIONS AG, Switzerland
info@swissdentalsolutions.com • www.swissdentalsolutions.com

CaviTAU

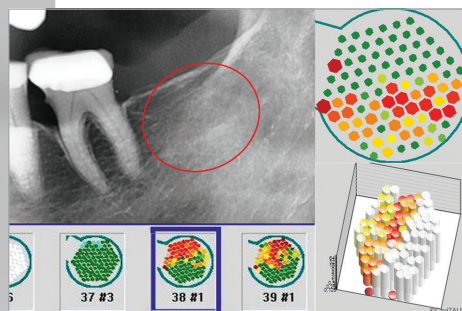
The future of diagnostics: CaviTAU® sets new standards for implantologists

Implantologists are on the verge of an exciting turnaround in their practice. CaviTAU®, a pioneer in medical innovation, unveils a breakthrough development in diagnostics for implantologists. This ultrasound device brings personalised precision to the forefront, creating the fourth dimension of dental implantology. The particular strength of CaviTAU® lies in the combination of minimally invasive application and diagnosis. The software enables the interpretation of bone structures, bone composition and ana-

tomical subtleties. This leads to a level of reporting that was previously difficult to achieve—an individualised image of each patient’s jawbone. Digital colour evaluations allow easy interpretation of the condition of the jawbone.

The precision with which the ultrasound device works minimises the risk of complications and increases the chances of success of each implantation. Specifically, the chance of an accelerated healing process is increased if the ultrasound measurement performed in advance means that the implantation is carried out in a healthy jawbone.

“CaviTAU® technology is redefining the way we look at implantation,” explains Dr Dr Michael Rak, renowned implantologist and user of CaviTAU®. “The combination of state-of-the-art diagnostics and predictable safety for oral surgical procedures allows us to take patient care to a new dimension.”



CaviTAU
+49 89 244154460
www.cavitaude.com

The articles in this category are provided by the manufacturers or distributors and do not reflect the opinion of the editorial team.

Dentalpoint

Zeramex XT—Two years follow-up proves success of the two-piece system

Zirconia, the dental material of the future, the two-piece design of the implant, the unique carbon fibre reinforced implant–abutment connection, the conventional and digital workflow as well as the outstanding clinical results are the pillars of success of the Swiss ceramic implant system Zeramex XT.

The heart of the implant–abutment connection is the VICARBO screw made of carbon re-inforced high-performance PEEK. The principle: the implant made of zirconium dioxide absorbs the compressive forces, while the VICARBO screw counteracts tensile and bending forces. The design of the external thread ensures high primary stability and the microrough and hydrophilic Zerafil surface demonstrates convincing osseointegration with a success rate of 98%.

“...Astounding bone structure after remodel revealing hard cortical bone with absolutely no bone loss from around the implant (Zeramex XT 3.5 mm placed in the anterior region) ... The gum response was amazing...” points out Dr Joseph Sarkissian who has been using Zeramex XT for several years.

Studies confirm that two-piece zirconia implants show a similar bone integration compared to the titanium implants or demonstrate a significantly reduced inflammation and bone loss compared to the titanium implants.

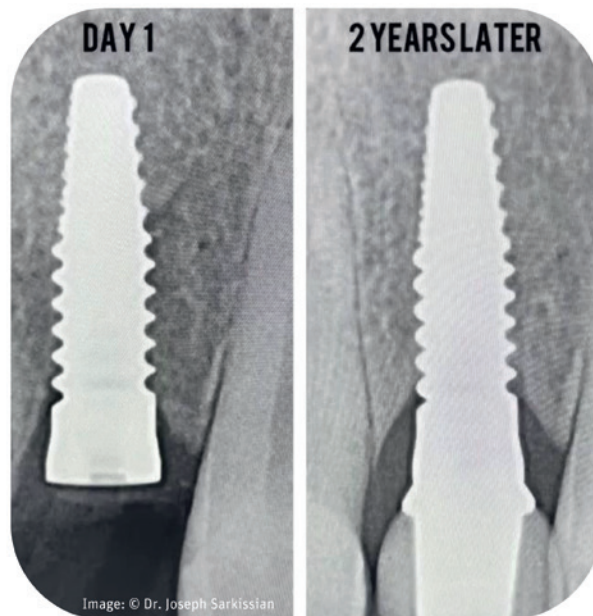


Image: © Dr. Joseph Sarkissian

Dentalpoint AG, Switzerland
www.zeramex.com

ZiBone

ZiBone zirconia medical device: revolutionising dental implants for straight smiles

With our state-of-the-art products, we aim to equip dentists with the tools they need to create beautiful, natural-looking smiles for their patients. We will delve into the key features and benefits of our products, and how they can enhance your practice and patient outcomes.

ZiBone zirconia implants represent the pinnacle of dental implant technology. Crafted with precision and passion, our implants boast superior biocompatibility, promoting seamless integration with the jawbone. The aesthetic appeal of zirconia perfectly complements the natural dentition, creating a lifelike appearance that leaves patients with renewed confidence in their smiles. ZiBone zirconia implants are engineered to offer outstanding mechanical properties, ensuring last-

ing durability and stability, setting new standards for implant success rates.

- Biocompatibility: Zirconia's biocompatibility reduces the risk of allergic reactions and inflammation, fostering a healthy healing process.
- Optimal osseointegration: The advanced design of ZiBone zirconia implants with Ra 0.6 µm surface treatment, facilitates reliable osseointegration, promoting stable and successful implant placements.
- Versatility: Our products cater to a wide range of dental cases, enabling you to provide personalised solutions for each patient's unique needs. Implant dimension 3.6/4.0/5.0 with different length 8/10/11.5/13/14.5.

Join us in revolutionising dental implantology—together, we create smiles that inspire confidence!

COHO BIOMEDICAL TECHNOLOGY CO., LTD.
 Taiwan
 +886 3311 2203
info@zibone.com
www.zibone.com



Zircon Medical | Patent™

The only two-piece zirconia implant with long-term studies

Minimum risk of fracture and predictable osseointegration—the Patent™ Dental Implant System has solved the challenges of conventional zirconia implants. Only its patented production process creates the surface roughness needed for fast and predictable osseointegration. In the last step of this revolutionary manufacturing method, process-induced micro-cracks are eliminated, maximising the Patent™ implant's overall strength and hardness. That the Patent™ approach works is substantiated by scientific research: In a preclinical study, Patent™ implants achieved bone-implant contact (BIC) of over 70% after just four weeks of healing, outperforming all other dental implants investigated in similar studies. An independent long-term study over nine years found no implant fractures for any of the two-piece Patent™ implants investigated, as well as healthy and aesthetic soft

tissue, stable marginal bone levels and no peri-implantitis. Patent™ proves that long-term implant success is a reality. Learn more at www.mypatent.com.

Zircon Medical Management AG
Switzerland
+41 44 5528454
www.mypatent.com



breident medical

High primary stability and aesthetic appearance

The whiteSKY implant system from breident is among the best-documented zirconia implant systems worldwide. It has not only demonstrated excellent osseointegration and longevity in numerous studies but has also proven its efficacy in practice. In fact, the longevity of whiteSKY implants is comparable to that of titanium implants. The whiteSKY implant system offers two different implant types: the whiteSKY Tissue Line and the whiteSKY Alveo Line. The narrow whiteSKY Tissue Line implant provides sufficient space for both the hard and soft tissue and ensures an aesthetically pleasing appearance with its slightly tapered shape in the sulcus area, transitioning from the gingiva to the implant crown. The whiteSKY Alveo Line, on the other hand, is ideal for immediate loading as it fills the extraction socket. At the same time, it provides the treating doctor with the possibility to individualise the implant according to the specific requirements of the clinical case.

Optimal conditions for soft-tissue attachment and high mechanical stability

Both the Alveo and Tissue Line implants of the whiteSKY system offer optimal conditions for soft-tissue attachment due to their specially designed sulcus surface. The whiteSKY implants are made of hardened zirconia and are one-piece, which gives them particularly high mechanical stability. Thanks to the improved thread design and bone-quality-oriented surgical protocol, the whiteSKY implants achieve high primary stability, making them ideal for immediate loading. Studies have shown that immediate implant placement can improve the bone-implant contact by more than 50 per cent.

breident medical GmbH & Co. KG, Germany
info@breident.com · www.breident-implants.com



The articles in this category are provided by the manufacturers or distributors and do not reflect the opinion of the editorial team.

Congresses, courses and symposia

IAOC[®] INTERNATIONAL SOCIETY OF CERAMIC IMPLANTOLOGY

Dubai Ceramic Implant Conference 2.0 (DCIC 2.0)

25–26 April 2024
Dubai, UAE
www.iaoci.com

© Montrez - iStock-Adobe.com

ISMI INT. SOCIETY OF METAL FREE IMPLANTOLOGY

8th Annual Meeting of ISMI

3–4 May 2024
Hamburg, Germany
www.ismi.me

© Sina Eitmer - iStock-Adobe.com

SCOI EACim

Ceramic implants as an alternative to titanium: Where are we?

15 June 2024
Madrid, Spain
eacim-ceramic-implantology.com

© pigprox - iStock-Adobe.com

ESCI European Society for Ceramic Implantology

3rd European Congress for Ceramic Implant Dentistry

26–28 September 2024
Zurich, Switzerland
esci-online.com

© Xudorix - iStock-Adobe.com

ceramic implants

international magazine of ceramic implant technology

Imprint

Publisher

Torsten R. Oemus
oemus@oemus-media.de

CEO

Ingolf Döbbbecke
doebbecke@oemus-media.de

Member of the Board

Lutz V. Hiller
hiller@oemus-media.de

Chairman Science & BD

Jürgen Isbaner
isbaner@oemus-media.de

Editorial Council

Dr Michael Gahlert (Germany)
Dr Sofia Karapatakis (Greece)
Dr Franz-Jochen Mellinghoff (Germany)

Editorial Management

Timo Krause
t.krause@oemus-media.de

Dr Alina Ion

a.ion@oemus-media.de

Executive Producer

Gernot Meyer
meyer@oemus-media.de

Product Manager

Timo Krause
t.krause@oemus-media.de

Art Director

Alexander Jahn
a.jahn@oemus-media.de

Designer

Aniko Holzer
a.holzer@oemus-media.de

Customer Service

Marius Mezger
m.mezger@oemus-media.de

Published by

OEMUS MEDIA AG
Holbeinstrasse 29
04229 Leipzig, Germany
Phone: +49 341 48474-0
Fax: +49 341 48474-290
kontakt@oemus-media.de

Printed by

Silber Druck oHG
Otto-Hahn-Straße 25
34253 Lohfelden, Germany

www.oemus.com



Copyright Regulations

ceramic implants international magazine of ceramic implant technology is issued three times a year and is a special edition of implants international magazine of oral implantology — the first issue was published in October 2017. The magazine and all articles and illustrations therein are protected by copyright. Any utilisation without the prior consent of editor and publisher is inadmissible and liable to prosecution. This applies in particular to duplicate copies, translations, microfilms, and storage and processing in electronic systems.

Reproductions, including extracts, may only be made with the permission of the publisher. Given no statement to the contrary, any submissions to the editorial department are understood to be in agreement with a full or partial publishing of said submission. The editorial department reserves the right to check all submitted articles for formal errors and factual authority, and to make amendments if necessary. No responsibility shall be taken for unsolicited books and manuscripts. Articles bearing symbols other than that of the editorial department, or which are distinguished by the name of the author, represent the opinion of the aforementioned, and do not have to comply with the views of OEMUS MEDIA AG. Responsibility for such articles shall be borne by the author. Responsibility for advertisements and other specially labelled items shall not be borne by the editorial department. Likewise, no responsibility shall be assumed for information published about associations, companies and commercial markets. All cases of consequential liability arising from inaccurate or faulty representation are excluded. General terms and conditions apply, legal venue is Leipzig, Germany.

ZIBONE Being Natural
Being Beautiful

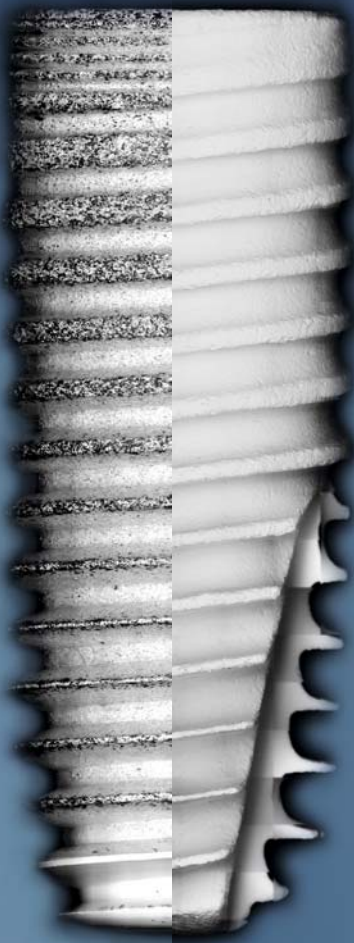
IMPLANT



COHO BIOMEDICAL TECHNOLOGY CO.,LTD.
www.zibone.com

WE FIGHT DIRTY.

sterile + dirty



sterile + clean

(R)Evolution – CHAMPIONS IMPLANTS

SDS 1.2 – SWISS DENTAL SOLUTIONS

SDS 2.2 – SWISS DENTAL SOLUTIONS

ICX-Premium – MEDENTIS MEDICAL

Astra Tech EV – DENTSPLY SIRONA

Patent – CHAMPIONS IMPLANTS

Inverta – SOUTHERN IMPLANTS

whiteSKY – BREDENT MEDICAL

Prama – SWEDEN & MARTINA

Kontakt S – BIOTECH DENTAL

BlueDiamond – MEGAGEN

AnyRidge – MEGAGEN

SuperLine – DENTIUM

In-Kone – GLOBAL D

T6 – NUCLEOSS

UnicCa – BTI



- Receive quality information about your implant in use.
- Provide more safety for your patients and avoid negligence claims.
- Win new patients as a CleanImplant Certified Dentist.
- Find out more. Join in and support the charitable initiative.



More information about this non-profit initiative:
www.cleanimplant.com/dentists

CLEAN IMPLANT
FOUNDATION

The independent dental implant quality assessment.