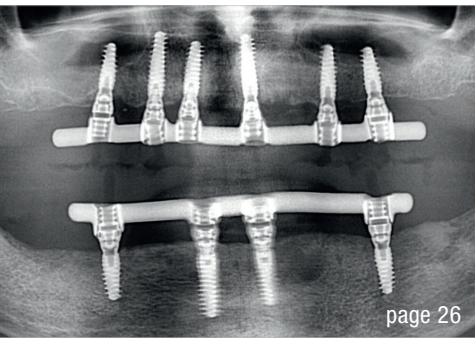


page 14



page 20



page 26

## editorial

Here's to new endeavours for the year! 03  
Dr Georg Bach

## case report

Soft-tissue **substitute** versus **autologous** tissue 06  
Dr Yazad Gandhi

Full-arch: **Full rehabilitation** of the upper jaw—Part 1 14  
Dr Dr Michael Rak, Norbert Wichnalek, Arbnor Saraci,  
Lukas Wichnalek

**Implant-prosthetic** rehabilitation 20  
Dr Stefano Scavia

**Screw-retained** solution for terminal dentition 26  
Dr Gian Battista Greco

## interview

**Advancing technologies** in ceramic implantology—  
**AI** sets new milestones in dental treatment 34  
An interview with Dr Shepard DeLong

## events

MIS unveils plans for its **global** conference in Palma de Mallorca 37

A **fascinating** experience 38  
Dr Elisabeth Jacobi-Gresser

**Connecting** top dental professionals 40

## news

Once you **see** it, you cannot **unsee** it! 41

## about the publisher

imprint 42

Cover image courtesy of CleanImplant Foundation, [www.cleanimplant.com](http://www.cleanimplant.com)



© A. S. Floro/Shutterstock.com

**CONOLOG®**  
**PROGRESSIVE-LINE**  
conical performance [1,2]  
at bone level

**Precise conical connection**

- Long conus for reduced micromovements
- Superior positional stability in comparison to other conical systems [1, 2]
- Integrated platform switching supporting the preservation of crestal bone



[www.biohorizonscamlog.com/conelog](http://www.biohorizonscamlog.com/conelog)



[1] Semper-Hogg, W, Kraft, S, Stiller, S et al. Analytical and experimental position stability of the abutment in different dental implant systems with a conical implant-abutment connection Clin Oral Invest (2013) 17: 1017.

[2] Semper Hogg W, Zulauf K, Mehrhof J, Nelson K. The influence of torque tightening on the position stability of the abutment in conical implant-abutment connections. Int J Prosthodont 2015;28:538-41.