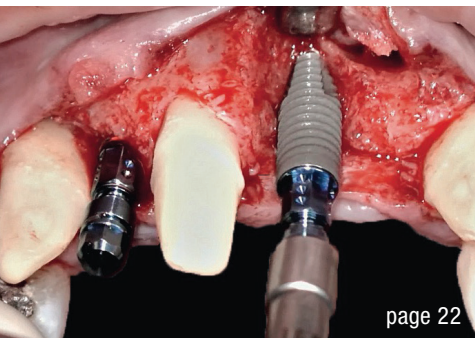
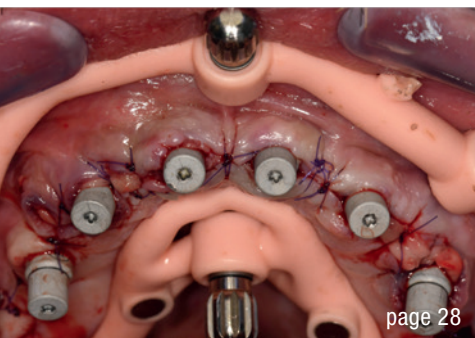


page 16



page 22



page 28

Cover image courtesy of Thommen Medical AG, www.thommenmedical.com



editorial

Pioneering insights and innovations in implantology 03
Dr Georg Bach

research

Redefining dental care standards with advanced proven PEMF technology 06

Prof. Shlomo Barak DMD

Peri-implantitis prevention starts with the choice of a clean implant 12

Drs Dirk U. Duddeck & Dana Adyani-Fard

case report

Late implant placement following bilateral sinus floor elevation 16

Prof. Paolo Maturo & Dr Edoardo Magnanelli

Long-term success of implant-supported rehabilitation in the aesthetic zone: A nine-year follow-up case report 22

Drs Léon Pariente & Karim Dada

Full maxillary rehabilitation with immediate implant placement of NEVO RC INICELL® implants in Type 3 bone 28

Dr Mathieu Rousset

Immediate two-piece ceramic implants with immediate provisionalisation in the posterior region 32

Drs Alexandre Marques Paes da Silva, Alice Maria de Oliveira Silva, Lissya Tomaz da Costa Gonçalves, Rodrigo Franco Motta, Daniel Moraes Telles, Mayla Kezy Silva Teixeira & Eduardo Veras Lourenço

interview

Passion for customers, innovation and growth 36

events

DDS.Berlin concludes its premiere with positive feedback 38

Engaging clinical education and meaningful networking at Implant Solutions World Summit 2024 40

EuroPerio11 kicks off with virtual event and ambassador meet-up 44

The beauty of regeneration 45

Details make perfection: EAO congress 2024 46

Patient-customised concepts: "Implantology 4.0" in Düsseldorf this November 48

30 years OEMUS MEDIA 47

news

manufacturer news 49

about the publisher

imprint 50

Visit us at
Booth F55
24 – 26 October
EAO Milan 2024

CONOLOG® PROGRESSIVE-LINE conical performance ^[1,2] at bone level

Precise conical connection

- Long conus for reduced micromovements
- Superior positional stability in comparison to other conical systems [1, 2]
- Integrated platform switching supporting the preservation of crestal bone



www.biohorizonscamlog.com/conelog

[1] Semper-Hogg, W, Kraft, S, Stiller, S et al. Analytical and experimental position stability of the abutment in different dental implant systems with a conical implant-abutment connection Clin Oral Invest (2013) 17: 1017.

[2] Semper Hogg W, Zulauf K, Mehrhof J, Nelson K. The influence of torque tightening on the position stability of the abutment in conical implant-abutment connections. Int J Prosthodont 2015;28:538-41.

CONOLOG® is a registered trademark of CAMLOG Biotechnologies GmbH. It may however not be registered in all markets.



 biohorizons
camlog