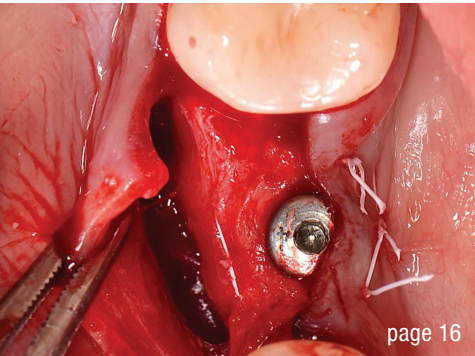


page 06



page 16



page 26

Cover image courtesy of MEDENCY SRL  
www.medency.com



## editorial

Defining the future of implantology 03  
Dr Georg Bach

## research

Dental-dedicated MRI—a new imaging technique in implantology? 06

Dr Georg Bach & Markus Bach

Impact of periodontitis on systemic health and on implants—Part 2 12

Profs Curd Bollen, Paul Tipton & Gagik Hakobyan

## case report

Novel technique using periosteum as a regenerative tool in alveolar bone augmentation 16

Drs Cosmin Dima & Iulia Florea

## interview

30 years of laser dentistry 26

An interview with Dr Frank Liebaug

## events

The global dental industry gathers in Cologne International Dental Show (IDS) 2025 30

Focus on science and practice 32

3<sup>rd</sup> European Congress for Ceramic Implantology

World's leading congress in periodontology and implant dentistry 34

EuroPerio11

Shaping the future of ceramic implantology 36

4<sup>th</sup> Annual Congress of EACim

## news

news 37

manufacturer news 40

## about the publisher

imprint 42

**CONOLOG®**  
**PROGRESSIVE-LINE**  
conical performance [1,2]  
at bone level

**Precise conical connection**

- Long conus for reduced micromovements
- Superior positional stability in comparison to other conical systems [1, 2]
- Integrated platform switching supporting the preservation of crestal bone



[www.biohorizonscamlog.com/conelog](http://www.biohorizonscamlog.com/conelog)



[1] Semper-Hogg, W, Kraft, S, Stiller, S et al. Analytical and experimental position stability of the abutment in different dental implant systems with a conical implant-abutment connection Clin Oral Invest (2013) 17: 1017.

[2] Semper Hogg W, Zulauf K, Mehrhof J, Nelson K. The influence of torque tightening on the position stability of the abutment in conical implant-abutment connections. Int J Prosthodont 2015;28:538-41.