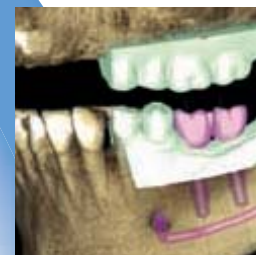




IDS



ProMax 3D • PlanScan • ProFace
Unique 3D combination for open CAD/CAM



Digital perfection

Planmeca sets new standards with world's first dental unit integrated intraoral scanner for open connectivity to various CAD/CAM systems.

We would like to invite you to explore the dentistry in new dimensions – see the perfect combination of digital intraoral scan, CBVT and 3D facial photo datasets in one 3D image. This digital perfection enables you to study patient's complete anatomy in detail, plan and utilise open interface

with modern CAD/CAM systems according to your needs. Now you can be one of the pioneering specialists, whether you are an implantologist, endodontist, periodontist, orthodontist or maxillofacial surgeon. The new era of dentistry is reality. It's your decision.

Planmeca ProMax 3D
All volume sizes

