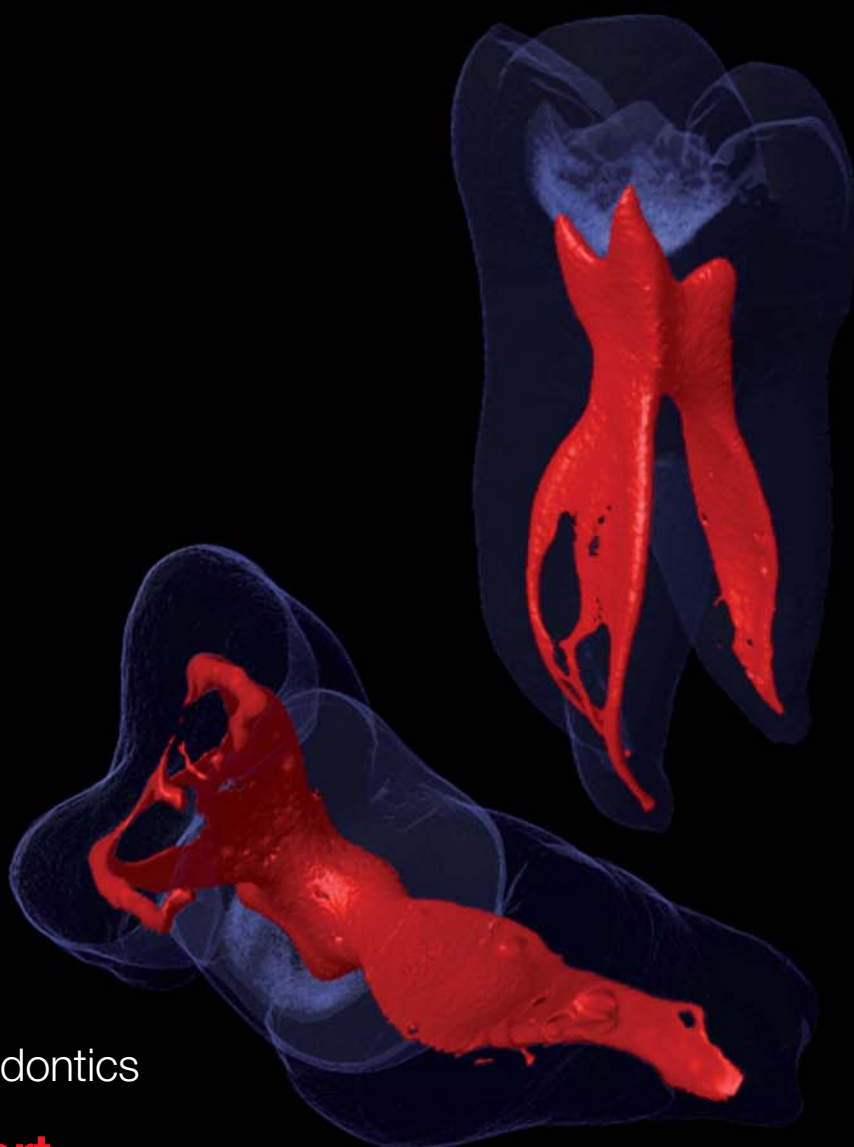


roots

international magazine of endodontology

1 2011



| **special**

Laser in endodontics

| **case report**

Revascularisation of the necrotic open apex

| **clinical technique**

The WaveOne single-file reciprocating system



After endo laser treatment there is no smear layer around the opening of the lateral canal.

The universe at your fingertips.



LightWalker

Introducing the highest technology dental laser system

Supreme clinical results in:

- TwinLight™ Perio Treatments (TPT)
- TwinLight™ Endo Treatments (TET)
- No sutures soft tissue surgery
- Gentle TouchWhite™ bleaching
- Patient-friendly conservative dentistry

Unmatched simplicity of use:

- Pre-sets for over 40 applications
- Intuitive user navigation
- Balanced and weightless OPTOflex arm
- Automatic Nd:YAG handpiece detection system
- Er:YAG scanner ready

Journey into a new dental experience with speed, precision and great results.

Visit Fotona at IDS 2011, Hall 10.2, Booth M050.

www.lightwalkerlaser.com

Fotona
choose perfection

