

# implants

international magazine of oral implantology

2<sup>2011</sup>



| **special**

Back to the egg:  
An evidence-based endo-implant  
algorithm (Part II)

| **clinical technique**

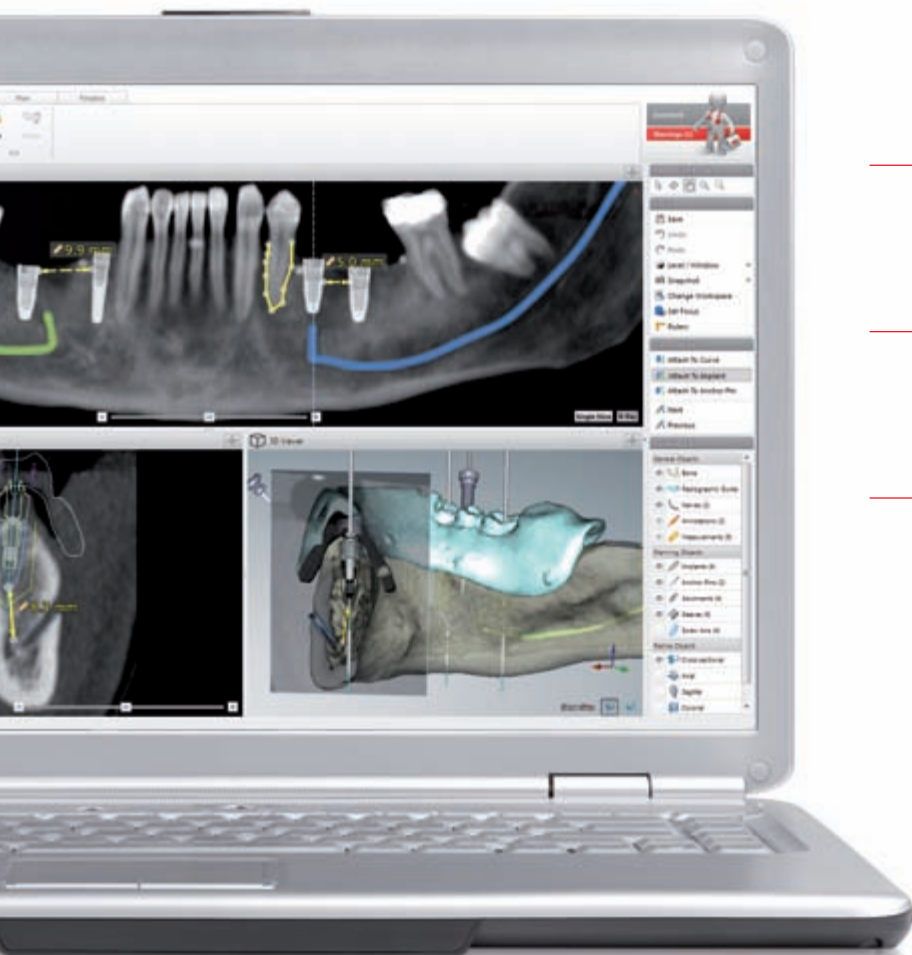
A simplified method for the removal  
of cemented implant prosthetics

| **meetings**

DGZI's 41<sup>st</sup> International Annual Congress  
celebrated in autumn in Cologne



# Take diagnostics and planning to the next level.



---

Maximize treatment safety and predictability.

---

Enhance quality and efficiency through digital diagnostics.

---

Enjoy planning flexibility for optimized function and esthetics.

---



**It's called NobelClinician Software.** You can diagnose and plan treatments with a new level of predictability and safety. Enhance your diagnostics with combined 2D and 3D views and optimize implant placement based on patient anatomy and prosthetic needs. Using NobelClinician Software, you can collaborate with your treatment partners through the integrated NobelConnect functionality and present treatment

options to your patients. In addition, you have the option to complete the digital path with the proven guided surgery concept NobelGuide. When you partner with Nobel Biocare, a pioneer in digital dentistry, you benefit from proven technology that ensures superior function and natural-looking esthetics. **Their smile, your skill, our solutions.**

[nobelbiocare.com/digital](http://nobelbiocare.com/digital)

