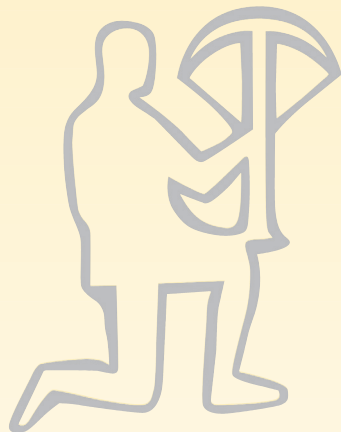
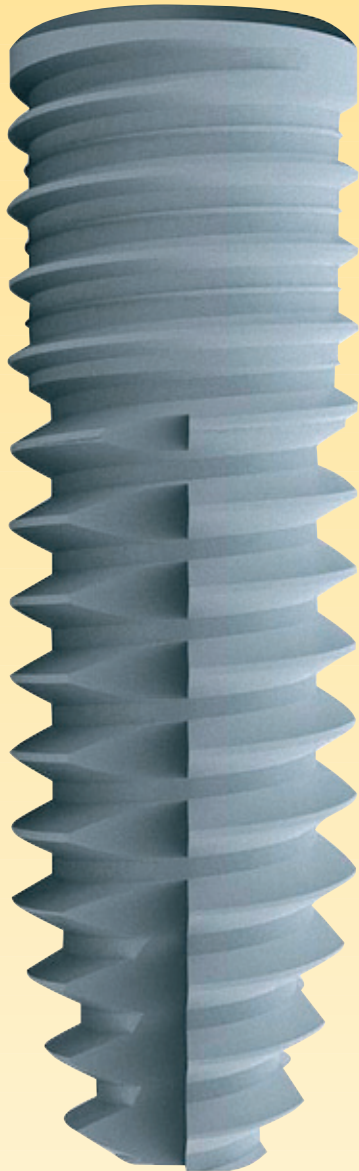
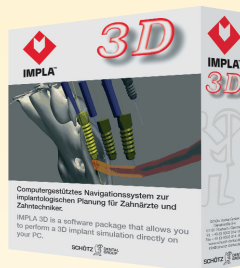


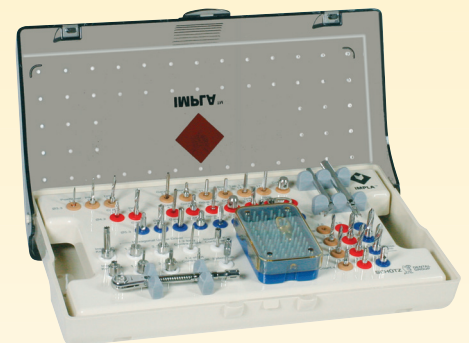
# IMPLA™ Implants - simply safe



|  |   |
|--|---|
|  | <p><b>IMPLA™ Dual Surface</b></p> <ul style="list-style-type: none"> <li>• ideal for compact bone</li> <li>• optimised for gingiva-level insertion</li> </ul>               |
|  | <p><b>IMPLA™ Micro Retention</b></p> <ul style="list-style-type: none"> <li>• optimised for soft bone and sinus elevation</li> <li>• ideal for primary stability</li> </ul> |
|  | <p><b>IMPLA™ Mini Implant</b></p> <ul style="list-style-type: none"> <li>• ball or conical attachment</li> <li>• minimally invasive</li> <li>• easy to insert</li> </ul>    |
|  | <p><b>IMPLA™ Cylindrical</b></p> <ul style="list-style-type: none"> <li>• no additional thread cutting necessary</li> <li>• integrated platform switching</li> </ul>        |



**IMPLA™ 3D**  
Navigation



**IMPLA™ surgery box**  
The all-round box

For more information visit our homepage  
[www.schuetz-dental.com](http://www.schuetz-dental.com)  
or request our catalog!

