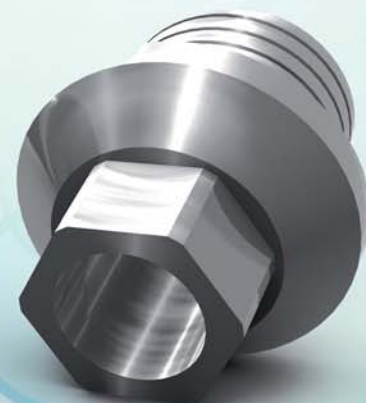
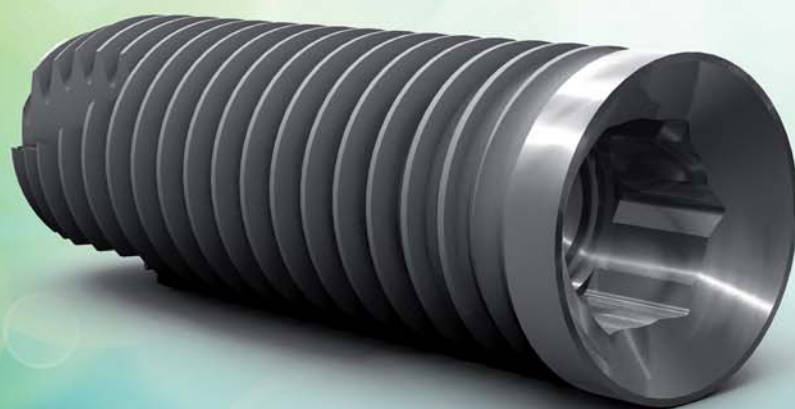


# implants

international magazine of oral implantology

3<sup>2011</sup>



## | case report

44 Roots — 44 Implants

## | clinical technique

Immediate restoration in the fully edentulous maxilla region

## | interview

"Paradigms are beginning to shift"



dentium

# An implant like no other.

---

High initial stability even in compromised bone situations.

---

Maximum bone preservation.

---

Excellent esthetics.

PREVIEW

Ø 3.0 mm for  
limited spaces  
Launch in fall 2011



**It's called NobelActive.** The drilling procedure of this unique implant is designed to retain as much bone as possible, while the implant body and thread design condenses bone during insertion enhancing initial stability. The back-tapered coronal design and built-in platform shifting maximize alveolar bone and soft tissue volume, and the sharp apex and cutting blades enable you to adjust

the implant position for optimal restorative orientation. Together with the strong conical connection and a comprehensive prosthetic assortment, NobelActive allows you to achieve excellent esthetic results. After 45 years as a dental innovator we have the experience to bring you future-proof and reliable technologies for effective patient treatment. **Their smile, your skill, our solutions.**



Visit [nobelbiocare.com/nobelactive](http://nobelbiocare.com/nobelactive)

