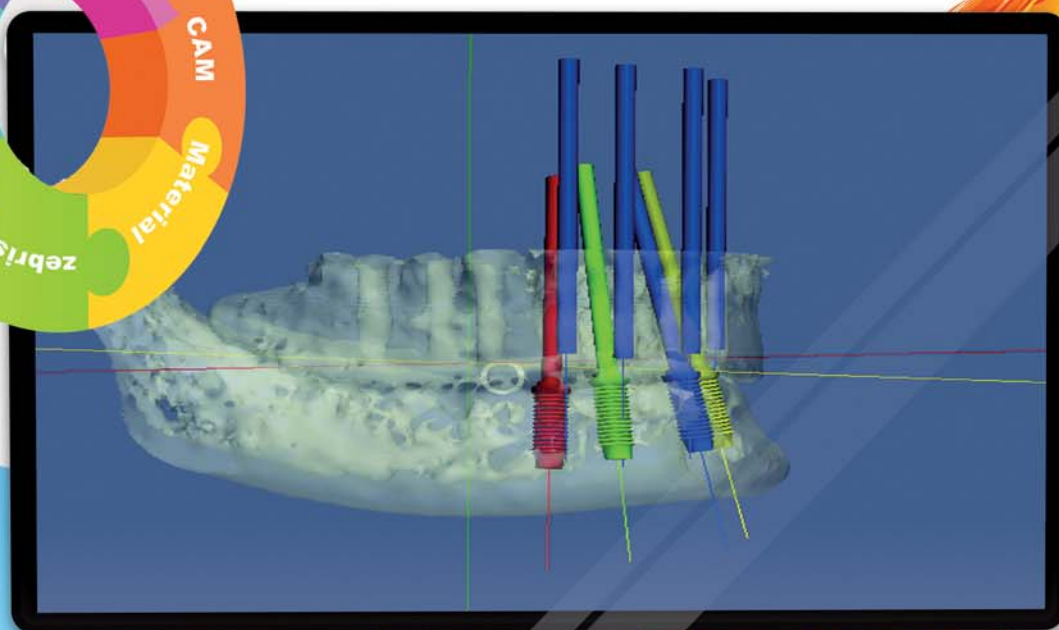


# implants

international magazine of oral implantology

4<sup>2011</sup>



## | clinical study

Flapless implant surgery and its effect on peri-implant soft tissue

## | case study

New concepts in computer-guided implantology

## | meetings

Implantology in Cologne

0277113

# More options, same original body.

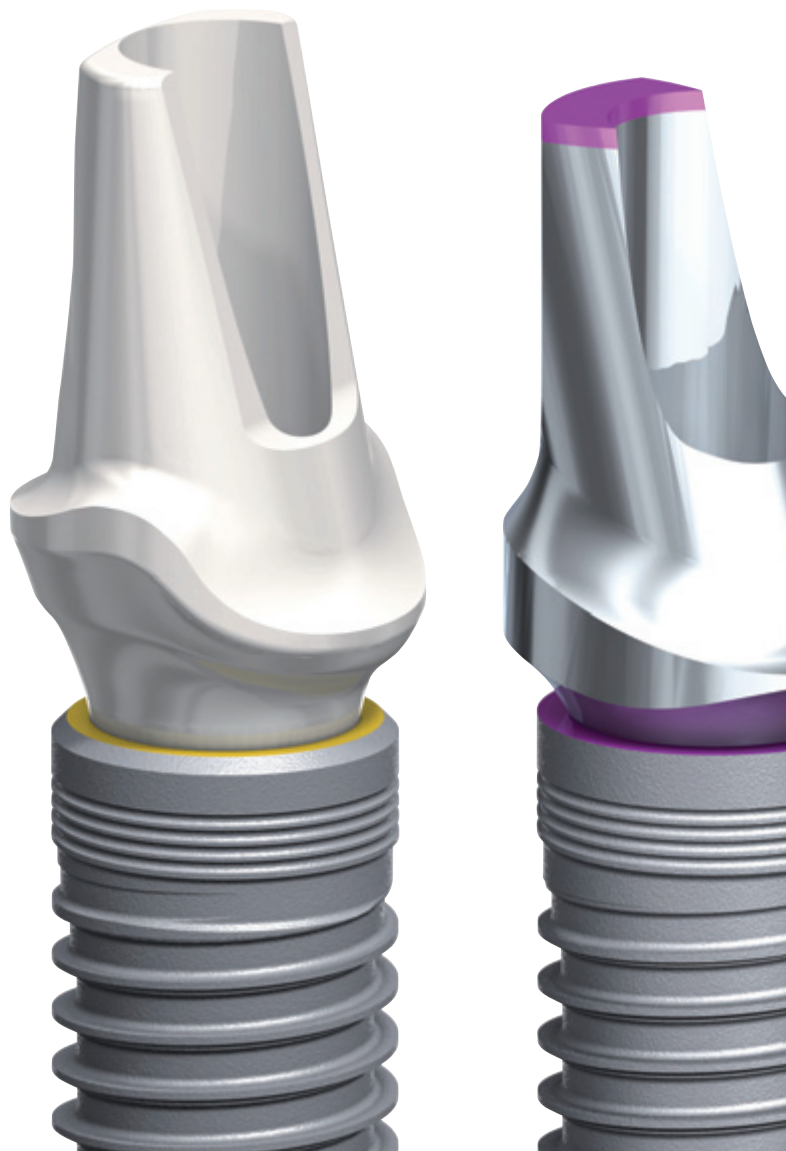
Two new connections  
to choose from.

Designed to maximize  
soft tissue volume.

Established and clinically  
proven tapered implant body.

NEW

With platform  
shift and conical  
connection



**They're called NobelReplace Conical Connection and NobelReplace Platform Shift.** Broaden your restorative options while keeping the benefits of the clinically proven NobelReplace Tapered implant, such as color-coded components and standardized step-by-step drill protocol for ease-of-use and predictable outcomes. Developed for restorations in the esthetic region, NobelReplace Conical

Connection combines platform shifting with a strong sealed connection, whereas NobelReplace Platform Shift offers platform shifting on the internal tri-channel connection with its unrivalled tactile feel. After 45 years as a dental innovator we have the experience to bring you future-proof and reliable technologies for effective patient treatment. **Their smile, your skill, our solutions.**



Visit [nobelbiocare.com/replaceccps](http://nobelbiocare.com/replaceccps)

