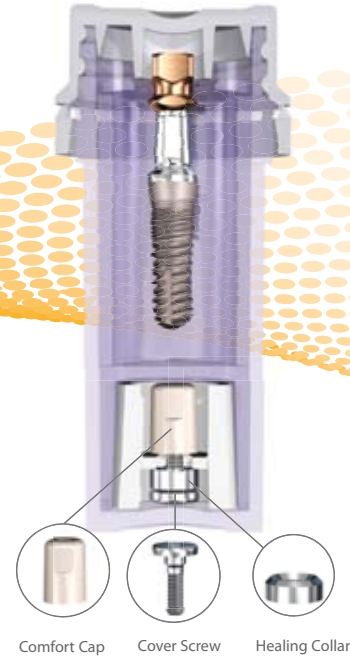
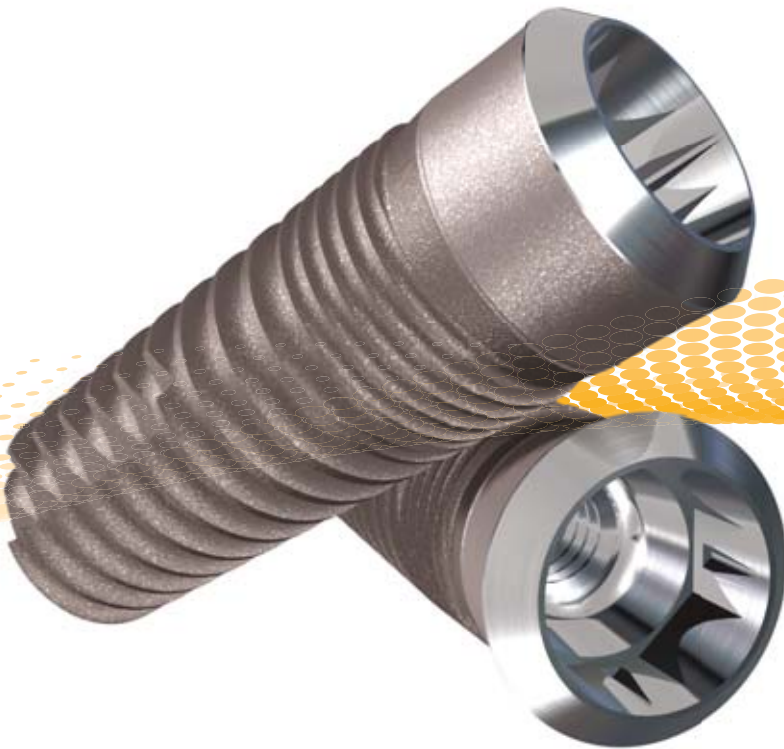


Designed For Success, Packaged For Value



SwishPlant™ Implant

All-in-One Packaging includes implant, straight abutment/transfer, cover screw & healing collar for only €145

Swish™ Implant System Advantages:

Internal Octagon (Niznick US Pat. #4,960,381 Licensed to Straumann)

Prosthetic compatibility with Straumann's Tissue-Level implants (Standard, Standard Plus and Tapered Effect)

Internal square broached in flats of octagon for fixture-mount engagement (Pat. Pend.)

Two Implant Designs & Packaging Options

Allows for selection based on price, packaging or thread design

SwishPlus™: €115 includes cover screw, healing collar & carrier compatible with Straumann tool & standard ratchet

- 1 2mm neck half textured for tissue-level or esthetic placement
- 2 Micro-grooves for improved tissue attachment & reduced stress
- 3 Progressively-deeper single-lead threads for increased surface area & complete surgical compatibility
- 4 Self-tapping groove for increased initial stability
- 5 Tapered apical end to initiate self-tapping

SwishPlant™: €145 includes cover screw, healing collar, comfort cap & straight abutment/transfer

- 1 2mm neck lightly textured for bone- or tissue-level placement
- 2 Micro-threads for improved tissue attachment, reduced stress & increased stability
- 3 Progressively-deeper double-lead threads for increased surface area & faster insertion
- 4 Self-tapping groove for increased initial stability
- 5 Tapered body for soft bone expansion

SwishPlus™

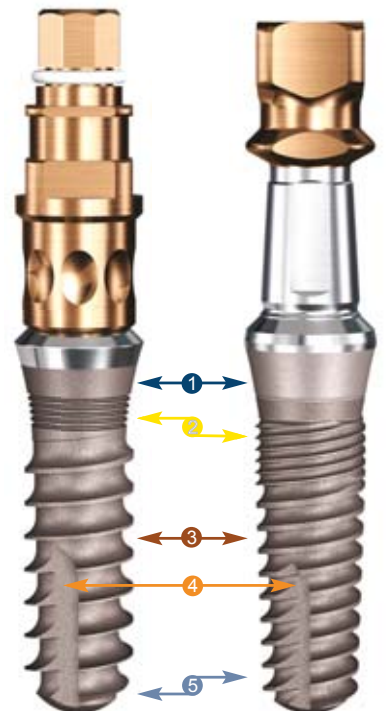
Straight with Micro-Grooves & Straumann Threads

SwishPlant™

Tapered with Micro-Threads & Double-Lead Threads



| | | | | | | | | | | | | | | | |
|-----------|--------------------|--------------------------|------------------|--------------------|----------------------|--------------|----------------------|-----------------------------|----------------------------|-----------------|-----------------|------------------------|--------------------------------|------------------------|----------------------|
| | Solid Abutment Kit | Straight Narrow Abutment | Straight Snap-On | Straight Contoured | 15° Angled Contoured | Gold/Plastic | Zirconia/Ti Abutment | Angled Zirconia/Ti Abutment | Plastic Temporary Abutment | Ball Attachment | GPS™ Attachment | Angled GPS™ Attachment | Multiple-Unit w/Cap & Transfer | Multiple-Unit Straight | Multiple-Unit Angled |
| Our price | €75 | €65 | €65 | €65 | €65 | €75 | €90 | €90 | €27.50 | €65 | €75 | €90 | €65 | €75 | €75 |



Intro Offer: Make the switch & receive a FREE implant²

All trademarks are property of their respective companies.
¹System Variation: 3.3mmD & 5.7mmD SwishPlus™ are tapered; 3.3mmD also has SwishPlant™ threads.
²Terms and conditions apply.

www.implantdirect.eu | 00800 4030 4030