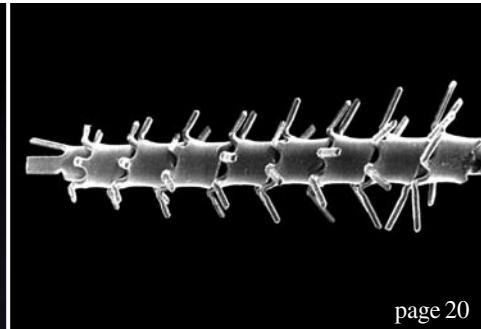




page 12



page 20



page 24

| editorial

- 03 To know **when** to do! To know **when** not to do!
| Dr Rolf Vollmer

| research

- 06 **Rehabilitation of** a complex case with **zirconium dental implants**
| Dr Andrea Enrico Borgonovo *et al.*
- 12 **Impression and registration** for full-arch **implant dentures**
| Dr Gregory-George Zafiropoulos
- 20 **Time-saving** debridement of implants with **rotating titanium brushes**
| Dr Dirk U. Duddeck *et al.*

| case report

- 24 **Immediate implantation** in the **anterior maxilla**
| Dr Nikolaos Papagiannoulis *et al.*

| industry report

- 28 **Fixed full arch metal-free prosthesis on four SHORT® implants**
| Dr Mauro Marincola *et al.*
- 32 **CAD/CAM-based restoration** of an **edentulous maxilla**
| Arnd Lohmann

| business news

- 36 **Conical internal connections** will fuel **growth** in dental **implant market**
| Dr Kamran Zamanian *et al.*

| news

- 38 **Manufacturer** News
- 48 **News**

| education

- 40 **Master of Oral Medicine in Implantology**
| DGZ
- 41 **Celebrating the Triumph of Osseointegration**
| Frederic Love

| meetings

- 35 **International** events 2012
- 42 **National Osteology Symposium** in Bonn
| Verena Vermeulen
- 44 **“Quality-oriented implantology”**
| DGZ

| about the publisher

- 50 | imprint



Cover image* courtesy of Implant Direct, www.implantdirect.com
Original Background: ©antishock
Artwork by Sarah Fuhrmann, OEMUS MEDIA AG.



page 28



page 32



page 42

Planmeca ProMax[®] 3D

Unique product family



Perfect sizes for all needs

3D X-ray • 3D photo • panoramic • cephalometric

Romexis[®] software completes 3D perfection



Digital perfection™

More information

www.planmeca.com

Planmeca Oy
Asentajankatu 6, 00880 Helsinki, Finland
tel. +358 20 7795 500, fax +358 20 7795 555
sales@planmeca.com

PLANMECA