

## | editorial

### 03 Dear **Reader**

| Dr So Ran Kwon, Co-Editor-in-Chief

## | special topic

### 06 The five-phase key to the Pros GPS: **Clinician's guide for porcelain laminate veneers**

| Dr Seok-Hwan Cho

### 14 **On smile design:** Conservatively placed IPS d.SIGN veneers to correct a diastema

| Harald Heindl & Dr Stephen Phelan

### 18 **Lithium disilicate**—An effective solution for aesthetically demanding indications

| Dr Igor Ristić

## | research

### 22 Dentine hypersensitivity: **Simplified**

| Dr Fay Goldstep

## | case report

### 26 **Aesthetics and function:** Orthodontic–surgical collaboration as a key to success

| Drs Martin Jaroch & Friedrich Bunz

### 32 **Ethical smile design** with the **Inman Aligner**— A case study

| Dr Andrew Wallace

## | industry news

### 36 **CLEARFIL S<sup>3</sup> BOND PLUS:** High-tech and high speed for high performance

| Kuraray

## | news

### 38 **Mission:** Passion, ethics and professionalism

| Letter from Dr Luca L. Dalloca, new President of ESCD

## | meetings

### 40 International **Events**

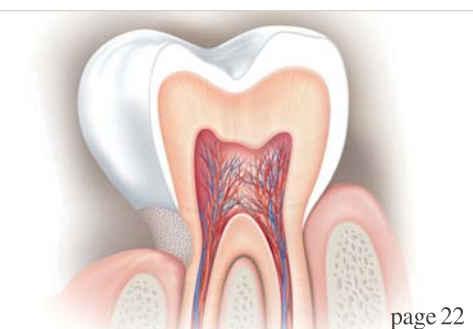
## | about the publisher

### 41 | submission guidelines

### 42 | imprint



Cover image courtesy of  
BestPhotoStudio.



# Dental Tribune for iPad – Your weekly news selection

Our editors select the best articles and videos from around the world for you every week. Create your personal edition in your preferred language.

[ipad.dental-tribune.com](http://ipad.dental-tribune.com)

