

The same-day tooth: From the diagnosis to the final restoration

Author_Dr Stefanos G. Kourtis, Greece

_Introduction

The restoration of missing anterior teeth is both a challenging task for the clinician and a stressful treatment for the patient. The final aesthetic result is of major importance—for the patient, dentist and dental technician. Moreover, the patient has high expectations, aesthetic demands and concerns about the cosmetic result of the final restoration. Even before treatment is started, the patient is usually concerned about the final outcome, as well as the provisional restoration used during osseointegration. The aim of this case report is to

present the clinical stages of rehabilitation of a central incisor from diagnosis to final restoration.

_Case presentation

A 29-year-old female patient without any apparent contributory medical history presented for treatment. The patient complained about the aesthetic appearance of the anterior maxillary region. The right central incisor appeared elongated, showed increased mobility (Grade I+) and was sensitive to palpation. The gingival margin of this tooth showed signs of infection, both labially and

Fig. 1_Initial clinical situation.

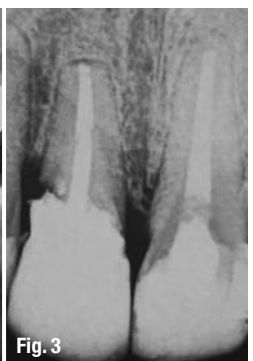
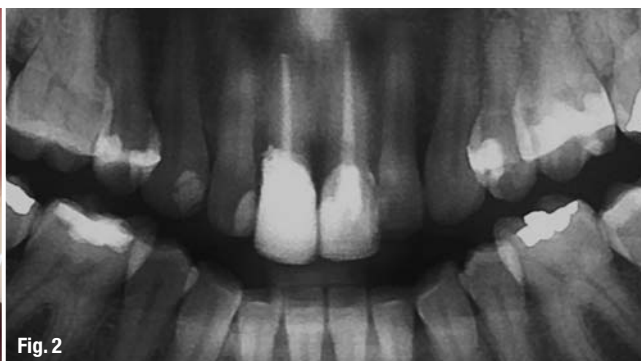
Fig. 2_Initial radiographic situation.

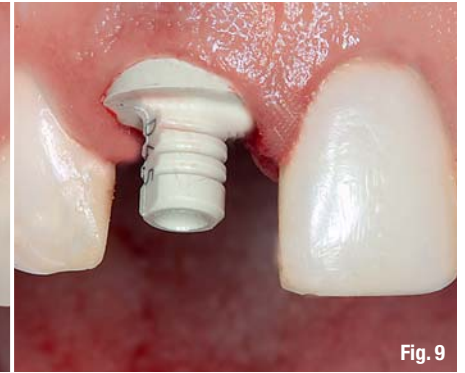
Fig. 3_Detailed X-ray examination.

Fig. 4_Periodontal fibres cut by utilising a periosteal elevator.

Fig. 5_Atraumatic tooth extraction.

Fig. 6_The horizontal root fracture was evident on the extracted tooth.





palatally. Hence, its periodontal conditions differed evidently from those of the remaining dentition. The left central incisor was discoloured and had extensive composite resin restorations with inadequate fit at the margins (Fig. 1).

A possible tooth or root fracture was suspected. The patient was asked about recent injuries or trauma to the maxillary region, and she reported a traffic accident six months previously. After this incident, both incisors showed extreme sensitivity and were treated endodontically. Radiographic examination with panoramic and intra-oral X-rays revealed a root fracture of the right central incisor

2 mm below the cemento-enamel junction (Figs. 2 & 3). The tooth had a poor prognosis and needed to be extracted. In contrast, the left central incisor showed no signs of root fracture. The treatment plan included the extraction of tooth #11, an immediate implant placement and the use of an immediate provisional. In addition, the prosthetic rehabilitation of the natural tooth #21 completed the rehabilitation. All-ceramic crowns were selected as the final restorations for the two central incisors at the end of the osseointegration period of the implant.

The patient had a high smile line and was extremely concerned about her aesthetic appearance

Fig. 7 _ Immediate placement of a XIVE S plus implant.
Fig. 8 _ Final position of the implant.
Fig. 9 _ Insertion of an EsthetiCap provisional abutment.

AD

implants

international magazine of oral implantology

One issue free of charge!

You can also subscribe via www.oemus.com/abo



Subscribe now!

I hereby agree to receive a free trial subscription of **implants international magazine of oral implantology** (4 issues per year). I would like to subscribe to **implants** for € 44 including shipping and VAT for German customers, € 46 including shipping and VAT for customers outside of Germany, unless a written cancellation is sent within 14 days of the receipt of the trial subscription. The subscription will be renewed automatically every year until a written cancellation is sent to OEMUS MEDIA AG, Holbeinstr. 29, 04229 Leipzig, Germany, six weeks prior to the renewal date.

Reply via Fax +49 341 48474-290 to OEMUS MEDIA AG or per E-mail to grasse@oemus-media.de

Last Name, First Name

Company

Street

ZIP/City/Country

E-mail

Signature

Notice of revocation: I am able to revoke the subscription within 14 days after my order by sending a written cancellation to OEMUS MEDIA AG, Holbeinstr. 29, 04229 Leipzig, Germany.

Signature



CDE 4/12





Fig. 10 Implant-supported, screw-retained provisional restoration.
Fig. 11 Clinical situation one week post-implant placement.
Fig. 12 Corresponding X-ray.
Fig. 13 Occlusal view of the soft-tissue contour at the end of osseointegration.
Fig. 14 Facial view of the soft-tissue contour at the end of osseointegration.
Fig. 15 Impression coping customised in the cervical area to match the emergence profile of the provisional crown.

at all stages of the treatment. Before the start of the surgical treatment, initial impressions were taken with alginate. Study models were fabricated based on these and then mounted on a semi-adjustable articulator. A detailed wax-up was made for tooth #11 and a provisional crown was fabricated from heat-polymerised acrylic resin. The provisional crown was trimmed at the interior surfaces for use with a provisional implant abutment.

The periodontal fibres surrounding tooth #11 in the alveolar socket were loosened with a periosteal elevator (DENTSPLY Implants) and the tooth was extracted atraumatically (Figs. 4 & 5). The horizontal fracture of the root below the cervical area of the extracted tooth verified the initial diagnosis (Fig. 6). The socket walls were considered intact and inspection revealed no signs of fenestration. Any residual fibres were scraped off. The implant site was then prepared according to the manufacturer's guidelines and a XIVES plus implant (DENTSPLY Implants; 4.5x11 mm) was inserted with sufficient initial stability, which was mainly achieved on the palatal side of the implant site. The implant collar was placed 3 mm below the cemento-enamel junction of the adjacent teeth (Figs. 7 & 8).

The titanium TempBase abutment, which acted as the placement head, was removed from the implant and an EsthetiCap plastic abutment (both DENTSPLY Implants) was fitted on the implant (Fig. 9). The design of this anatomically shaped abutment supports the soft tissue and interdental papillae adequately. Furthermore, it enables the creation of

a suitable emergence profile from the moment of implant placement. The highly polished surfaces prohibit accumulation of dental plaque and facilitate oral hygiene. At this stage, soft-tissue support is crucial for achieving an aesthetic result for the provisional restoration and maintaining it to the final stage.

The previously fabricated provisional crown was fitted on the abutment with autopolymerised acrylic resin, maintaining the access hole on the palatal aspect for the fixation screw (Fig. 10). Furthermore, the outer contour of the provisional crown was checked repeatedly to ensure support of the gingival margin without excessive pressure, which could lead to tissue shrinkage. The provisional crown was designed 1 mm shorter than tooth #21 to avoid possible occlusal loading at maximum intercuspation or side movement (Fig. 11). The implant position in the socket and the abutment fit were checked radiographically (Fig. 12).

The osseointegration period of four months was uneventful and the soft tissue around the implant did not exhibit any signs of inflammation. The interdental papillae were maintained in shape, height and volume (Figs. 13 & 14). In order to support the soft tissue around the implant for impression taking, a prefabricated impression coping was customised using photopolymerised low-viscosity composite material (Figs. 15 & 16). For this implant, an all-ceramic prefabricated zirconium CERCON abutment (DENTSPLY Implants) was selected. This abutment offers adequate soft-tissue support and a suitable



Academy of Osseointegration *28th Annual Meeting*

March 7-9, 2013

Tampa Convention Center • Tampa, Florida



Moving Forward: Evidence, Experience, Excellence

- **Opening Symposium: *Quality Evidence – Quality Treatment – Quality Outcomes***
Featuring: Edward Alan; Daniel Buser; Lyndon Cooper; Richard Roblee; Clark Stanford & Robert Winter
- **36 Corporate Forum Presentations**
- **Commercial Exhibits**
- **Emerging Treatment Option Sessions (New)**
- **Limited Attendance Lectures**
- **Lunch and Learn Presentations**
- **Poster Presentations**
- **Round Table Clinics**
- **Restorative & Surgical Tracks**
- **Social Events**
- **Treatment Approaches**
- **Closing Symposium: *Where Are We Today and What Does the Future Hold?***
Featuring: Urs Belser; David Garber; Joseph Kan; Henry Salama; Maurice Salama; & William Scarfe



osseo.org



ADA CERP® | Continuing Education
Recognition Program



Fig. 16_ Impression for the prepared natural tooth and the XiVE S plus implant.

Fig. 17_ All-ceramic crown and corresponding implant abutment (CERCON).

Fig. 18_ Try-in of the modified ceramic CERCON abutment.

Fig. 19_ Final clinical result: buccal view of the implant restoration.

Fig. 20_ Buccal view of the restored natural tooth.

Fig. 21_ Radiographic control at one year post-implant placement.

emergence profile for the crown (Figs. 17 & 18). The use of ceramic abutments prevents discoloration in the gingival area even when the soft tissue is thin. Two porcelain crowns were fabricated to the desired shape and colour (Figs. 19 & 20). The final result fulfilled the patient's aesthetic demands and her initial insecurity dissolved after the insertion of the implant and the provisional restoration. The hard- and soft-tissue condition around the implant was stable at the one-year recall (Fig. 21).

Discussion and conclusion

Implant placement subsequent to tooth extraction in conjunction with the use of provisionals in the anterior maxillary region is certainly challenging for the dental practitioner. However, this treatment modality offers several advantages, including reduced clinical time, a single local anaesthetic injection, a flapless procedure and immediate placement of the implants. From the patient's point of view, the immediate incorporation of a fixed implant-supported provisional restoration is very acceptable and even requested. With the clinical procedure described here, both dentist and patient can evaluate the aesthetics of the restoration. Soft-tissue support is enhanced and achievement of the desired result is facilitated. With initial implant stability, proper tissue management and correct use of the available implant components, a predictable aesthetic result can be produced. On the other hand, occlusal control, oral hygiene and a regular recall programme should be considered prerequisites for maintaining a long-lasting restoration.

Single-tooth implants have shown high success rates in both the anterior and the posterior regions of the maxilla and the mandible.¹⁻⁴ Immediate post-extraction implant placement has been done since the early years of the clinical application of implants with very good clinical outcomes.⁵⁻⁸ Decisive factors for immediate implant placement are lack of infection in the periodontal tissues and an intact tooth socket. Immediate incorporation of a temporary restoration has been presented in the literature with most encouraging results.⁷⁻¹⁴ Although clinical experiences have advocated this clinical technique for many years, more extended long-term clinical studies are necessary to prove the efficacy of the method and establish a stable clinical protocol.

Editorial note: A complete list of references is available from the publisher.

contact

cosmetic
dentistry

Dr Stefanos Kourtis

Dept. of Prosthodontics, University of Athens
Plaza Chrys. Smyrnis 14
17121 Athens
Greece

Tel.: +30 21 0 935 7306

stefkour@dent.uoa.gr



2013
中国口腔种植年
Year of Oral
of Implantation

2013
CDS
China Dental Show



The 15th CSA Annual Meeting & 2013 China Dental Show

2013·Shanghai

Shanghai Everbright Convention & Exhibition Center

15th–18th Aug 2013

主承办单位
Organizer
协办单位
Co-organizer
支持单位
Supported By



中华口腔医学会



通过ISO9001质量体系认证

国药励展



上海市口腔医学会



美国商务部

Contact us:

Germany and Austria
Ms. Rahel Hilker
Reed Exhibitions GmbH
Tel: +49 211 55 628 521
Fax: +49 (0) 211 55 62 31
E-mail: rahel.hilker@reedexpo.de

Japan
Ms. Keiko Itai
Reed Exhibition ISG Japan
Tel: +81 (0) 3-5575-7510
Fax: +81 (0) 3-5575-0440
E-mail: itaik@reedexpo.co.jp

Korea
Ms. Cui Yinxia
Sinoseoul Co., Ltd.
Tel: +82 2 6370 8850
Fax: +82 2 6371 8004
E-mail: yinxia@seline.co.kr

United States and Canada
Mr. David Thomas
International Sales Group USA
Tel: +1-203-840-5420
Fax: +1-203-840-9420
Email: dthomas@reedexpo.com

Taiwan
Ms. Angel Su
Formosa Cultural Corporation
Tel: +886-2-82273269
Fax: +886-2-82273269
E-mail: angel@fmh.com.tw

Other countries and regions
Mr. Gu Ying
Reed Sinopharm Exhibition Co., Ltd.
Tel: +86-10-84556603
Fax: +86-10-82022922
E-mail: ying.gu@reedsinopharm.com

www.ChinaDentalShow.com