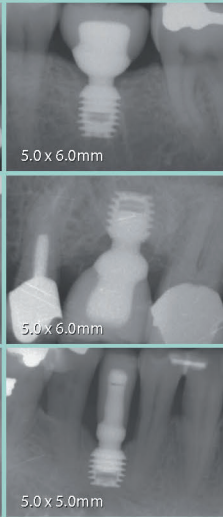
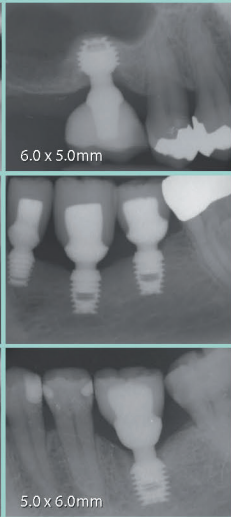
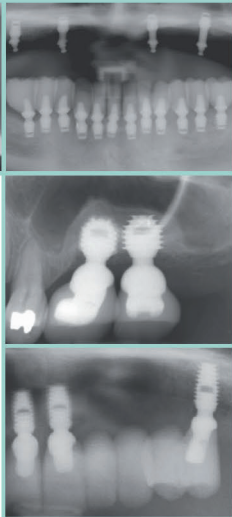
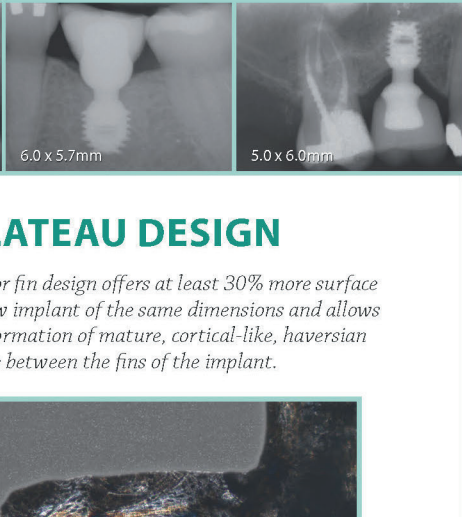
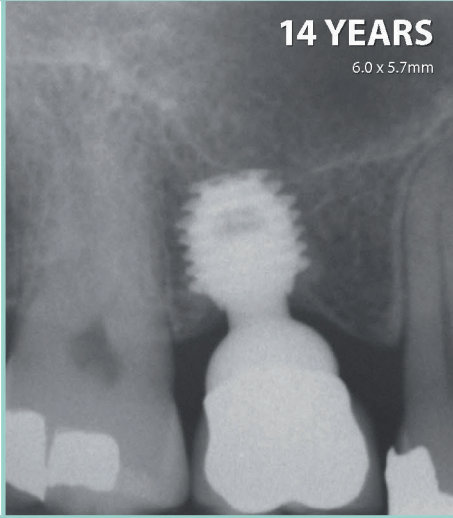


6.0 x 5.7mm
14 YEARS

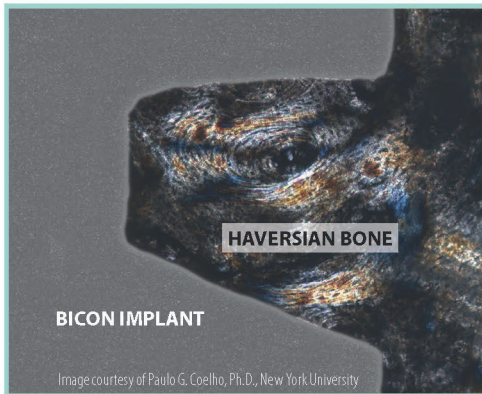
28
YEARS OF CLINICAL USE
SINCE 1985

**SHORTEST IMPLANTS
LONGEST HISTORY**

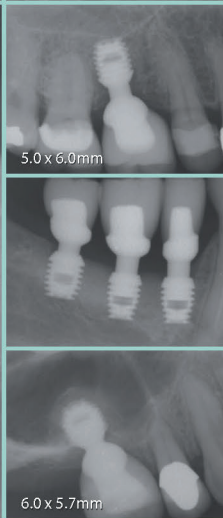
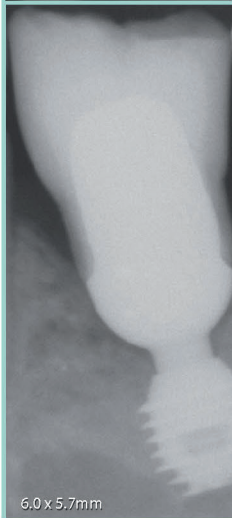
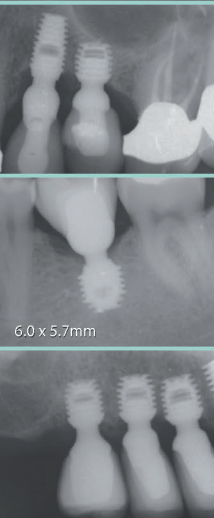


PLATEAU DESIGN

Bicon's plateau or fin design offers at least 30% more surface area than a screw implant of the same dimensions and allows for the callus formation of mature, cortical-like, haversian bone between the fins of the implant.



THE BICON DESIGN is driven by simplicity. A cornerstone of its simplicity is SHORT® Implants. When the Bicon system was first introduced in 1985, its 8.0mm length implants were considered quite short—most other implants were at least 12–14mm and sometimes 18–20mm long! Since then, the natural progression of Bicon's design philosophy has resulted in 5.0mm, 5.7mm, and 6.0mm SHORT® Implants, all with proven clinical success.



bicon[®]
DENTAL IMPLANTS

**SHORTEST IMPLANTS
LONGEST HISTORY**

SHORT[™]
IMPLANTS

www.bicon.com/shortimplants