

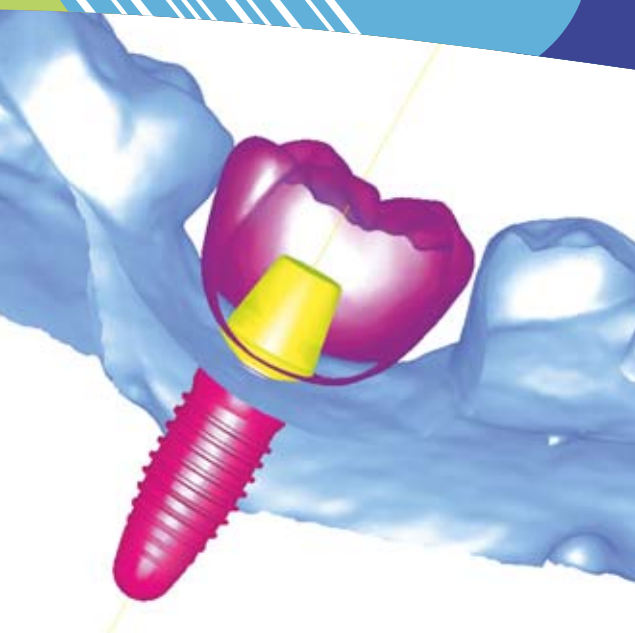
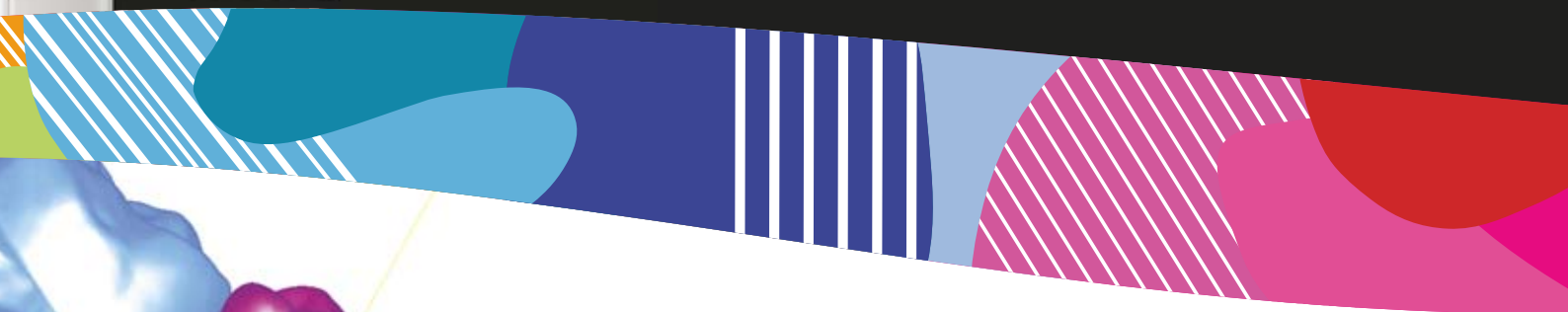
Planmeca ProMax[®] 3D

Planmeca Romexis[®]

Implant planning made easy



**3X
3D**



Planmeca Romexis[®] 3D Implant Planning software offers the most sophisticated tools for the needs of modern implantology.

- Superimpose surface scan on to CBCT data
- Use crown library or import patient-specific crown from CAD system
- Position the implant using realistic implant and abutment libraries
- Verify the implant plan with verification tool
- Order surgical guide directly from the software

Find more info and your local dealer
www.planmeca.com

PLANMECA

