



| editorial

03 How many **scientists fabricate** and **falsify research**?  
| Dr Rolf Vollmer

| research

06 Maximal **aesthetics** in the **periodontally** compromised anterior maxilla  
| Dr Nikolaos Papagiannoulis *et al.*

10 **Ridge augmentation** for an **atrophied posterior mandible** using NanoBone block  
| Dr Omar Soliman *et al.*

| case report

16 Comprehensive **prosthetic** restoration  
| Michael Peetz *et al.*

| industry report

20 **Jawbone cavitation** and its **implication** in implant **dentistry**  
| Prof. Dr Mauro Marincola

24 **Immediate implantation** and **full-ceramic restoration** in the **maxillary anterior region**  
| Dr Arndt Happe *et al.*

32 Influence of **implant design** on **osseointegration**  
| Dr R. Fromental *et al.*

| interview

40 **The time** has come  
| Interview by Jürgen Isbaner

42 **Short implants**  
| An interview with Prof. Dr Christoph Hammerle, Switzerland

| meetings

44 **International implantology** in Berlin

46 More than **500** attend **ISOI** annual meeting in **Tokyo**  
| Dr Rolf Vollmer

| news

36 **Manufacturer** News

49 **News**

| about the publisher

50 | imprint



Cover image courtesy of  
BEGO Implant Systems GmbH & Co. KG  
[www.bego-implantology.com](http://www.bego-implantology.com)  
Original Background: ©Click Bestsellers  
Artwork by Sarah Fuhrmann, OEMUS MEDIA AG.



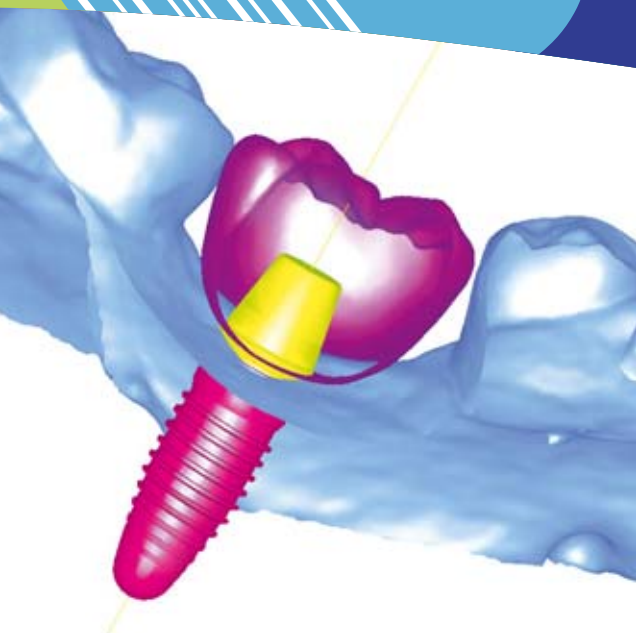
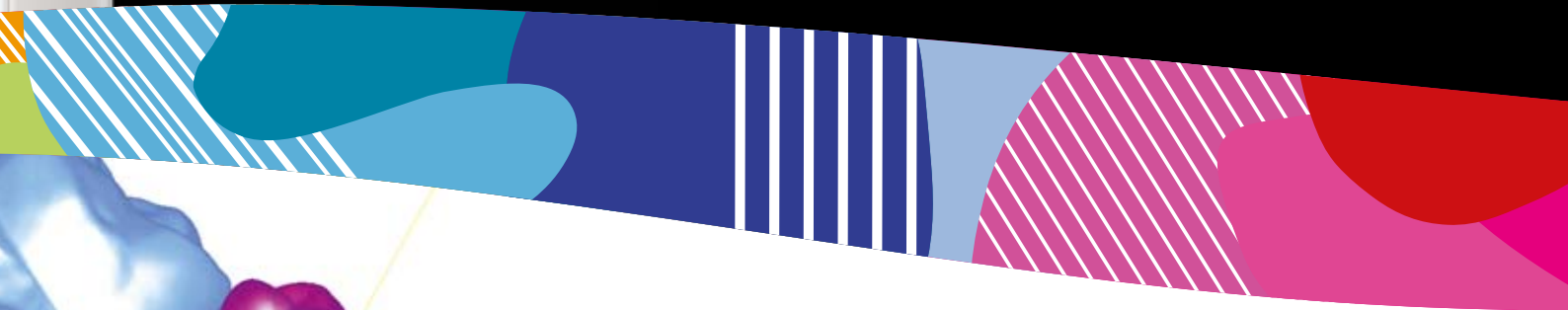
Planmeca ProMax® 3D

Planmeca Romexis®

# Implant planning made easy



**3X  
3D**



**Planmeca Romexis® 3D Implant Planning** software offers the most sophisticated tools for the needs of modern implantology.

- Superimpose surface scan on to CBCT data
- Use crown library or import patient-specific crown from CAD system
- Position the implant using realistic implant and abutment libraries
- Verify the implant plan with verification tool
- Order surgical guide directly from the software

Find more info and your local dealer  
[www.planmeca.com](http://www.planmeca.com)

**PLANMECA**

