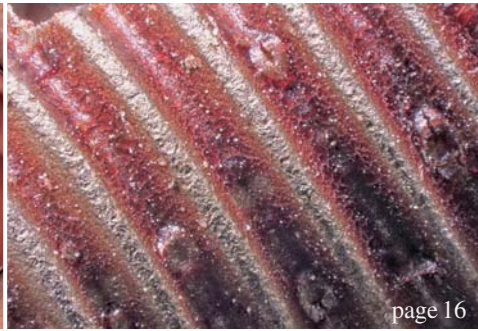




page 6



page 16



page 24

| editorial

03 **Dear readers**

| Dr Rolf Vollmer

| research

06 **Implant planning** affects periimplant diseases

| Rainer Buchmann *et al.*

| case report

16 **Quality of implant surfaces** and poor osseointegration—Part II

| Dr Nikolaos Papagiannoulis *et al.*

24 **Mandibular body reconstruction** with a 3-D printed implant

| Dr Saeid Kazemi *et al.*

28 **Simplifying implantation** in socket and ridge preservation

| Martin Keweloh *et al.*

34 **Immediate loading** with dynamic navigation implant surgery

| Dr Jan D'haese *et al.*

| industry

42 **Implant design** of the future

| Georg Isbaner

| events

44 **UNAM Congress opens in Mexico City**

46 **EuroPerio in London**

| Georg Isbaner

48 **“Dental technology and implantology—Interface to success”**

| DGZ

| news

38 **Manufacturer News**

49 **News**

| about the publisher

50 | imprint



Cover image courtesy of Straumann GmbH
www.straumann.de



page 34



page 42



page 46



bicon®

DENTAL IMPLANTS

Since 1985 » Simple. Predictable. Profitable.



SHORT™ IMPLANTS

