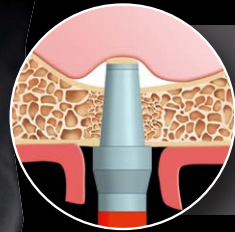
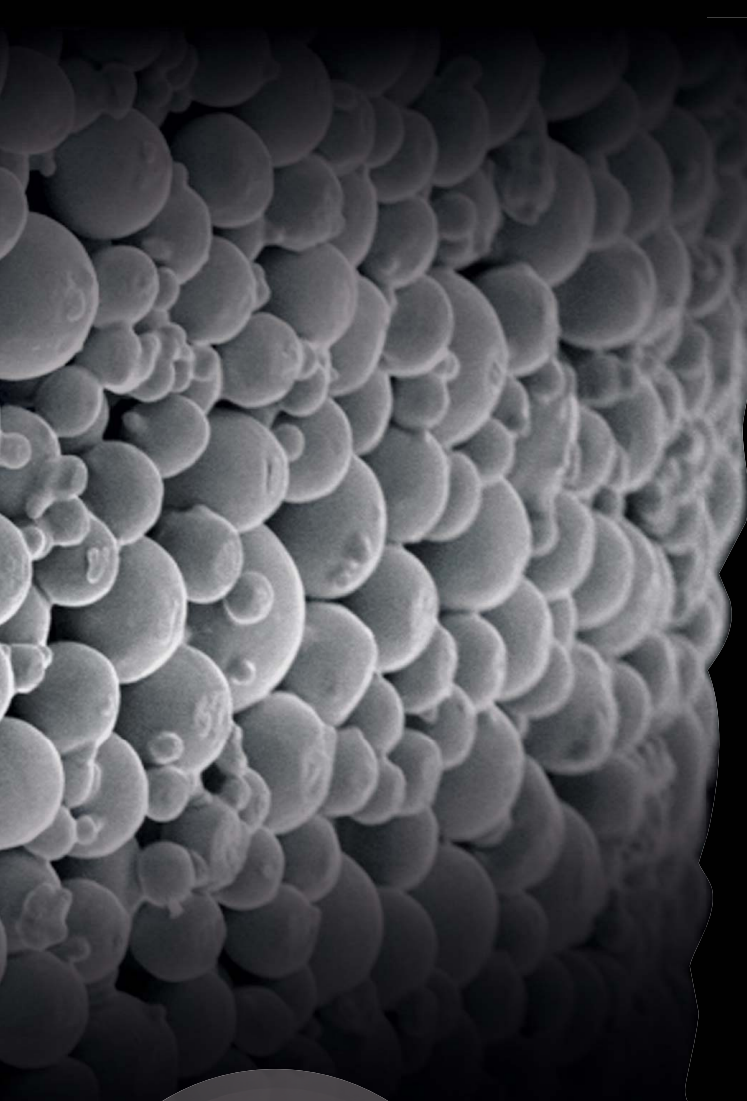


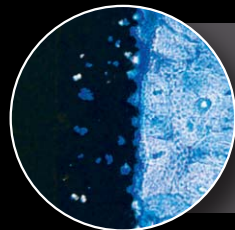
# OT-F<sup>3</sup> – Kurzes Press-Fit Porenimplantat für die implantologische Herausforderung



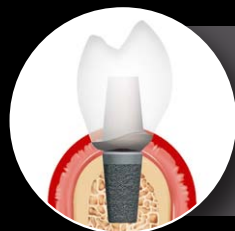
Schneidende Osteotome ermöglichen minimalinvasiven internen Sinuslift



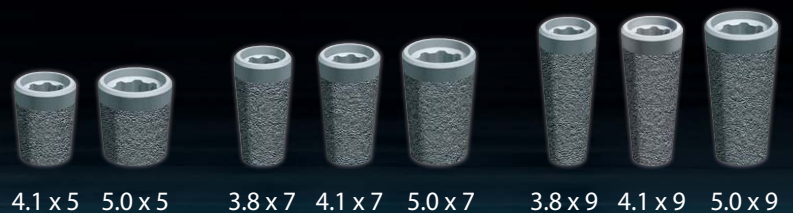
Implantatbett-Präparation mit schneidenden Bohrern oder komprimierenden Osteotomen



3-dimensionale Osseinkorporation



Spezielle Oberflächentopographie erlaubt Kronen-Wurzel-Verhältnis von 2:1



4.1 x 5   5.0 x 5   3.8 x 7   4.1 x 7   5.0 x 7   3.8 x 9   4.1 x 9   5.0 x 9