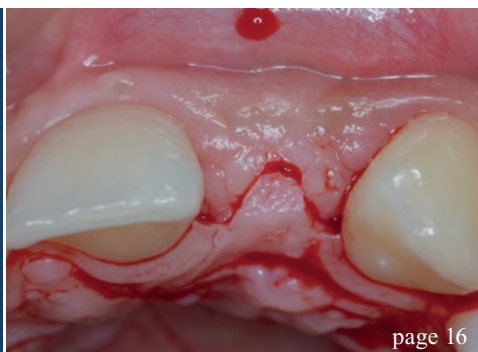
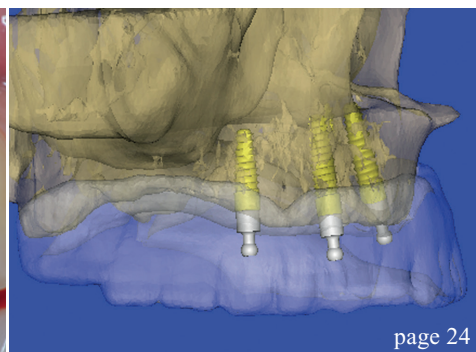




page 6



page 16



page 24

| editorial

- 03 Exploring **new grounds**
Dr Rolf Vollmer

| research

- 06 Basic **evaluation** of an **antimicrobial** gel for **peri-implantitis** treatment
Dr Georg Bach & Christian Müller
- 16 **Lateral maxillary incisor** implant—
Key issues for **aesthetic success**
Drs Philippe Russe & Patrick Limbour
- 24 Maxillary **implant** supported removable or fixed **prostheses**
Dr Scott D. Ganz

| case report

- 30 The **indispensable** use of CBCT in the posterior mandible
Souheil Hussaini

| industry

- 36 **Automatic** crestal **sinus lift** by motorised impaction device
Dr Georges Khoury & Dr Marc Revise

- 40 For a healthy start, **always** use a **new** healing abutment
Dr Chandur Wadhvani & Steve Hurson

- 42 **Introducing** NucleOSS

| events

- 46 Where innovation comes to **life**

| news

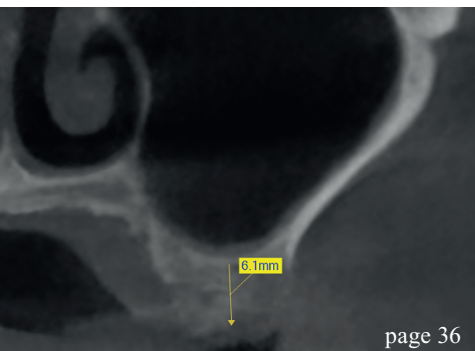
- 44 **manufacturer news**
- 48 **news**

| about the publisher

- 50 **imprint**



Cover image courtesy of NucleOSS
www.nucleoss.com



page 36



page 40



page 46

Implant planning made easy

Planmeca PlanScan®

Planmeca ProMax® 3D

3x
3D

Planmeca Romexis® software offers a completely integrated and digital workflow for modern implantology. From intraoral scanning to easy prosthetic design and realistic implant libraries, the most sophisticated implant planning tools are just a few clicks away.

- All the scanned and design data for prosthetic works is immediately available and can be mapped with the patient's CBCT data
- Use crown library or patient-specific crown from CAD system
- Verify the implant plan with verification tool
- Order surgical guide directly from the software
- Share data easily with partners through **Planmeca Romexis® Cloud** image transfer service



Find more info and your local dealer

www.planmeca.com



Planmeca Oy Asentajankatu 6, 00880 Helsinki, Finland. Tel. +358 20 7795 500, fax +358 20 7795 555, sales@planmeca.com

PLANMECA