

CAMLOG

Comfortable for both user and patient

COMFOUR™ is CAMLOG's new system for occlusally screw-retained restorations in edentulous or partially edentulous jaws. Due to its many technical highlights, COMFOUR™ allows the realisation of several treatment concepts, such as occlusally screw-retained bridges for immediate and delayed restorations, as well as bar and single-tooth restorations on straight and angled bar abutments. Locator® abutments screwed on straight or angled bar abutments offer further treatment options within the COMFOUR™ System. They are used to stabilise an overdenture under chewing pressure, horizontal shear forces and tilting movements. The COMFOUR™ abutment system is available for the CAMLOG® and CONELOG® implant system.

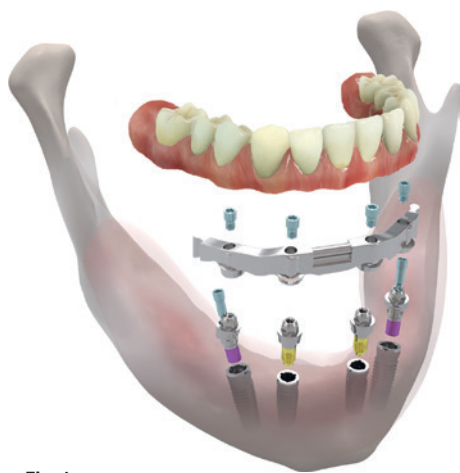


Fig. 1

Fig. 1: COMFOUR™ restoration in the mandible on four interforaminal inserted implants with milled DEDICAM bars.

COMFOUR™ offers a range of options to master the challenges in practice routine easier and with less time. The COMFOUR™ Abutments excel through their versatility and slim design. All components are of delicate and compact design, which simplifies prosthetic restorations considerably for dentists and dental technicians and increases the wear comfort for patients.

CAMLOG Biotechnologies AG
Margarethenstr. 38
4053 Basel, Switzerland
www.camlog.com

Dentsply Sirona

Dentsply Sirona acquires MIS Implants



Dentsply Sirona announced a definitive agreement to acquire all of the outstanding shares of privately held MIS Implants Technologies Ltd., Barlev (Israel), a dental implant systems manufacturer headquartered in northern Israel. The agreement opens up many new opportunities of growth and services for both parties, which benefits customers and patients around the globe.

For over 30 years, Dentsply Sirona has accumulated unique industry knowledge and experience in the field of dental implants. The basis for this is a thorough scientific approach and dedication to long-term clinical evidence. To achieve perfect results, clinicians need predictable solutions.



Dentsply Sirona delivers individual and strongly tested products for every stage of implant therapy. The addition of MIS, a leading value implant company, will extend the range of therapy concepts to additional market segments. The company has a strong presence in the value segment, selling its products in more than 65 countries worldwide. MIS (Make It Simple) aims to simplify implant dentistry through innovation and clinical education.

Dentsply Sirona Global Headquarters
Susquehanna Commerce Center
221 W. Philadelphia Street
Suite 60W
York, PA 17401, USA
www.dentsplysirona.com

NucleOSS

Effective treatment Solutions

NucleOSS Dental Implant is a user friendly system that offers effective solutions for dentistry with high-quality and user friendly products. Therefore, the modern design of the new T6 implant is based on tissue management. The NucleOSS T6 Implant is produced of reinforced GR4 pure titanium which is 30% more durable. The deep and straight internal design provides equal distribution of the forces accumulated around the neck zone to abutment and metric screw. Two angled abutment-implant contact surfaces are positioned at different levels. This secondary barrier is a design feature for additional safety. The internal bevel provides a distinct platform-switch effect. Double thread and reverse buttress design of the NucleOSS T6 implant allows for easier insertion, which prevents stress.

The unique and clinically tested surface, with its macro-surface anatomy, provides full osseointegration to the bone. The Maxicell® surface has been

proven as a residual-free surface by an independent German science institution. The wide range of superstructures provides alternative solutions for all type of prosthetic treatments with three different prosthetic platform options (4.3/5.0/6.0). For more information about our company and products, please visit us at EAO Congress/Paris, at the booth S03A from 28 September to 1 October 2016.

NucleOSS Europe GmbH
FloBhafenstr. 6
41460 Neuss, Germany
www.nucleoss.com

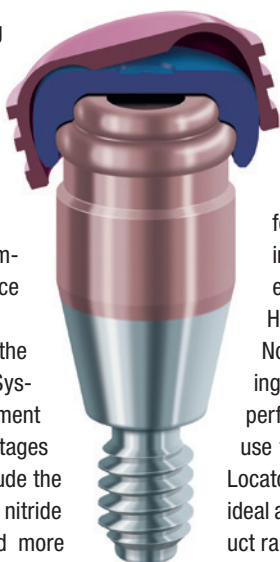


Nobel Biocare

New attachment system enhances edentulous solutions

Nobel Biocare is further advancing its comprehensive product range for edentulous treatment with the Locator R-Tx™ Removable Denture Attachment System. Locator R-Tx™ was officially launched for Nobel Biocare implants at the company's Global Symposium in New York, which took place June 23–26, 2016.

Locator R-Tx™ is an evolution of the successful Locator® Attachment System. This next-generation attachment offers clinicians a number of advantages versus its predecessor. These include the new DuraTec™ titanium carbon nitride coating. DuraTec™ is harder and more wear-resistant than the nitride coating of the legacy Locator® and is designed to reduce roughness. The Locator R-Tx™ system eliminates the need for pre-angled abutments. Its redesigned attachment housing can pivot up



to 30° over the seated Locator R-Tx™ nylon retention inserts, allowing up to 60° convergence or divergence between implants. The Locator R-Tx™ attachment system is available for Nobel Biocare implants with internal conical, tri-channel and external hex connection.

Hans Geiselhöringer, President, Nobel Biocare and Dental Imaging, said: "By combining improved performance, aesthetics and ease of use for both clinician and patient, the Locator R-Tx™ attachment system is an ideal addition to the Nobel Biocare product range."

Nobel Biocare Services AG
P.O. Box
8058 Zurich-Airport, Switzerland
www.nobelbiocare.com

Bioimplon

Hypro-Sorb® M Matrix

The Hypro-Sorb® M Matrix is a multilayer tissue matrix of pure, crystalline Atelo-Collagen Type I derived from the bovine Achilles tendon for GTR in periodontology and GBR in maxillofacial surgery. The Hypro-Sorb® M Matrix has a bacteriostatic effect; it supports rapid neovascu-

larisation and controlled soft-tissue integration and is a safe alternative to the patient's own tissue grafting material. In addition, the matrix has an excellent barrier function due to the solid collagen structure and long resorption time of six months after which it is completely remodelled into the patient's own tissue. Furthermore, it can be trimmed to the shape of the wound site which allows perfect adherence and positioning.

The Hypro-Sorb® M Matrix is made of 99.9 per cent Atelo-Collagen (telopeptides-free collagen) which ensures the highest degree of biocompatibility.

Bioimplon GmbH
Friedrich-List-Str. 27
35398 Giessen, Germany
www.bioimplon.de



Straumann

The solution for implant-borne full-arch restorations

Straumann® Pro Arch offers a safe, reliable and less complex treatment option for patients requiring full-arch treatments. Patients and clinicians benefit from the combination of the individualised prosthetics and the surgical advantages of the Straumann® SLActive® surface as well as the unique material properties of Roxolid®.



Straumann® Pro Arch is a fixed rehabilitation solution which encompasses the whole procedure from removal of hopeless teeth, immediate placement of four implants and immediate loading of the implants with a temporary bridge. It also includes the treatment planning steps before surgery and afterwards when converting the temporary bridge to the final full-arch prosthesis. Straumann® Pro Arch uses Straumann® Bone Level Tapered implants from Roxolid®—a unique metal alloy with biocompatibility and fatigue strength superior to titanium—and Straumann® SLActive®, a chemically modified hydrophilic surface which is proven by clinical evidence to accelerate the osseous healing.

Institut Straumann AG
Peter-Merian-Weg 12
4002 Basel, Switzerland
www.straumann.com