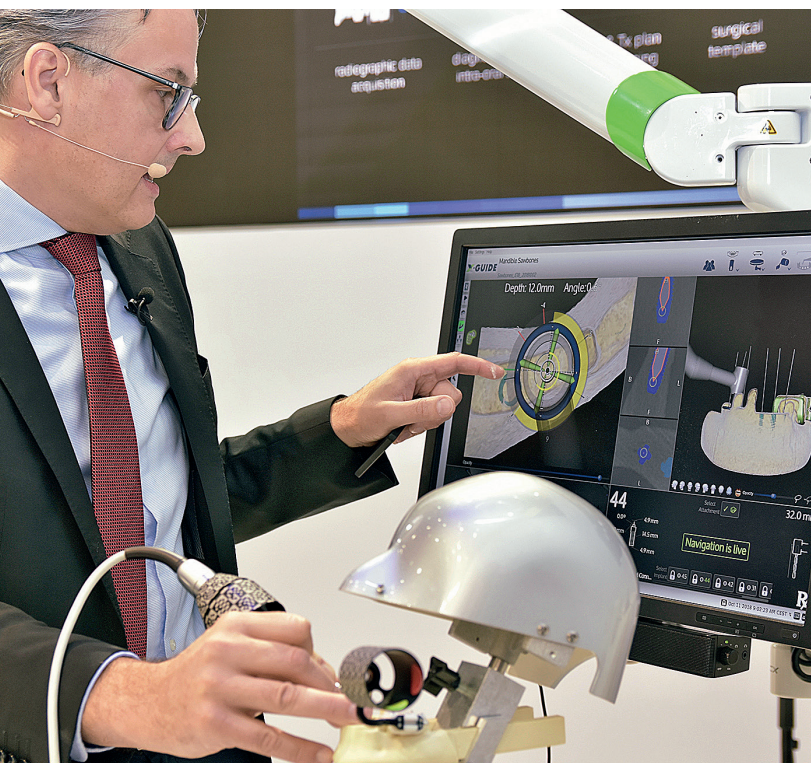


Nobel Biocare

## Dynamic navigation added to digital workflow



At the 2018 annual scientific meeting of the European Association for Osseointegration (EAO) in Vienna, Nobel Biocare announced the next step in its digital workflow. Being officially launched there for the European market, X-Guide offers a new treatment option for same-day surgery, with DTX Studio Implant (formerly NobelClinician) empowering this system for dynamic 3D navigation. This way, treatment plans from DTX Studio Implant can be instantly delivered to the patient, facilitating a workflow for diagnostics, implant planning and dynamically navigated implant surgeries. X-Guide then provides lag-free 3D intraoral guidance of the drill in real time. “With DTX Studio Implant and X-Guide, clinicians can achieve high precision shorter time-to-teeth treatments, including screw-retained provisionalisation with full three-dimensional control of their implant site preparation and dynamically monitored implant insertion,” Dr. Pascal Kunz, Vice President Product Management Digital Dentistry at Nobel Biocare said during the presentation at the company’s EAO booth. X-Guide is manufactured by X-Nav, an exclusive partner of Nobel Biocare.

**Nobel Biocare Services AG**  
**P.O. Box**  
**8058 Zürich, Switzerland**  
**[www.nobelbiocare.com](http://www.nobelbiocare.com)**

Straumann

## PURE Ceramic Implant System

Nothing is more winning than a light-hearted and happy smile. With the PURE Ceramic Implant System even very demanding patients can smile with confidence according to the principle “Discover natural PURE white. Love your smile.”

With this implant system, dentists can grant their patients the best aesthetic, natural and solid treatment. Patients will benefit from all the highly aesthetic advantages of a natural ceramic implant—ivory-coloured like a natural tooth root and even in cases of thin gingiva biotypes not shining through. No compromises on aesthetics, reliability or the most natural choice of material are necessary. Further they can rely on high-performance zirconia ceramic material being even stronger than the gold standard, grade 4 titanium implants.

The Straumann® PURE Ceramic Implant System is the result of more than 12 years of relentless research and development until the ceramic implants complied with the company’s premium quality standards. Swiss quality and precision, strength, clinical success and flexible treatment protocols are combined in an innovative solution that helps dentists meet the needs of their patients. Find out more at: [pure.straumann.com](http://pure.straumann.com).



**Institut Straumann AG**  
**Peter Merian-Weg 12**  
**4052 Basel, Switzerland**  
**[www.straumann.com](http://www.straumann.com)**

Zest Dental Solutions

## Newly improved attachment system

The LOCATOR R-Tx removable attachment system is the fourth generation of award-winning patient-removable attachment systems from Zest Dental Solutions. The new abutment coating is 30 per cent harder with over 25 per cent greater wear resistance, and nearly 65 per cent reduction in surface roughness. The narrower coronal geometry of the abutment and the dual engagement of the retention inserts on the outside of the abutment allow patients to easily align and properly seat their overdenture, decreasing potential deformation of inserts, which could lead to premature wear.

The system utilises the standard 0.050in/1.25mm hex drive mechanism and treats up to 30° of angle correction using a single set of redesigned retention

inserts with straightforward retention values: zero, low, medium, high. In addition, all of the necessary components for each individual case are shipped in one convenient vial.

LOCATOR R-Tx is a better, simpler, stronger attachment system and comes with a 100% Satisfaction Guarantee to prove it!



**Zest Dental Solutions**  
2875 Loker Avenue East  
92010 Carlsbad, CA, USA  
[www.zestdent.com](http://www.zestdent.com)



Anthogyr

## New material for customised prostheses

Anthogyr is now adding a new ceramic to its line of CAD/CAM customised prostheses: Sina ML. Highly durable (> 1,150 MPa), it requires no ceramisation and reduces the risk of chipping. This multi-layer zirconia combines strength, beauty, and biocompatibility for single and multiple implant- and tooth-supported prosthetic restorations.

With the new Sina ML available in seven shades, Anthogyr expands the line of zirconia in its catalogue, which includes Sina Z (opaque) and Sina T (translucent), each available in 16 shades.

In addition, angulated access is available on Simedax® customised prostheses with an integrated inLink® connection in three different materials: medical grade V titanium, cobalt-chromium and zirconia. They are also available for Simedax® prostheses on multi-unit abutments for Axiom® BL, and for Connect+® prostheses with Nobel Biocare® multi-unit abutments.

**Anthogyr Group**  
2237 Avenue André-Lasquin  
74700 Sallanches, France  
[www.anthogyr.com](http://www.anthogyr.com)

curasan

## New application video: Alveolar management

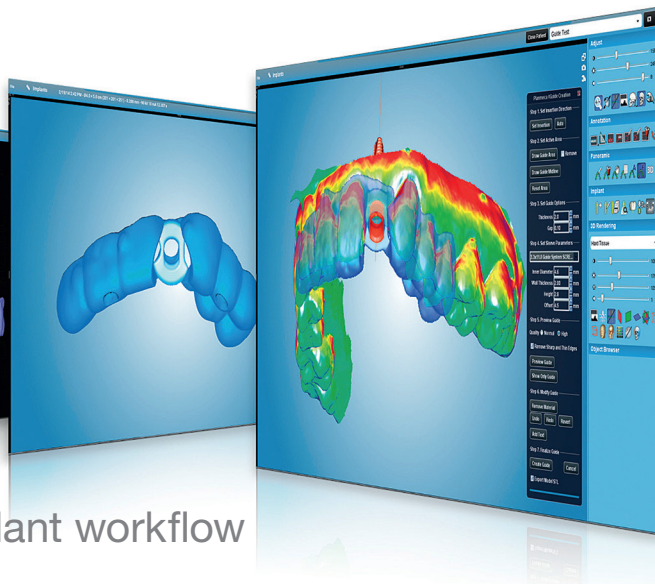


In his current video, Dr Marjan Stojanovski from Skopje, Macedonia, demonstrates how fast and easy an alveolar ridge preservation in the aesthetic zone can be achieved with CERASORB® Foam.

In the case shown in the video, not only the defect is filled, but for aesthetic and functional reasons, also the crown of the extracted tooth was used as a space holder. Thus, allowing the patient to maintain his daily routine. At the end of the video, the one-day postoperative situation is documented.

Its versatility and easiness of use make CERASORB® Foam a product of choice for intelligent alveolar management.

**curasan AG**  
Lindigstraße 4  
63801 Kleinostheim, Germany  
[www.curasan.de](http://www.curasan.de)



Planmeca

## Your key to a fully digital implant workflow

These days, creating implant plans and taking them to actual surgery is easier than ever before, as the Planmeca Romexis Implant Guide software supports all the required steps in a fully digital implant workflow. Everything is controlled and completed with the same software platform—from imaging and scanning to designing and implant guide manufacturing.

Users can capture all needed CBCT images and intraoral scans, perform prosthetic-driven implant planning using the software's comprehensive implant library, and design a surgical guide with a few simple clicks.

Romexis is an open software, which means data can be smoothly imported from other systems and completed guide designs exported in STL format without extra fees. The Romexis Implant Guide module allows designing 3D printable guides for both single and multiple implants—or even fully edentulous cases.

**Planmeca Oy**  
**Asentajankatu 6**  
**00880 Helsinki, Finland**  
**www.planmeca.com**

MIS

## Makeathon—An unforgettable experience for all

In June 2018, MIS held its first Makeathon—a two-day brainstorming event for young engineers, doctors, students and thinkers in general. After an introduction from MIS CEO Idan Kleinfeld,

familiarising the participants with the mission and vision of the company, the first day continued with several fascinating and eye-opening lectures by key speakers, from both the dental world and outside of it.

After a tour of the production facilities, the participants were divided into groups and started to formulate their ideas and work on their presentations. Throughout the entire process, the Makeathon mentors offered advice, vast personal experience and knowledge on what would work best according to the requirements and limitations.

On the second day, each group presented their ideas to the panel of judges. The high-level competition resulted in a third-place winner and two teams who tied for first place. Tali Jacoby, product manager and lead organiser of the event, was extremely pleased with the outcome, saying "MIS is proud that we can support young doctors, engineers and students in order to come up with new and fascinating ideas together. [...] This is a fantastic platform for introducing new technologies which are still unknown to clinics."

**MIS Implants Technologies GmbH**  
**Simeons carré 2**  
**32423 Minden, Germany**  
**www.mis-implants.com**





## Dentsply Sirona

### Thousands of dental professionals at Dentsply Sirona World

Attendees experienced a one-of-a-kind conference from 13 to 15 September at the Dentsply Sirona World in Orlando, USA. The company presented many new products while hundreds of workshops showed dental professionals how to make their work even easier, faster and safer.

Topics ranged from introductory to expert at the 200 breakout sessions available within 12 educational tracks. Hands-on sessions provided attendees the chance to learn from industry experts in a collaborative space allowing them to apply and test their knowledge on the spot. A special highlight was the live surgery, held during the opening general session. A patient was fitted with

a bridge produced with CEREC SW 4.6 for the already-placed implants, which had previously had a screw-retained temporary restoration.

The ultimate objective was for event attendees to leave with ideas on how to improve their daily work within their practice and to expand their network of peers.

**Dentsply Sirona**  
**Sirona Straße 1**  
**5071 Wals/Salzburg, Austria**  
[www.dentsplysirona.com](http://www.dentsplysirona.com)

## MEDENCY

### State-of-the-art diode laser technology

The Italian company MEDENCY has been built upon profound global expertise in the dental market and dental lasers in particular. "Our flagship product PRIMO combines state-of-the-art diode laser technology with innovation and the experience of MEDENCY in the dental industry. PRIMO provides a variety of applications and is thus a viable alternative to conventional surgical methods like electrocautery and the scalpel. Owing to its intuitive interface, the device is easy to use," stated the company's general manager, Alessandro Boschi.

All products are designed, engineered and manufactured in Italy—with passion and commitment. "Our overall mission is to deliver a combination of cutting-edge products, services and interaction with customers drawing on a wide network of academic partners," said Boschi. The company supports its partners with tailor-made educational courses in different countries in order to gain practical experience in the use of the

system in daily practice. Using dental laser technology has never been so easy.

**MEDENCY Srl**  
**Piazza della Libertà 49**  
**36077 Altavilla – Vicenza, Italy**  
[www.medency.com](http://www.medency.com)



**PRIMO**