

## Handy Surgery: Beyond the simple dental unit



■ In recent years, the importance of dental clinics specialising in surgical treatments, and maxillofacial surgery in particular, has increased.

However, the equipment that was available on the market was unable to keep up with this rising trend.

With the Handy Surgery product line, Tecnomed Italia was able to replicate the most important characteristics of a real operating room, producing products inspired by a dental unit, but with more advanced functions.

Made entirely in Italy and designed to meet all the needs of a polyclinic, this product range is ideal for

specialised medical clinics that offer a wide range of services, including dental, cosmetic, dermatological, gynaecological and otolaryngeal treatments.

Handy Surgery is synonymous with:

- Versatility—the equipment and accessories can be adapted to the individual needs of each clinic.
- Linearity—the minimal design and materials that are used give the entire range a professional and streamlined visual look, sending a message of cleanliness and safety to patients.
- Exclusivity—the entire line has two patents that certify its uniqueness and level of innovation for professional orthodontic treatments and more.

The main feature of the product line is the Morpheus dental chair. Due to its four motors, it can easily be transformed into a surgical bed, adapting itself to a dental professional's every need. Aspirol and Maycart, the water group and the quiver, respectively, both with a cart, represent maximum versatility and can be approached or moved away from the intervention area. Thanks to the QuadriLED lamp, the area of intervention is highly illuminated and free of shadows, plus, it is as handy as a dental lamp.

Would you like to become a distributor of the Handy Surgery line?

To request an appointment at IDS (Hall 3.2, Booth G070), complete the form at <http://bit.ly/app-hs-riv>.

More information can be found at [www.dentalsurgeryunit.com](http://www.dentalsurgeryunit.com) ◀

## OXY Implant Fixo line

■ The Fixo line consists of one-stage implants, ideal for the surgeon planning an immediate loading procedure. The one-piece body integrates a multi-unit abutment with an angulation of 0°, 17° or 30°, in order to resolve the lack of parallelism consequent to the insertion of implants with different inclinations. In consequence, Fixo is safe, as the absence of a connection between the implant and the abutment helps avoid problems resulting from bacterial infiltrations and micro-movements.

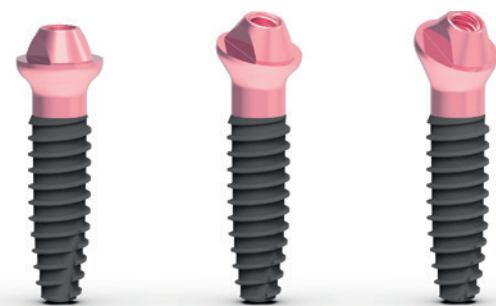
The chamfer is of a considerably reduced size. In the morphologically worst case (17° angulation of the multi-unit abutment platform and 2.0mm



with the consequent safeguard of the bone quantity.

The connection between the prosthesis and Fixo is realised with an M1.8 screw, which is 2.5mm in length and can be tightened to a torque of 30Ncm. In this way, the problem of the possible breakage of the small M1.4 screws conventionally used for screwed prostheses, owing to the considerable masticatory loads, is prevented.

Considering the perfect coaxiality of the multi-unit abutment and implant monobloc and the reduced diameter of the chamfer, Fixo is easy to use with the most popular guided surgery systems. With these characteristics, during its insertion,



fixo

collar), in rotating Fixo around the vertical axis its outermost point is on a 4.8mm diameter circle, compared with the 7.0mm diameter obtained in the same way with a conventional multi-unit abutment and implant system. This means that, even in the most unfavourable situation, Fixo can be inserted without the use of bone mills,

there is no interference with the guiding sleeves positioned in the surgical guide. The template is easily removed at the end of the intervention.

Fixo is available in diameters of 3.5, 4.0 and 4.5mm and lengths of 10.0, 11.5, 13.0, 15.0 and 17.0mm.

More information can be found at [www.oxyimplant.com](http://www.oxyimplant.com) ◀

AD



PROFESSIONAL MEDICAL COUTURE



[croixture.com](http://croixture.com) **SHOP NOW**

## Ultimate patient comfort

■ Your practice revolves around your dental chair, with every patient sitting there whether for a check-up or an implant. If your dental chair is designed to suit the space and workflow of your practice, it can make a significant difference to the efficiency and level of service that your patients receive.

This is particularly important for dentists with a large number of restorative cases, where the patient may be in the chair for a prolonged period. Advanced and comfort-focused dental equipment, such as the A-dec 500, can help keep patients comfortable and relaxed, even during long procedures.

The A-dec 500 has a pressure-mapped, contoured back-rest—without thick upholstery—for superior patient comfort and shoulder and elbow support provided by armrests that

pivot forward, ensuring you have uncompromised access to the oral cavity.

A-dec's award-winning A-dec 500 LED dental light, with its bright daylight-balanced light temperature and unique cure-safe mode for working with composites, contributes to an ergonomic working environment. The broad spread of light and innovative stadium effect from the overlapping LEDs minimises shadowing, and the softly feathered light pattern reduces eye fatigue.

If you are looking to invest in new dental equipment this year, make sure to stop by the A-dec Booth D010 at IDS, located in Hall 11.1, to discuss the most ergonomic options for your practice.

Please visit our website at [www.a-dec.com](http://www.a-dec.com) for more information. ◀



a-dec  
reliablecreativesolutions

# REGISTER FOR FREE!



## DT STUDY CLUB

COURSES | DISCUSSIONS | BLOGS | MENTORING

DT Study Club – e-learning platform

www.DTStudyClub.com



# Join the largest educational network in dentistry!

Hall 4.1, Booth D060/F061

**ADA C.E.R.P.**® | Continuing Education  
Recognition Program

ADA CERP is a service of the American Dental Association to assist dental professionals in identifying quality providers of continuing dental education. ADA CERP does not approve or endorse individual courses or instructors, nor does it imply acceptance of credit hours by boards of dentistry.

