

Creating **unique smiles** with the **Z1** implant system

The French-based company **TBR Dental** is specialised in the development and manufacturing of high-grade implants made from zirconia and titanium. In this interview, Julien Benhamou, CEO of the company, talks about the company and the unique features of their implant system Z1.

What does your company stand for? What's your core philosophy?

For over 30 years, TBR has been sharing a vision with dentists: we want to offer patients the best possible functional and aesthetic restorations. Our team focuses on being the right partner for dentists who are looking to boost their practices with innovative products like the Z1 implant system, which offers unique benefits for dental practitioners and patients alike.

What are the overriding trends in your market?

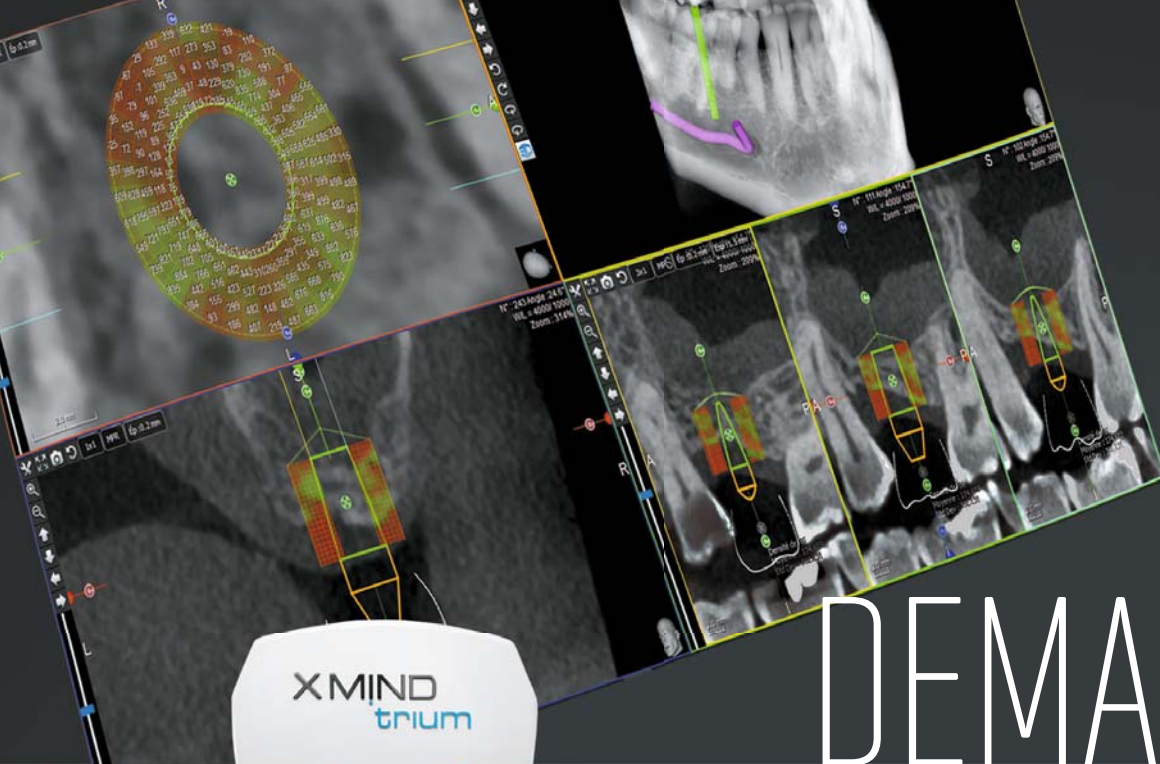
Tissue-level and zirconia implants are answering key challenges in implantology. Today, leading manufacturers like

Nobel Biocare with the On1 concept and the NobelPearl implant, and Straumann with the PURE Ceramic implant system, are offering new tissue-level solutions that enable practitioners to achieve highly satisfactory results.

Analyses by the Schroeder's research team have shown that—in order for implant treatments to be successful—it is vital for dental implants to integrate with the three tissues types that implant placement procedures are predominantly concerned with: bone tissue, connective tissue and epithelial tissue. The challenge of periodontal implant integration is to achieve quality and especially long-term stability between these three tissues. Around a soft-tissue-level implant, the size of the muco-implant junction is comparable to the size of the gingival junction around healthy natural teeth.¹⁻³ Owing to extensive research, there is an ongoing market shift towards minimally-invasive tissue-level implants at the moment. Supported by 20 years of scientific research, TBR is proud to



Fig. 1
Fig. 1: Julien Benhamou, CEO of TBR Dental.



I AM DEMANDING



X MIND trium

3D technology that facilitates implant planning with instant volume measurement and bone density assessment

- Assess volume and bone density in a single click.
- Increase your success rate with a 75µm resolution.
- Focus on the region of interest with a wide range of fields of view.
- Simplify implant planning with a single software.
- Create a detailed and illustrated report in a few seconds.



Hall 10.2 – Booth M060-N069



X-Mind® trium, 3-in-1 extraoral imaging system (CBCT 3D, Panoramic and Cephalometric). This medical device is a class IIb device according to the applicable European Directive in force. It includes CE marking. Notified body: IMQ S.p.A - CE 0051. This medical device for dental care is reserved for healthcare personnel, it is not covered by health insurance providers. This equipment was designed and manufactured in accordance with an EN ISO 13485-certified quality assurance system. Please read the user guide carefully before use. Manufacturer: de Götzen (Milan-Italy) - a company of ACTEON® Group.

For further information, please contact:

SOPRO | a company of ACTEON Group
 ZAC Athélia IV | Av. des Genévriers | 13705 LA CIOTAT Cedex | FRANCE
 Tel. +33 (0) 442 980 101 | Fax. +33 (0) 442 717 690
 E-mail: info@sopro.acteongroup.com | www.acteongroup.com



offer the unique Z1 tissue-level implant system featuring a zirconia collar.



The unique tissue level implants with zirconia collar

What makes your implant system special?

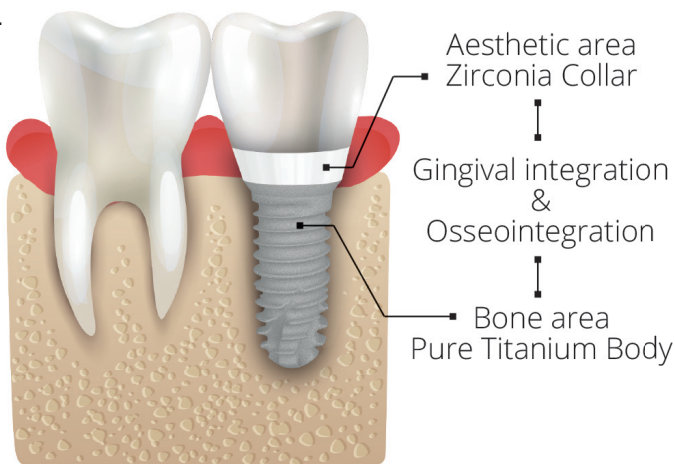
The Z1 system follows a clear philosophy: it is specifically designed to suit the anatomy of every patient. It is the only tissue-level implant which is able to adapt the used materials zirconia and titanium to the surrounding tissues, achieving highly successful osseointegration as a result. A study by Hermann et al., published in 2001⁴, emphasises that—especially in aesthetic areas—the placement of tissue-level implants can have significant benefits for patients, since tissue-level implants resemble natural teeth in many ways.

Unlike other dental implants, which require several surgeries for being effectively placed and restored, the Z1 combines the two reliable and biocompatible materials zirconia and titanium for an improved healing process and, as a consequence, long-term and successful treatment outcomes. When it comes to meeting patients' high aesthetic expectations, we can proudly say that 100 per cent of the treated patients are satisfied with the treatment outcome. In addition, the Z1 can be placed during only one surgical procedure in the dental practice. Moreover, the Z1 system protects the patient's gum by providing high-quality aesthetics and an anti-bacterial shield to the crestal bone and the gingiva.⁵⁻⁶

Z1 is an implant system that offers a highly aesthetic, protective and long-lasting solution, owing to the zirconia collar at gum level, which mimics the colour of natural teeth.⁷⁻⁹ From the patient's side, there has been a clear and strong demand for an implant system like this and—since it's release—patients have come to love it.

Speaking of prosthetic flexibility—what works and what doesn't?

When it comes to design, modern CAD/CAM technologies provide a high degree of flexibility. The Z1 system has



also been developed and manufactured with this purpose in mind. Recent trends have shown that—if we want to limit bone cratering and sulcus depth—we need to move the prosthetic connection away from the bone area.¹⁰ Placing and restoring the Z1 implant is easier, safer and more aesthetic in comparison to other dental implant systems. With Z1, your prosthetic possibilities are only limited by your imagination.

What is the future for TBR?

TBR is excited to invite even more talented dentists to experience the advantages of the new Z1 implant system first-hand. There are many practitioners who have already fallen in love with the Z1 technology, since they are able to create unique patients' smiles with it. Driving our growth in key markets, there is no doubt that the Z1 implant is currently developing to become a game changer in the dental implant market. Apart from growing organically, the TBR Group is also looking to grow through the acquisition of innovative companies. Next step: IDS 2019! Visit us in Hall 4.1 at Booth A058 to learn more about Z1.

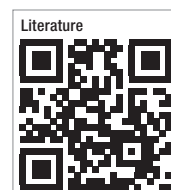
Further information on the Z1 implant system can be found online under tbr.dental, or via e-mail at contact@tbr.dental.



Fig. 2: A placed Z1 implant in the posterior region.

contact

TBR Dental Group
 24 Impasse René Couzinet
 31500 Toulouse, France
 Phone: +33 562 167100
www.tbr.dental



Planmeca Emerald™

Elevate your scanning experience

Planmeca Emerald™ is a small, lightweight and exceedingly fast intraoral scanner with superior accuracy. It is the perfect tool for smooth and efficient chairside workflows. Taking digital impressions has never been as easy!



- Highly accurate quadrant and full arch scanning
- Small and lightweight design
- Impeccable infection control
- Support for a wide range of indications

Find more info and your local dealer!
www.planmeca.com



PLANMECA