

implants

international magazine of oral implantology

2²⁰⁰⁹



Scientific study

Soft Tissue Integration in the Neck Area of Titanium Implants—An Animal Trial

IDS review

IDS for implantologists—Interview with Dr Rolf Vollmer

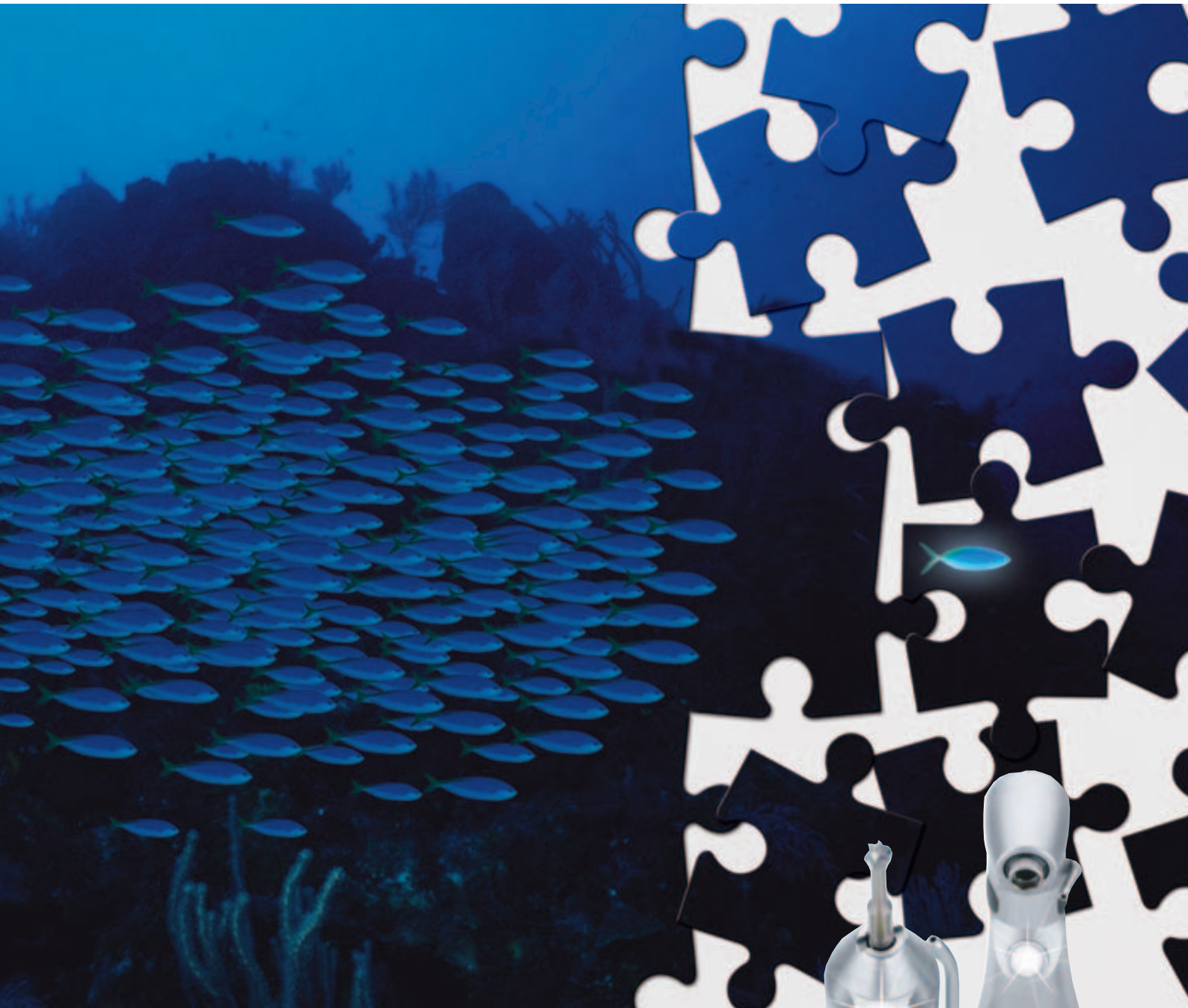
worldwide events

24th Annual Meeting of the Academy of Osseointegration



Now even more innovative.

Easy-to-dismantle surgical instruments with LED and generator



Easy to dismantle. Easy to assemble. As simple as they are efficient: both the S-11 LED G and the WS-75 LED G can be completely dismantled. And, of course, they can be put back together again. Quick, simple and risk-free: meaning that you too are able to eliminate any risks and work in truly optimum hygienic conditions. Get the new standard for yourself: perfect light, global compatibility, precision, ergonomics – and complete safety.

For more information please ask your local dental dealer.

wh.com