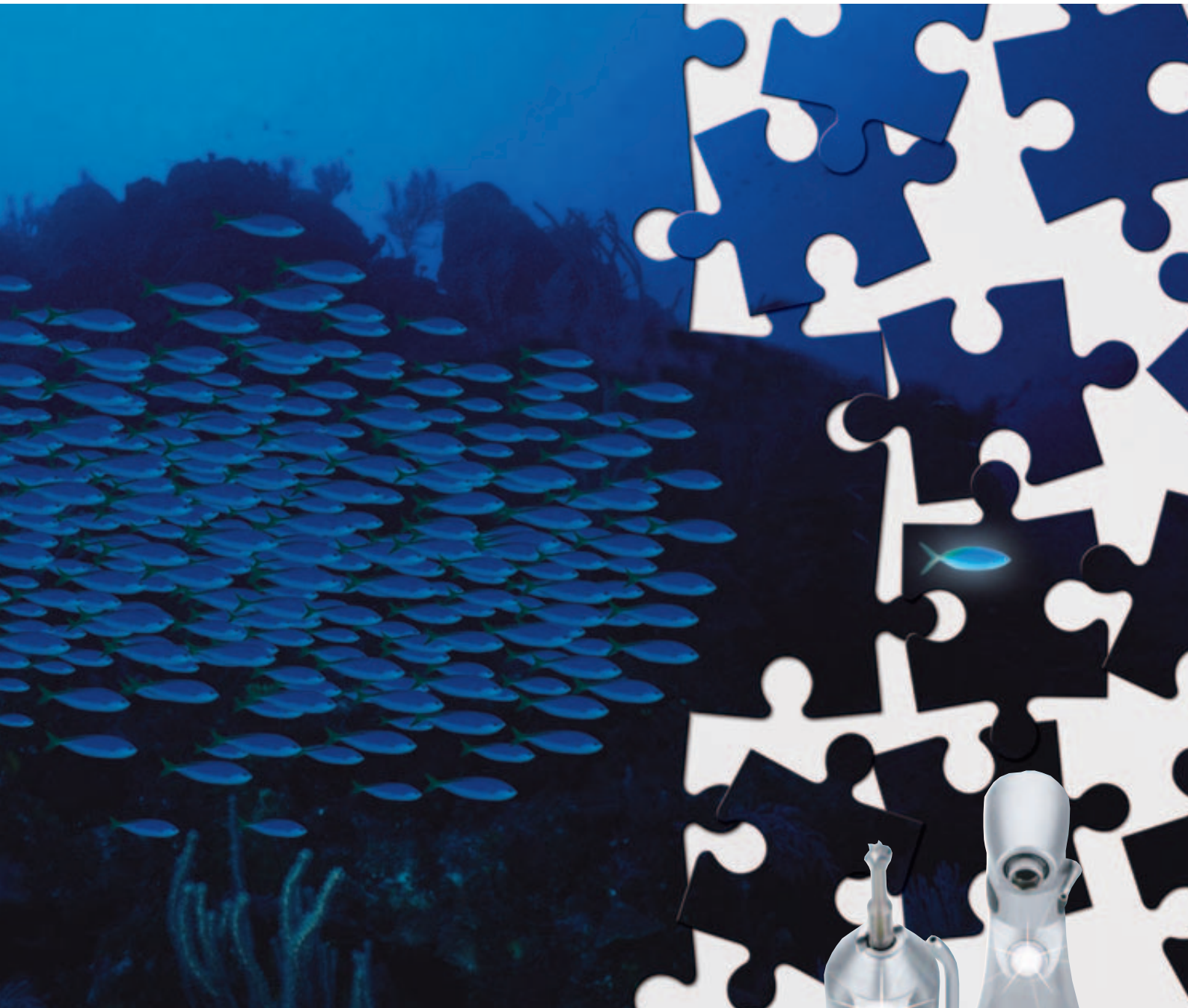


Now even more innovative.

Easy-to-dismantle surgical instruments with LED and generator



Easy to dismantle. Easy to assemble. As simple as they are efficient: both the S-11 LED G and the WS-75 LED G can be completely dismantled. And, of course, they can be put back together again. Quick, simple and risk-free: meaning that you too are able to eliminate any risks and work in truly optimum hygienic conditions. Get the new standard for yourself: perfect light, global compatibility, precision, ergonomics – and complete safety.

For more information please ask your local dental dealer.

wh.com

