

Precision milled, full-contour provisional restorations

NobelProcera offers a new generation of highly esthetic provisional restorations.

■ With Ivoclar Vivadent, a member of its Preferred Partner Program, NobelProcera now offers individually manufactured single crowns and bridges up to 6 units in Telo[®] CAD acrylic.

The material homogeneity of Telo CAD ensures a balance between tensile strength and elasticity with high marginal stability compared with chairside temporaries. The result is a precision milled provisional available in six shades with excellent natural fluorescence and excellent surface finish for outstanding esthetics.

With Telo CAD, NobelProcera will create a new standard for temporary restorations on natural teeth and implant abutments. Milled from a solid bloc of Telo CAD acrylics



Fig. 1: Telo CAD bridges milled by NobelProcera before polishing.



Fig. 2: Telo CAD bridges milled by NobelProcera after polishing.

polymer crowns and bridges up to six units are designed individually using the intuitive NobelProcera Software, industrially produced at Nobel Biocare's state-of-the-art manufacturing facilities, and delivered to the dental laboratory.

This process creates an individualized precision milled full contour temporary solution with a high-end surface finish with exceptional strength.

The restorations are subsequently polished or characterized with

stains and layering materials. Telo CAD is part of Ivoclar Vivadent's temporary solution system which includes next to the veneering materials a composite for provisional cementation and a chairside material for underlining.

Biocompatibility and strongest temporary material

Telo CAD by NobelProcera provides temporary restorations of exceptional fit, natural fluorescence, and optimum soft tissue support. It is easy to polish and has a high strength and stability in marginal areas. Owing to superior material composition and a high-end surface finish, plaque accumulation is extremely low. Telo CAD acrylic polymer is a biocompatible material. ■

Nobel Biocare Management AG

Dr Kai Almek, Postal Box 8058
Zürich – Airport, Switzerland
Tel. +41 43 211 4240
Fax: +41 43 211 4242
kai.almek@nobelbiocare.com

Digital solutions to dental professionals and patients

Renishaw is thrilled to be combining its innovative engineering and CAD/CAM capabilities with Biomet 3i's renowned clinical excellence.

■ Biomet, Inc. announces the collaboration of its subsidiary, Biomet 3i, an industry leader in implant dentistry, and Renishaw plc, a leading manufacturer of in-lab dental scanning systems, to offer comprehensive digital solutions to dental professionals and patients worldwide.

Building on its portfolio of Patient Specific CAD/CAM Restorative Products, Biomet 3i is expanding the boundaries of a traditional "dental implant" company by providing a series of innovative digital solutions from which laboratories, clinicians and patients can benefit. For Renishaw,



Renishaw dental scanner.

which supplies precision engineering products to sectors as diverse as aerospace and neurosurgery, it represents the opportunity to expand its expertise in dental manufacturing to a wider global audience.

These digital solutions offered by Biomet 3i and Renishaw include:

- ▶▶ 3i Insite Copings and Frameworks;
- ▶▶ Renishaw contact scanners;
- ▶▶ 3i Insite CAD software; and
- ▶▶ Renishaw in-lab milling machines.

Using the Renishaw scanner and 3i Insite CAD software, laboratories can obtain broader access to a wide range of dental milling options, including the ability to scan precision copy milled bar patterns.* Laboratories utilizing the ProceraForte[®] Scanner can also benefit from all of these options by using the 3i Insite CAD software.

Clinicians can now offer patients 3i Insite Copings and Frameworks in Zirconia and Cobalt Chroma** and precision copy milled bars***. These options are patient specific and designed to result in beautifully crafted new smiles.

"We feel that this partnership will provide our mutual dental customers with unsurpassed access to the latest in digital dentistry technology," said Maggie Anderson, President of Biomet 3i. Sir David McMurtry, Chairman and Chief Executive of Renishaw plc agreed, adding "Renishaw is thrilled to be combining its innovative engineering and CAD/CAM capabilities with Biomet 3i's renowned clinical excellence and international sales and marketing expertise." ■

Biomet 3i

+1 561 775 6700, www.biomet3i.com

Biomet

+1 574 267 6639, www.biomet.com

Renishaw plc

www.renishaw.com



Biomet 3i Insite

* 510(k) pending for precision copy milled bars (precision Renishaw Systems, not available for sale in the United States).

** Cobalt Chrome only available in Europe. Nobel Biocare Services AG is the owner of ProceraForte mark.

Published by:
Omnis Media AG
Holtstraße 29, 04229 Leipzig, Germany
Tel.: +49 341 48474 0
Fax: +49 341 48474 200
kontakt@omnis-media.de
Internet: www.omnis.com

Publisher: Torsten Gernus

Members of the Board:
Ingrid Goldbach
Dipl.-PSd. Jürgen Isenauer
Dipl.-Betriebsw. Lutz V. Hiller

Chief Editorial Manager:
Dipl.-PSd. Jürgen Isenauer (V. i. S. d. P.)

Marketing & Sales:
Dipl.-Betriebsw. Lutz V. Hiller

Production Executive: Gerald Meyer
Production: Franziska Dieckhoff

ICM today appears during the 27th ICDI World Congress in Hamburg, 28–29 August 2010.

The magazine and all articles and illustrations therein are protected by copyright. Any utilization without prior consent from the editor or publisher is inadmissible and liable to prosecution. No responsibility shall be assumed for information published about associations, companies and commercial markets. General terms and conditions apply, legal venue is Leipzig, Germany.

ICM today is published in cooperation with the International Congress of Oral Implantologists (ICOI) and Deutsche Gesellschaft für Oral Implantologie (DGO).

Ergonomical and easy to use

Single or complete systems by Nouvag AG.

■ No matter if you need a single component or complete system, NOUVAG AG has the solution for you, from Handpieces up to complete Surgical Units. The powerful and userfriendly Motorsystem „MD20“ with a frequency controlled torque system will assure you just as much as the powerful Suction Pump that comes with it. The mobile System „Vacuum 40“ is a ready to use solution for all needs of Dental Surgery. Tri power plugs and antistatic, lockable rollers are provided on the „Sanicor“ rolling frame. The combination of these features result in the ideal Surgical Unit for your doctor's practice. ■



Nouvag AG

Dental and Medical Equipment
St. Gallenstrasse 23–25
5403 Goldach, Switzerland



Implant Direct™

simply smarter.

www.implantdirect.com

Taking Mini-Implants to a New Dimension

Application Specific Implants with All-in-One Packaging

Implant Direct offers the industry's broadest line of narrow-diameter implants, combining the prosthetic versatility of 2-piece implants with the simplicity of application-specific, 1-piece implants. Each 3.0mm+ implant is approved for marketing by the FDA for permanent clinical use because of its surface area and strength. They are self-tapping for ease of insertion and have mini-threads to minimize bone loss. All-in-one packaging includes abutments, transfers and where required: healing collars and cover screws to provide an economical solution for narrow ridges and flapless surgery.

Narrow One- and Two-Piece Implants



3.2mmD

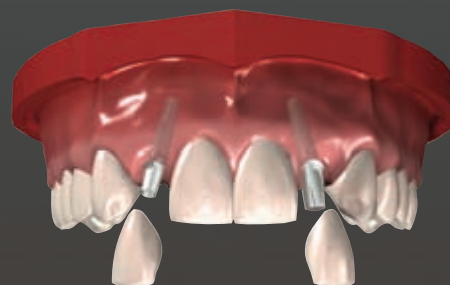


1.8mmD

3.0mmD
ScrewDirect



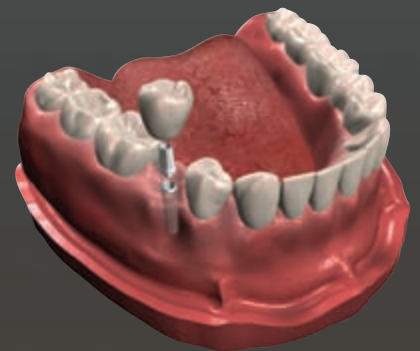
1-Piece Implant with Straight Abutment, Snap Transfer & Cap.



3.2mmD
Legacy3



2-Piece Bone-Level Implant with Transfer, Abutment & Collar.



3.3mmD
Sx-Plant

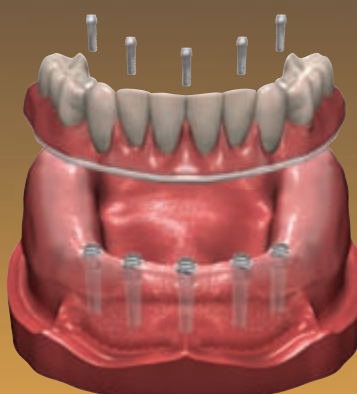


2-Piece Tissue-Level Implant with Transfer, Abutment & Collar.

3.0mmD
ScrewIndirect



1-Piece Implant with Screw Receiving Platform.



3.0mmD
GoDirect



1-Piece Implant.



Legacy™ 3