



Implant Direct™

simply smarter.

www.implantdirect.com

Taking Mini-Implants to a New Dimension

Application Specific Implants with All-in-One Packaging

Implant Direct offers the industry's broadest line of narrow-diameter implants, combining the prosthetic versatility of 2-piece implants with the simplicity of application-specific, 1-piece implants. Each 3.0mm+ implant is approved for marketing by the FDA for permanent clinical use because of its surface area and strength. They are self-tapping for ease of insertion and have mini-threads to minimize bone loss. All-in-one packaging includes abutments, transfers and where required: healing collars and cover screws to provide an economical solution for narrow ridges and flapless surgery.

Narrow One- and Two-Piece Implants



3.2mmD

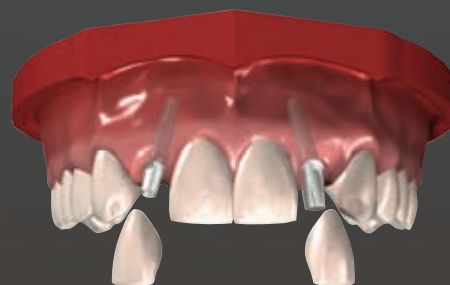


1.8mmD

3.0mmD
ScrewDirect



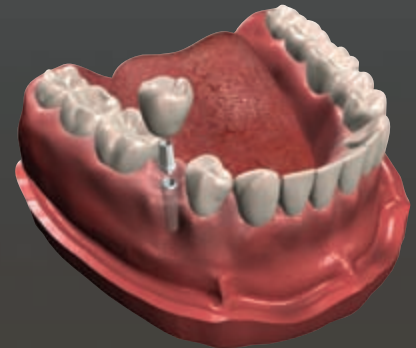
1-Piece Implant with Straight Abutment, Snap Transfer & Cap.



3.2mmD
Legacy3



2-Piece Bone-Level Implant with Transfer, Abutment & Collar.



3.3mmD
Sx-Plant

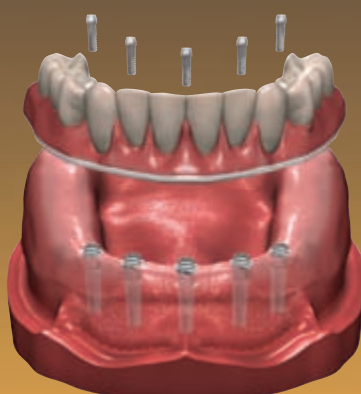


2-Piece Tissue-Level Implant with Transfer, Abutment & Collar.

3.0mmD
ScrewIndirect



1-Piece Implant with Screw Receiving Platform.



3.0mmD
GoDirect



1-Piece Implant.



Legacy™ 3