

CAMLOG

New implant line providing confidence in the field of immediacy



The PROGRESSIVE-LINE was developed to be an implant suitable for all indications. The outer geometry of the new implant line, which is available for both the renown CAMLOG® and CONELOG® connections, was geared to facilitate the implementation of treatment concepts like immediate placement and restoration and has been coupled with highly efficient protocols for the implant bed preparation in all bone types. Well thought-out features of this apically tapered implant, prove to be particularly advantageous in soft bone. Threads down to the apex make PROGRESSIVE-LINE ideal for immediate implantation and a coronal anchorage thread helps to master complex situations in reduced bone height. Additional features encompass a broadened thread height with strongly engaging threads, and flexible drill protocols which allow to adapt the stability according to the needs of the treatment plan. In addition, advanced drill designs offer efficient implant site preparation in dense bone—without requiring additional tools or a tap.

In close collaboration with practising surgeons, CAMLOG® developed a new implant line to meet the demands for shorter treatment times, earlier prosthetic restoration, and fewer sessions.

CAMLOG
Biotechnologies GmbH
Margarethenstr. 38
4053 Basel, Switzerland
www.camlog.com

Straumann

The award-winning design of the new Modular Cassette

The new Straumann® Modular Cassette was designed for change so your cassette never gets outdated. The cassette is a compact and customisable container system for and is compatible with all implant lines of the Straumann Implant System. You can assemble the three modules in different ways to customise the kit with exactly the tools you need. Developed in close collaboration with dental professionals, the Modular Cassette blends into your clinic's daily workflow and supports the team in every step of the process—before, during and after surgery—so that you can work together efficiently and focus fully on the patient. Over the past two years, the project team went through four major design loops and interviewed close to 50 users to get to the final design. Visiting nurses and

doctors in their practices helped to understand the daily routines and individual needs, which change over time. Throughout this process, countless versions of modules and the exact tray designs were created to ensure a seamless, intuitive handling. Also, the design of the new Modular Cassette has been awarded the prestigious Red Dot and iF Design awards for its usability and aesthetics—a further example for the brand's promise of “simply doing more”.

Institut Straumann AG
Peter-Merian-Weg 12
4002 Basel, Switzerland
www.straumann.com



Integration Diagnostics Sweden

Measuring implant stability with a handy device



A trend in dental implant treatment today is to allow shorter time or no time at all before loading an implant. This places high demands on the personnel involved. If the conditions are not optimal, insufficient primary stability can increase the risk of implant failure. NSK's Osseo 100 measures the stability and osseointegration of implants, serving as reliable support when taking decisions when to load the implant. Osseo 100 is the result of years of research and development, driven by a small team of experts consisting of implant specialists and engineers. Integration Diagnostics Sweden AB (IDSAB) was founded in 2015 with the aim of developing a handy

ISQ measuring device (ISQ = Implant Stability Quotient). Since November 2018, IDSAB has been part of the Japanese Nakanishi Inc., primarily known under the brand name NSK, a worldwide leading manufacturer of dental transmission instruments, prophylaxis devices and innovative solutions for dental surgery/implantology.

Integration Diagnostics Sweden AB
Furstenbergsgatan 4
41664 Gothenburg, Sweden
www.penguinrfa.com

MIS

CONNECT abutment system for a screw-retained solution



MIS has released the versatile CONNECT abutment system, which is suited for multi- or single-unit restorations in both digital and conventional procedures. It can also be used for provisional or final prosthetic restorations. The new abutment system is convenient, easy to use, and has advantages over other screw-retained systems that are currently available. Tali Jacoby, Implants Product Manager at MIS, says about the new CONNECT system: "It is a One Time Abutment, which enables a prosthetic procedure above the connective tissue level, distancing the micromovements from the bone."

CONNECT allows for a broader range of screw-retained prosthetics in the aesthetic zone and is suited for one- and two-stage procedures. It supports long-term biological stability by increasing the distance from the bone and providing an ultimate seal. Dr David Norre, who has been using CONNECT since its release, says: "I think the most important reason I use the CONNECT is because I can avoid repeated disruption of the soft tissue, which reduces the risk of bacteria entering the site." This provides his patients with a safe and predictable solution and an aesthetic result.

MIS Implants Technologies GmbH
Simeons carré 2
32423 Minden, Germany
www.mis-implants.com

Nobel Biocare

Welcome to the era of Mucointegration™

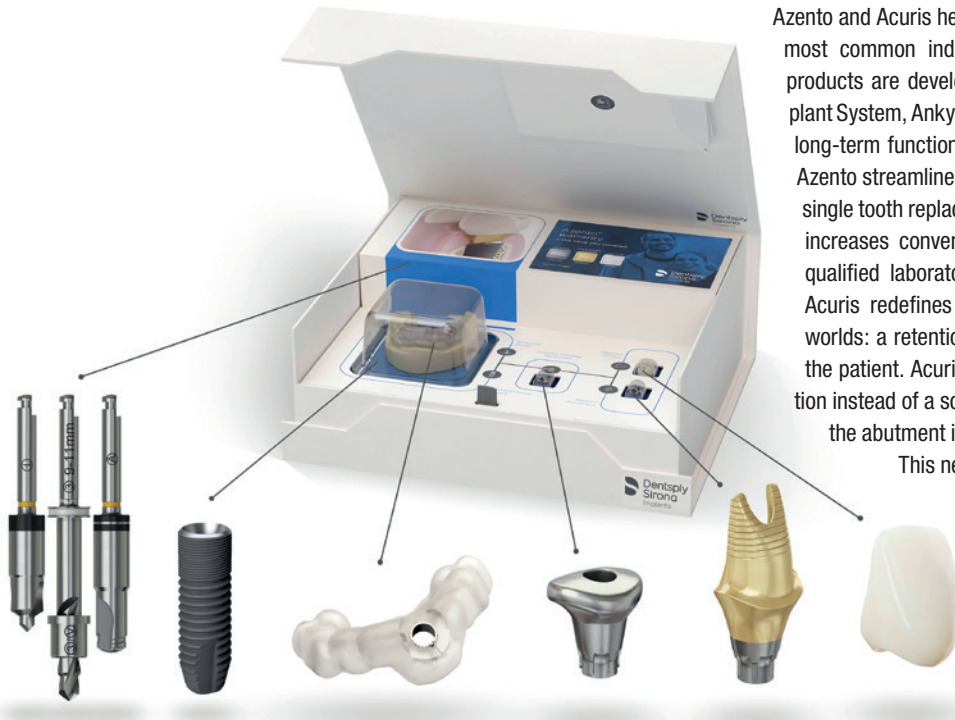
Nobel Biocare's new surfaces for abutments and implants are derived from decades of applied anodisation expertise. From abutment to implant apex, surface chemistry and topography have been reimagined to optimise tissue integration at every level. Xeal is a pioneering surface for soft tissue integration that demonstrates a statistically significant increase in soft tissue height compared to machined abutments. A smooth, non-porous, nanostructured and anodised surface, it possesses surface chemistry and topography that are specially designed to promote soft tissue attachment. TiUltra is an ultra-hydrophilic, multi-zone implant surface that gradually changes from a minimally rough, non-porous, and nanostructured collar to a moderately rough and porous apex. It respects the natural transition from hard, dense cortical bone to spongy, porous cancellous bone to achieve the ultimate goal of both early osseointegration and long-term bone stability. The new Xeal surface is available for the On1 Base and the Multi-unit Abutment. TiUltra is available on Nobel Biocare's best-selling NobelActive and NobelParallel Conical Connection implants. More information about Xeal and TiUltra are available at www.nobelbiocare.com/surface.



Nobel Biocare Services AG
P.O. Box
8058 Zurich, Switzerland
www.nobelbiocare.com

Dentsply Sirona Implants

Azento and Acuris—innovations in single tooth solutions



Azento and Acuris help implant dentistry professionals with one of their most common indications—single tooth replacement. These new products are developed around the implant systems Astra Tech Implant System, Ankylos and Xive, which are clinically proven and provide long-term functional and aesthetic solutions for patients worldwide. Azento streamlines the implant planning, purchasing and delivery for single tooth replacement. For clinicians, this custom implant solution increases convenience, seamlessly and efficiently connects with qualified laboratories, and enables excellent results for patients. Acuris redefines fixed retention and represents the best of two worlds: a retention that is removable for the dentist but is fixed for the patient. Acuris is based on a conometric concept that uses friction instead of a screw or cement to secure the crown and the cap to the abutment in the final prosthetic part of the implant treatment.

This new solution saves time, improves predictability and ensures high-quality results in the clinic, while improving the workflow in the lab.

Dentsply Sirona Implants
Aminogatan 1
41321 Mölndal, Sweden
www.dentsplysirona.com/implants

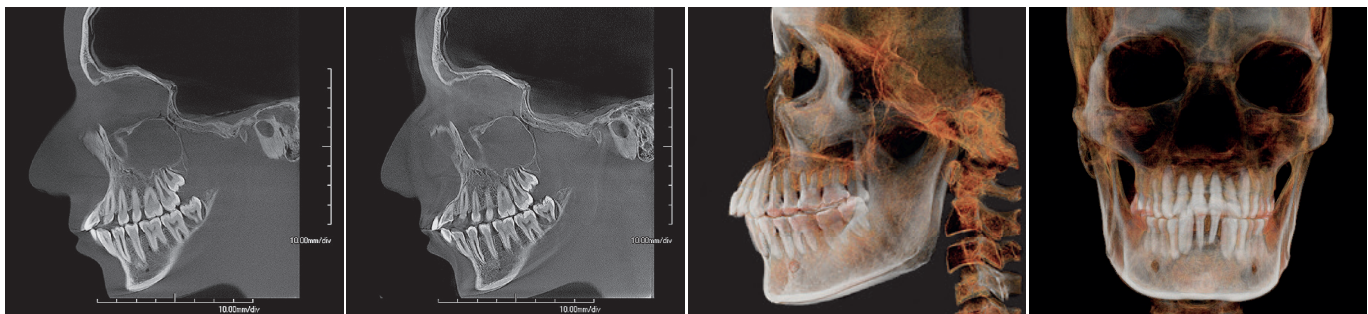
PreXion

Superior 3D image quality with low radiation exposure

With many 3D-imaging systems today, good image quality is usually accompanied by high radiation exposure. Developed specifically for the European and US-American market, the new CBCT system PreXion3D EXPLORER offers the highest possible image quality at the lowest possible radiation levels. With a specifically controllable pulse generator, radiation is generated only when necessary to achieve the highest imaging quality. For a 20-second-long scan in ultra-HD 3D-mode, radiation exposure is only between 4.4 and 5.8 seconds. For a 10-second-long scan in standard scan 3D-mode, it is a mere 3.2 seconds. The small voxel size enables a more detailed representation of even the finest hard and soft tissue structures in ultra-High Definition. The short image reconstruction times

ensure a seamless workflow. The PreXion3D EXPLORER convinces with easy handling and extensive planning programmes that cover the entire range of indications. With the 3D-analysis function, fields of view (FOV) sizes of 50 x 50, 150 x 80 and 150 x 160 mm can be generated, offering numerous flexible diagnostic options for oral surgery, implantology, periodontology, endodontics, orthodontics, and general dentistry.

PreXion (Europe) GmbH
Stahlstraße 42
65428 Rüsselsheim, Germany
www.prexion.eu



100µm voxel size.

74µm voxel size (PreXion3D EXPLORER).

3D image with a 150 x 160 mm field of view.

fixo

break the **speed** limits simply and safely



Made in Italy



Made in Oxy

Three components in a single device.
A Unique product for traditional and guided surgery.
The solution for a quicker, safer and easier immediate loading.

OXY
implant
DENTAL SYSTEM

EAO 2019 28th Annual Scientific Meeting Lisbon 26-28 September
Visit us at: Hall 2 - Booth C03

www.oxyimplant.com



PATENT PENDING



breident medical

breident group goes east

Following the approval of the successful SKY implant system in Russia, the prosthetics specialist breident group, together with their sales partner ARKOM, has greenlit distribution there. Addressing the entire treatment team including implantologists, dental staff, and lab technicians, the German-Russian cooperation focuses on all aspects of “digital dentistry”. At the end of May, the first training congress of the breident group on Russian soil took place in St Petersburg. Over 400 participants attended the numerous lectures, intensive courses and hands-on workshops. Since long-term stable tissue conditions are vital for the success of implant restorations, the participants carefully followed the presentation of the five-year study from the University of Murcia, Spain, on immediate single-tooth restoration with BioHPP SKY

elegance. Also, they were interested in a ten-year study of the University of Graz, Austria, on the whiteSKY zirconia implant, as well as a ten-year study of the University of Ulm, Germany, on the immediate restoration of edentulous jaws by means of the SKY fast & fixed therapy. The grand finale was the evening gala at the Summer Palace of the Tsars in Peterhof just outside St Petersburg, where participants enjoyed a magical “White Night” after a day filled with top-class lectures and training courses.

breident medical GmbH & Co. KG
Weißendorfer Straße 2
89250 Senden, Germany
www.breident-medical.com

ACTEON

A true low dose 3D CBCT imaging system

Premiering at IDS 2019, TRUE LOW DOSE is the latest X-Mind® trium CBCT innovation from ACTEON®, with up to 50 per cent less radiation exposure and no loss of image quality and accuracy. This is possible thanks to new algorithm associated with an innovative mechanism that brings the X-ray sensor and source closer to the patient. This results in increased protection for the patient, while preserving the most reliable and accurate diagnosis possible for the practitioner, without compromising image quality. X-Mind trium has a small field of view (Ø 40 x 40) and provides ultra-high-resolution images (75 µm), making it the new reference in endodontics. It adapts to the growing needs of dental offices by pairing 2D panoramic with 3D imaging and digital cephalometric analysis when necessary. Cephalometric radiography offers simpler patient positioning and the smallest physical footprint on the market. This innovation confirms ACTEON's leadership in the design of less invasive and less traumatic dental imaging technologies.

ACTEON
12 Rue Joseph-Cugnot
33700 Mérignac, France
www.acteongroup.com



TBR Dental

Z1® implant: your comfort in implantology



Dental implants must integrate with its surrounding environment: bone, connective and epithelial tissues. The main challenge involved with implant's periodontal integration is the long-term stability of the implant/tissue interface. The unique design of the TBR Z1® implant, combining a pure titanium body and an innovative zirconia collar, meets these challenges. The titanium body, associated with its sandblasted and acid etched surface, allows an excellent osseointegration of the implant. The zirconia collar promotes soft tissue healing around the implant, mimicking natural gingival growth to ensure optimal results. Moreover, the risk that titanium implants may become visible through the gingiva, compromising the overall visual result, is eliminated with the Z1®. The importance of a healthy smile cannot be underestimated because it can affect individual's self-confidence, self-image and quality of life of a person. With Z1®, practitioners can fully meet their patients' expectations by offering them optimised treatments, restoring not only a function, but also a new aesthetic of the smile.

TBR Dental Group
24 Impasse René Couzinet
31500 Toulouse, France
www.tbr.dental

Oxy Implant

One-piece implant for ideal immediate loading

Today, immediate loading is gaining increasing importance and current software for guided surgery offer a higher level of accuracy, leading more and more clinicians to adopt this approach. Oxy Implant—which has been designing, developing and manufacturing cutting-edge solutions for dental restoration since 1990—wanted to make it easier for clinicians to avoid a difficult phase of the procedure: the screwing of the multi-unit abutment onto the fixture, which is particularly complicated in the posterior zone. Thus, they developed the one-piece implant system Fixo. Its one-piece body integrates a multi-unit abutment with an angulation of 0°, 17° or 30°. After the insertion, clinicians are practically done with their work, as there is no need any more to combine the prosthetic component with the fixture. The connection between the prosthesis and Fixo is realised with an M1.8 screw, which can be tightened to a torque of 30 Ncm. Visit Booth C03 in Hall 2 at EAO 2019 to learn more about Fixo.

Oxy Implant Dental System
Via Nazionale Nord, 21A
23823 Colico, Italy
www.oxyimplant.com



PATENT PENDING

Bicon

Implants driven by simplicity

The SHORT Implants line of the US-American company Bicon perfectly embraces their core philosophy of simplicity. When the Bicon system was first introduced in 1985, its implants with lengths of 8mm were considered quite short in comparison to most other implants, which had lengths of at least 12 to 14 mm or 18 to 20 mm. Since then, the natural



progression of Bicon's design philosophy has resulted in 5 and 6.0 mm SHORT Implants, all with proven clinical success.

Bicon
501 Arborway
Boston, MA 02130, USA
www.bicon.com

SDS Swiss Dental Solutions

The Swiss Biohealth Education weeks— more than just ceramic implants

October							
cw	Mon	Tue	Wed	Thu	Fri	Sat	Sun
40		1	2	3	4	5	6
41	7	8	9	10	11	12	13
42	14	15	16	17	18	19	20
43	21	22	23	24	25	26	27
44	28	29	30	31			

- Biological Dentistry with Ceramic Implants
- Prosthetics on SDS implants
- A-PRF™ and I-PRF™
- Sinus lift
- Neural therapy
- Lifecoding: Nutritional Design
- Lifecoding: Stress-, time-, patient-management and psychology
- The CLEOPATRA technique™ for facial aesthetics

The concept of biological dentistry with ceramic implants according to Dr Karl Ulrich Volz is the central component of the Swiss Biohealth therapy practised consistently and successfully at the Swiss Biohealth Clinic in Kreuzlingen in Switzerland. The symbiosis between biological medicine and biological dentistry, as well as the biological therapy concepts and protocols pave the way for the future of biological medicine. In order to keep up with the constant demand for advanced training courses on the Swiss Biohealth Concept, SDS Swiss Dental Solutions has further developed its Swiss Biohealth Education advanced training centre. From 7 to 19 October 2019, participants will have the opportunity to take part in a wide variety of courses not only on biological dentistry

and ceramic implants, but also biological medicine including topics like neural therapy, heavy metal detoxification, and the PRF technique according to Dr Joseph Choukroun. In addition, there will be numerous “advisory courses” covering the positioning of your practice or stress management. The courses, to be held either in English or translated simultaneously, will be led by Dr Karl Ulrich Volz, Dr med. Rainer Wander, Drs Joseph and Elisa Choukroun, oral surgeon Sabine Hutfilz, master dental technician Joachim Maier, Dr Cleopatra Nacopoulos, or Dr Dominik Nischwitz.

SDS Swiss Dental Solutions AG
www.swissdentalsolutions.com

ClaroNav

State-of-the-art navigation for every day

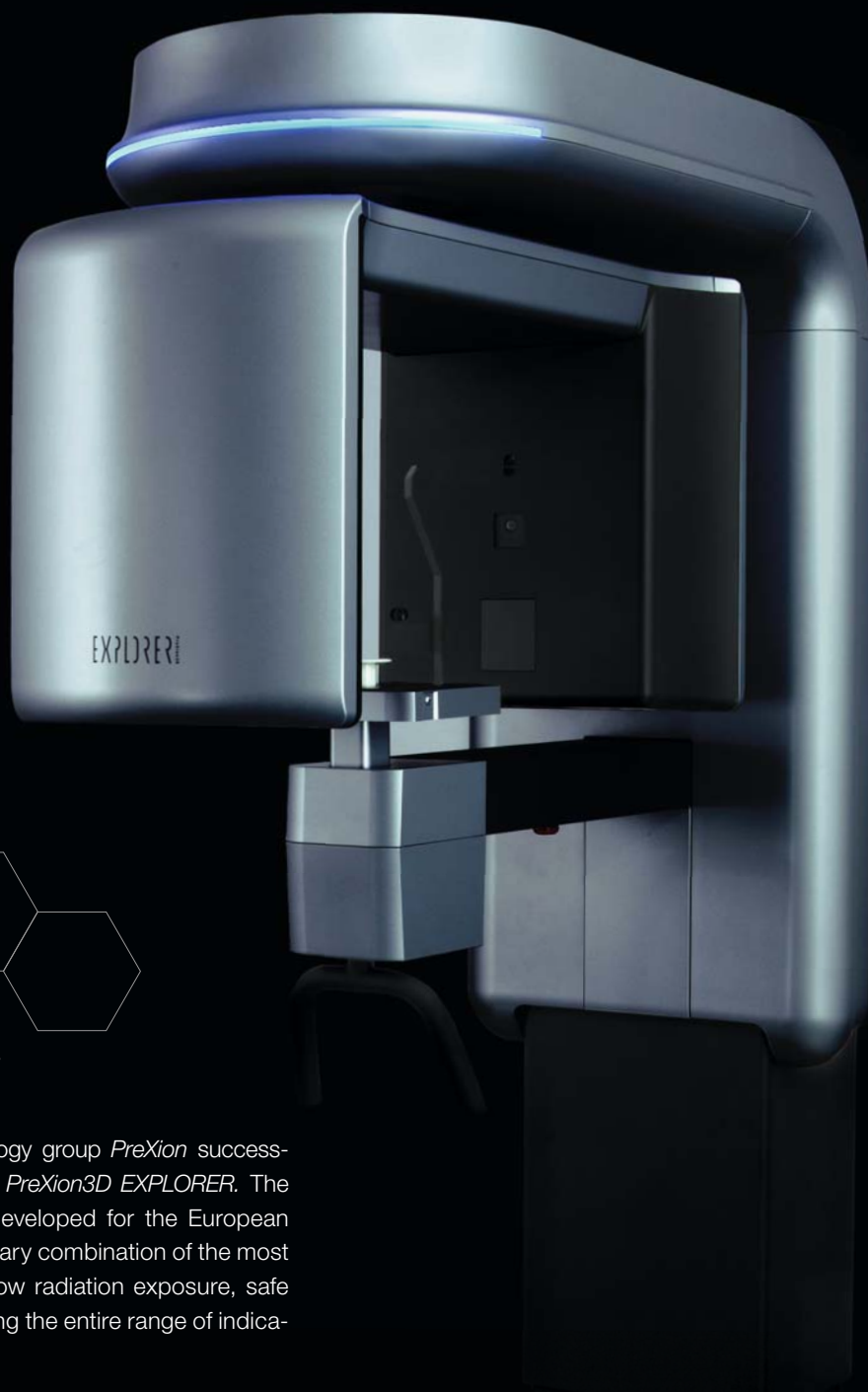
Similar to the way that a GPS system guides you while driving, Navident by ClaroNav guides clinicians by using the CBCT image as a map. It offers surgeons an easy to use, accurate, highly portable and affordable way to plan restorations and implant placements. With Navident 2, clinicians will no longer need to do a special extra scan. They can use the diagnostic scan already available for the patient. The stress of stent making is also gone because a stent is no longer required. Trace and Place (TaP) is a game-changing development for dynamic navigation. With TaP, the Navident workflow is streamlined, efficient, user-friendly and seamlessly integrated into the daily practice. “Trace and Place is a real tipping point for dynamic navigation guidance,” said user Dr George Mandelaris, a periodontist from Chicago, USA. “It has streamlined and simplified the workflow in both the diagnostic and surgical phases to allow state-of-the-art technology to be an everyday component of my surgical implant practice. I can’t imagine going back.” Clinicians are invited to learn from masters and interact with peers at ClaroNav’s Booth C09 at this year’s EAO in Lisbon, Portugal.

ClaroNav Inc.
1140 Sheppard Avenue West, Unit 10
M3K 2A2 Toronto, Canada
www.claronav.com



CBCT WORLD PREMIERE

Show what you're made of—with precision of PreXion.



EXPLORER

PreXion3D

At the IDS 2019, the Japanese technology group *PreXion* successfully introduced their new CBCT system *PreXion3D EXPLORER*. The high-performance system, especially developed for the European and US market, allows for an extraordinary combination of the most precise imaging, great picture detail, low radiation exposure, safe diagnostics and digital planning, covering the entire range of indications in modern dentistry.

Show what you're made of—with precision from *PreXion*.



PreXion (Europe) GmbH Stahlstraße 42–44 · 65428 Rüsselsheim · Germany
Tel.: +49 6142 4078558 · info@prexion-eu.de · www.prexion.eu