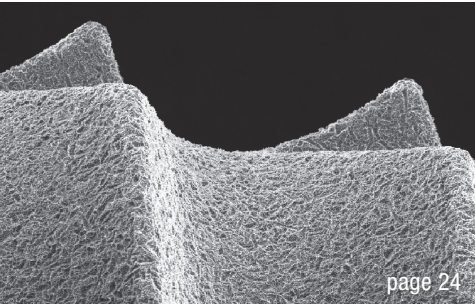


page 06



page 24



page 42

Cover image courtesy of Nobel Biocare
www.nobelbiocare.com

Xeal and TiUltra are currently not available in the USA



editorial

Second **Future Congress** of DGZI—An event for practitioners 03
 Dr Rolf Vollmer

research

Single-tooth replacement using CBCT matching and **virtual wax-up** 06
 Dr Jakob Zwaan & DT Vito Minutolo

case report

Single tooth restoration with the **one-tooth one-time technique** 14
 Drs Louwrens Swart & Paul van Zyl

Implant treatment of **heavy smokers** with **critical** bone situations 20
 Drs Branislav Fatori & Inge Schmitz

industry

Initial stability after placement of a new **buttress-threaded** implant 24
 Dr Enrico Conserva

interview

Good **practice guidelines** for implant dentistry 30

Combining **strengths** towards further **evolution** 32

events

Game changer? Nobel Biocare launches **new implant system** 42

Harmony in a signature smile 44

The inaugural **Dynamic Navigation** Symposium 2019 in Rome 45

news

manufacturer news 34

news 48

about the publisher

imprint 50

MAKE NO BONES ABOUT IT.

CONFIDENCE IN ALL BONE QUALITIES:
PROGRESSIVE-LINE



SPECIALIST IN SOFT BONE:

- Apical conical area for high primary stability in soft bone
- Thread up to the apex, ideal for immediate implantation
- Thread design with deeply engaging thread flanks
- Flexible drill protocol for preferred stability

WWW.CAMLOG.COM

a perfect fit™

camlog