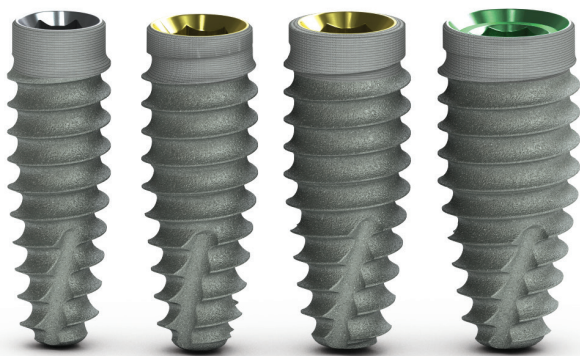


Predictable, immediate results with Tapered Pro implants

BioHorizons Camlog, Switzerland

Immediate implant treatment requires predictability. Tapered Pro implants have been developed based on over 10 years of tapered implant success. The unique design elements provide a predictable solution for immediate treatment. The Tapered Pro implant design features a tapered body and deep buttress threads to provide primary stability. The proprietary buttress thread design compressively loads bone, while the tapered body produces a progressive increase in insertion torque during implant placement. The end cutting, self-tapping thread design of the tapered region of the implant allows for controlled implant placement. These features also help to disperse bone chips throughout the osteotomy. The collar of the implant is designed with a reduced diameter to preserve vital bone, while maintaining a platform switching design. The unique Laser-Lok microchannels on the implant collar create a connective tissue attachment and retain crestal bone.



Laser-Lok is a proprietary surface treatment exclusively used on BioHorizons implants. Its success in maintaining soft tissue and retaining crestal bone levels can be attributed to over 25 years of research. The surface is developed using laser ablation to create circumferential, cell-sized microchannels around the collar of the implant. The optimal size of these channels allows for attachment and organisation of both osteoblasts and



fibroblasts. Laser-Lok is the only surface shown to attract a physical, connective tissue attachment, mimicking the natural connections between teeth and surrounding tissue.

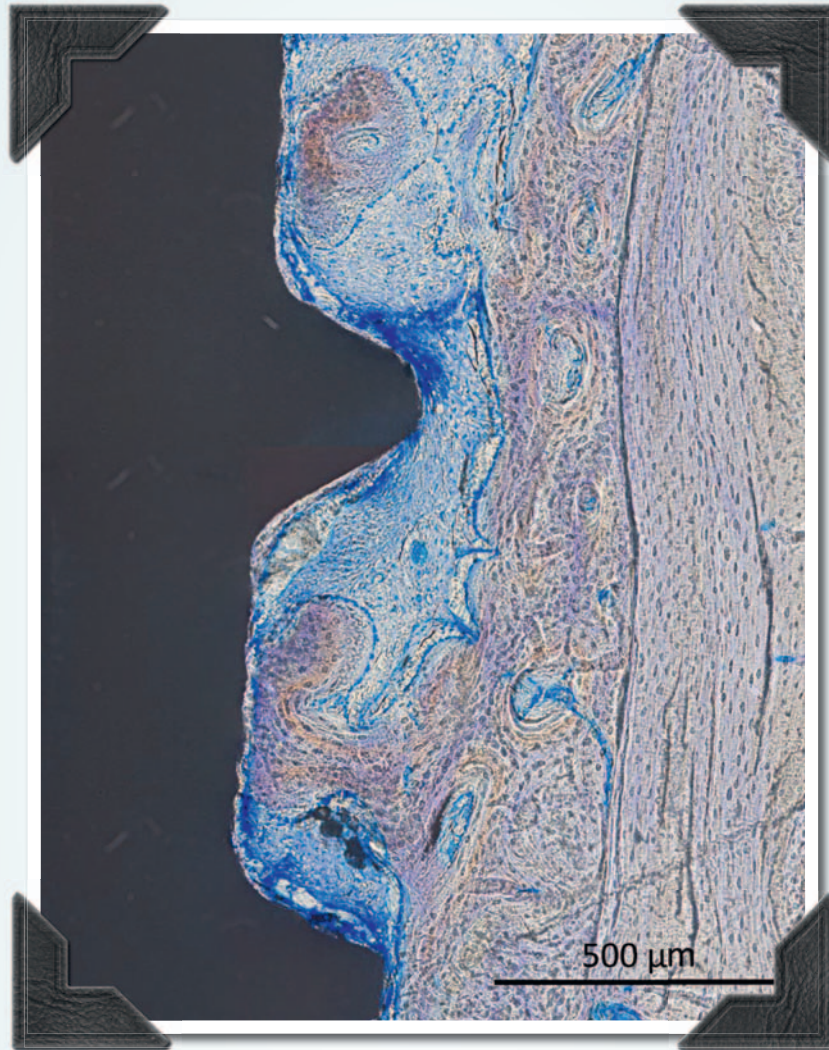
The prosthetic connection of Tapered Pro implants utilises a conical internal hex design for a stable biological seal. The implants are fully compatible with the current line of authentic BioHorizons abutments and prosthetic parts. The prosthetic geometry of both the implants and the abutments are colour-coded using anodisation, providing a simple and reliable method to match the correct components together. The Tapered Pro implants are also compatible with the BioHorizons surgical kit and the BioHorizons guided surgery kit. The protocols for osteotomy development utilise the current line of tapered drills, with protocols for placement in soft bone or dense bone. With the addition of Tapered Pro, BioHorizons broad portfolio of tapered implants provides solutions for all indications. Choose from narrow-diameter 3.0mm implants to wide-diameter immediate molar implants or short 6mm-length implants to 18mm-length implants.

BioHorizons guided surgery system uses an open architecture design, providing compatibility with various software providers and guide manufacturers. For a traditional workflow, BioHorizons comprehensive surgical kit and wide range of prosthetics support the complete restorative process. Tapered Pro implants are offered in 3.8, 4.2, 4.6 and 5.2mm diameters, with lengths ranging from 9 to 18mm.

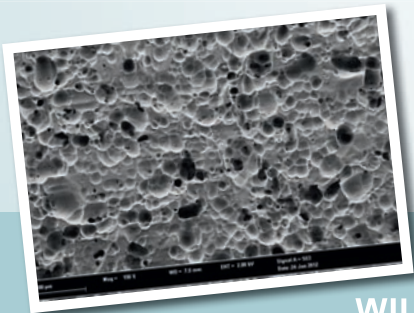
contact

BioHorizons Camlog
Margarethenstr. 38
4053 Basel, Switzerland
Phone: +41 61 5654154
www.biohorizonscamlog.com

FULL OF PRIDE WE SHOW YOU TODAY A PHOTO OF OUR OFFSPRING



*OUR TIZIO HYBRID IMPLANT
2 WEEKS OLD IN MINIPIG**



Generated roughness depths in the glass matrix form the prerequisites for the micromechanical bond**

IN THE NEXT MOTIF WE
WILL PRESENT THE IMPLANT
TO YOU AFTER EIGHT WEEKS IN THE MINIPIG.
CURIOUS? STAY TUNED TO THE LATEST NEWS:
WWW.TIZIOIMPLANTS.COM



TIZIO HYBRID IMPLANTS
The Root of the Future

References:

* Large picture: University Medicine Rostock, Clinic for Oral Medicine Maxillofacial and Plastic Surgery

**Little picture: DOT GmbH