

BioHorizons Camlog

Sometimes less is more: The PL-FLEX tray

The PROGRESSIVE-LINE implant system is based on an implant that is geared to facilitate immediacy concepts such as immediate placement and restoration. With highly efficient protocols for the implant bed preparation for all bone types, the well-thought-out features of this apically tapered implant are particularly advantageous in soft bone. The new PROGRESSIVE-LINE FLEX tray offers practical benefits for the surgical team, and is cost and time efficient for the dental clinic. The FLEX tray is as small as a postcard!

With a reduced number of instruments required for surgery, FLEX offers an efficient drilling protocol for multi-implant cases. This streamlining means efficiency during and after surgery. The drills are clearly marked with colour-coded lines that serve as a guide throughout the drilling protocol. In addition, the instruments for implant placement are organised according to a surgeon's preferred surgical placement procedure. Finally, efficiency and ease of use during surgery is ensured with the visual drill-marks for guidance orientation for drill-depth during surgery. This is all combined in a tray, which has been validated for automated cleaning* and sterilisation. These benefits make the FLEX tray a win-win solution for the whole dental team. Find out more today!

* Ratchet and holding key cannot be cleaned inside the kit; ratchet must be disassembled for cleaning. See reprocessing work instruction.



Camlog Biotechnologies GmbH

Margarethenstrasse 38

4053 Basel, Switzerland

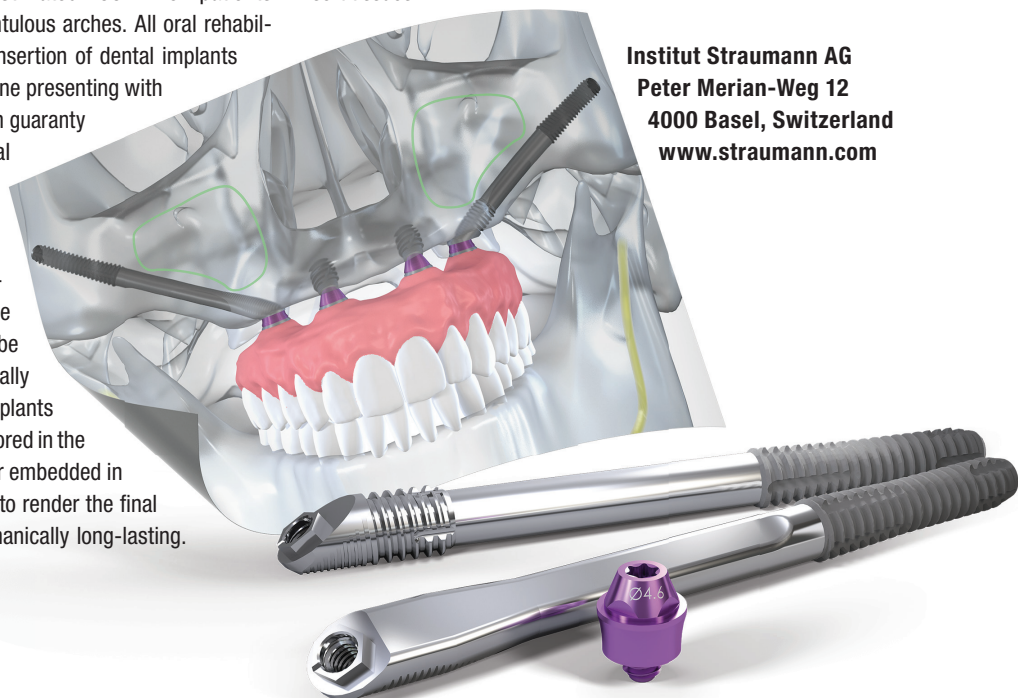
www.biohorizonscamlog.com

Straumann

Treating atrophic maxillae with Straumann Zygomatic Implants

Edentulism is caused by non or too lately treated oral diseases such as dental decays, periodontitis, trauma or cancer. Nowadays, the percentage of completely edentulous patients is declining but this trend is offset by the growth of the ageing baby boomer population which gives rise to an increase in the numbers of completely edentulous cases. By 2020, an estimated 160 million patients present with one or both fully edentulous arches. All oral rehabilitation procedures shall allow for insertion of dental implants supporting synthetic teeth into a bone presenting with adequate strength and volume which guaranty mechanical stability and biological durability. Bone grafting proved to be often unsuitable to achieve adequate maxillary bone volume and permit the placement of conventional dental implants. In these cases, zygomatic implants should be meaningfully considered. Conceptually it makes sense to get this type of implants with its apical extremity firmly anchored in the zygomatic bone and its body further embedded in as much bone as possible in order to render the final rehabilitation biologically and mechanically long-lasting.

With this objective in mind Straumann developed new zygomatic implant designs (called Straumann Zygomatic Implants ZAGA Round and ZAGA Flat) based on anatomical placement and conservative surgical procedure which consequently contribute to the preservation of the maxillary bone envelope and a simplified management of soft tissues.



Institut Straumann AG

Peter Merian-Weg 12

4000 Basel, Switzerland

www.straumann.com

Curaden

Curaprox Perio plus: CHX, but not as you know it

Curaprox Perio plus is a pioneering anti-septic range that contains chlorhexidine (CHX), but not as you know it. The mouthwashes, gel and toothpaste are naturally enhanced with Citrox. As such, Perio plus paves the way towards organic antiseptics with minimal side effects. A recent study by researchers at the University of Bern has found the unique formulation of Perio plus to be especially effective. According to the study, Perio plus has a stronger effect on plaque regrowth than solutions with the same amount of CHX but no additional ingredients. Thanks to the added benefits of natural antibacterial agents such as Citrox—a flavonoid mix extracted from bitter orange—patients can switch to lower doses of CHX more quickly, avoiding side effects and oral dysbiosis during treatment. Moreover, Citrox, in combination with the beta-cyclodextrins in the Perio plus regenerate formulation, could provide a valuable adjunct in reducing the viral load of oral and nasopharyngeal microbiota, potentially including SARS-CoV-2. Perio plus mouthwashes are available in different CHX concentrations, ranging from 0.20% to 0.05%, for individualised treatment. The Perio plus support toothpaste and focus gel contain 0.09% and 0.50% CHX, respectively. Perio plus contains no alcohol or sodium lauryl sulphate. The support tooth-



paste, focus gel and regenerate mouthwash contain hyaluronic acid to promote tissue regeneration. Importantly, Perio plus's pleasant fresh mint taste is a real compliance booster for patients.

Curaden AG
Amlehnstrasse 22
6010 Kriens, Switzerland
www.perioplus.com

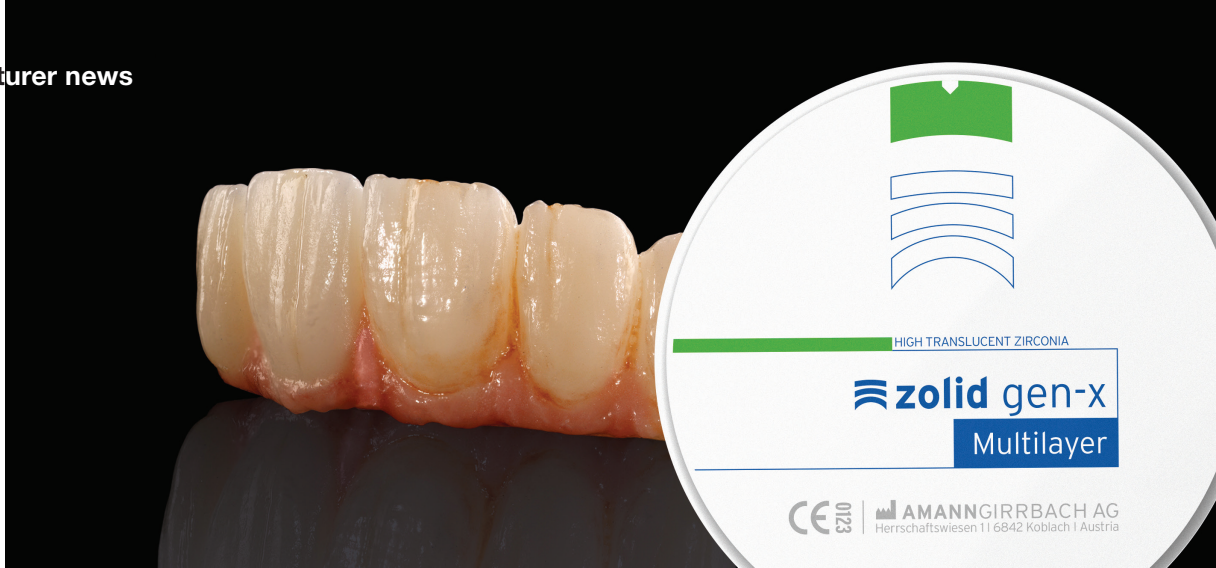
MIS

New 16 mm drill kit for conical connection implant procedures

As part of the company's continuing effort to offer comprehensive solutions for guided surgery procedures in all clinical scenarios, this spring, MIS released their new MGUIDE kit for 16mm conical connection drills used in implant placement procedures. The new kit has already been implemented in MSOFT, the MIS software used for guided procedure planning, and is offered through an automatic update. This new offering extends the existing solution for this range of implant lengths that were not previously available. The kit includes all drills for a complete procedure, as well as the addition of a marking drill which is intended for extraction sites. Orit Kario, MIS Digital Solutions Product Manager, highlights the marking drill, explaining that "it was designed for this specific kit and enables drilling within sockets, providing an added value in immediate placement procedures within extraction sites. The drill's design allows to drill in through the socket wall. In addition, the same kit may be used for both standard and narrow sleeve drills.



MIS Implants Technologies GmbH
Simeons carré 2
32423 Minden, Germany
www.mis-implants.com



Amann Girrbach

One zirconia for all indications

Amann Girrbach has expanded the portfolio of Zolid Gen-X zirconias, thus further reducing the complexity of material selection. The highly translucent zirconia with a natural colour gradient is now available in all heights and shades commonly in use on the market. From now on the blanks are available in 12, 14, 16, 18, 20, 22 or 25 mm heights, eliminating all height limitations. The latter is particularly suitable for large-span, implant-supported restorations with a gingival section. The blanks now also cover the complete range of shades. They are available in 16 A–D VITA shades and two bleach shades. With its integrated colour and translucency gradient, Zolid Gen-X zirconia is the material of choice for virtually all common zirconia indications. The flowing colour and translucency gradient is a perfect imitation of na-

ture. With this all-rounder, laboratories can significantly reduce their inventory and save time-consuming selection processes based on the indication and positioning of the respective restoration. At the same time, users can rely on the advantages of the Zolid HT+ material, which has been proven since 2017 and which forms the basis for Zolid Gen-X. With a flexural strength of 1,000 MPa, it meets almost every requirement for the stability of the restoration.

Amann Girrbach AG
Herrschaftswiesen 1
6842 Koblach, Austria
amanngirrbach.com

curasan

Complete bone regeneration with CERASORB® Foam

CERASORB® Foam is a multi-porous composite material made from collagen and pure-phase β -TCP granules of different sizes and densities. The granules are embedded in the collagen component and are fixed by its fibres. CERASORB® Foam has particularly user-friendly properties. Moistened with blood from the defect or mixed with autologous thrombocyte and fibrin concentrate, the material can be modelled and inserted into the defect precisely and comfortably. The large contact area with the surrounding vital bone allows bone-forming cells to tap into the material and also facilitates the absorption of nutrients and proteins. In addition, CERASORB® Foam is an ideal scaffold for various antibiotics. The special CERASORB® collagen matrix ensures a high level of volume stability after the collagen, which is more rapidly absorbed, has broken down. The high porosity of the granulate, in turn, offers the newly forming bone a stable framework. CERASORB® Foam is completely broken down and replaced by autologous, healthy bone. Over 200 publications prove its success (a list of literature can be provided by curasan upon request).



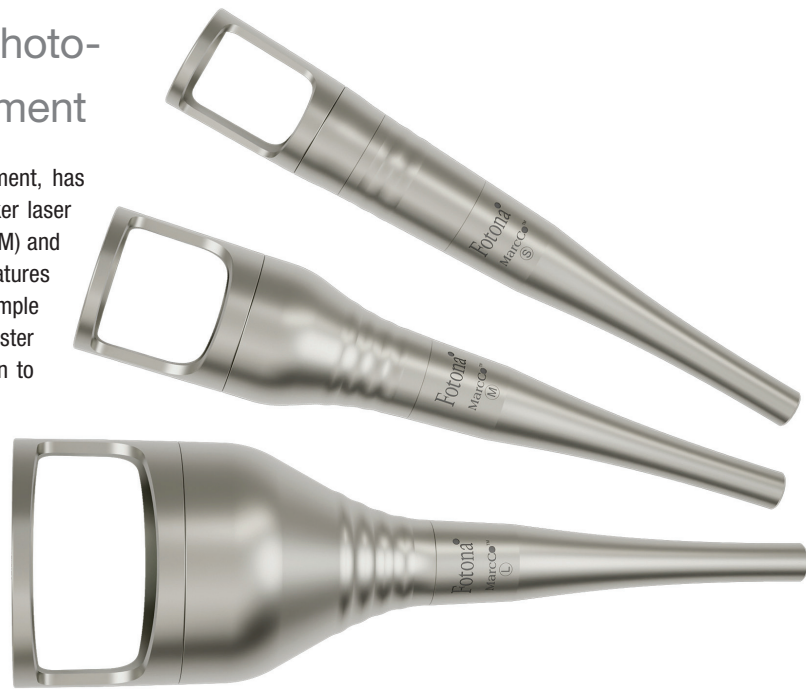
curasan AG
Lindigstraße 4
63801 Kleinostheim, Germany
www.curasan.de

Fotona

New MarcCo™ handpieces for photobiomodulation and pain management

Fotona, one of the leading manufacturers of medical laser equipment, has released a new line of handpieces for its award-winning LightWalker laser system that are designed for more effective photobiomodulation (PBM) and pain management treatments. The new MarcCo™ handpiece line features a modern ergonomic design that is engineered to enable fast and simple non-invasive PBM treatments, such as for peri-implantitis, to ensure faster healing with reduced pain and inflammation. PBM therapy is known to help dilate blood vessels and improve blood circulation while also accelerating tissue regeneration and cell metabolism. The new MarcCo™ handpieces are available in three sizes (up to 43 mm spot diameter), utilise sterilisable spacers and are compatible with Fotona's LA adapter for greater user-friendliness and safety when used intraorally.

Fotona d.o.o.
Stegne 7
1000 Ljubljana, Slovenia
www.fotona.com



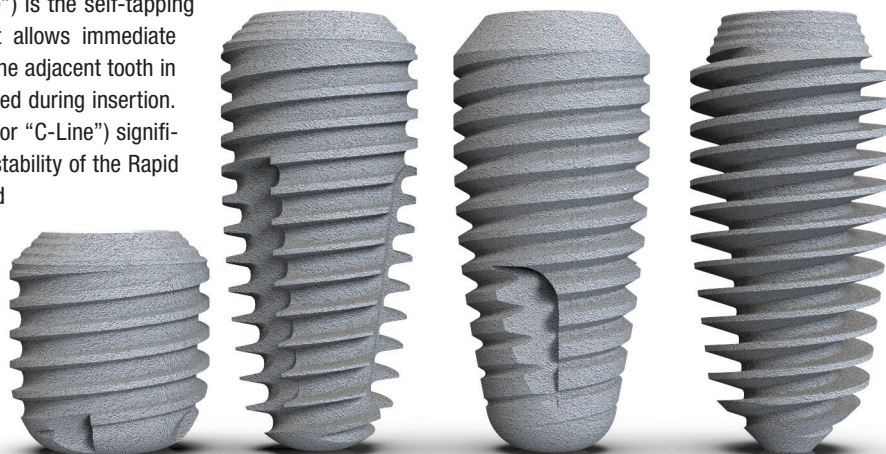
Argon Dental

An implant for every indication

According to fastidious implantologists worldwide, the increasing success of the K3Pro implant system is owed to its well-known capabilities to sustainably preserve bone and soft tissue, its great aesthetics, its great value and, above all, its unrivaled versatility. With only two prosthetic diameter-related platforms and a wide range of lengths and diameters, every indication can be treated with long-term success, thanks in particular to the four different thread designs: the "Sure" (or "S-Line") is characterised by a cylindrical outer shape and is particularly aimed at customers who wish to precisely pre-tap hard bone all the way to the end of the cavity, and who appreciate a high bone-to-implant contact value (BIC). The "Rapid" (or "R-Line") is the self-tapping all-rounder for all bone qualities. It allows immediate loading and can be moved closer to the adjacent tooth in the apical region and can be readjusted during insertion. The newcomer K3Pro+ "Compress" (or "C-Line") significantly increases the known primary stability of the Rapid with its larger cutting threads and enables safe implant insertion in extremely soft bone conditions. In immediate implant placement, this novel and particularly sharp thread type enables the firm fixation to the wall of the extraction socket, and the plateau design allows for

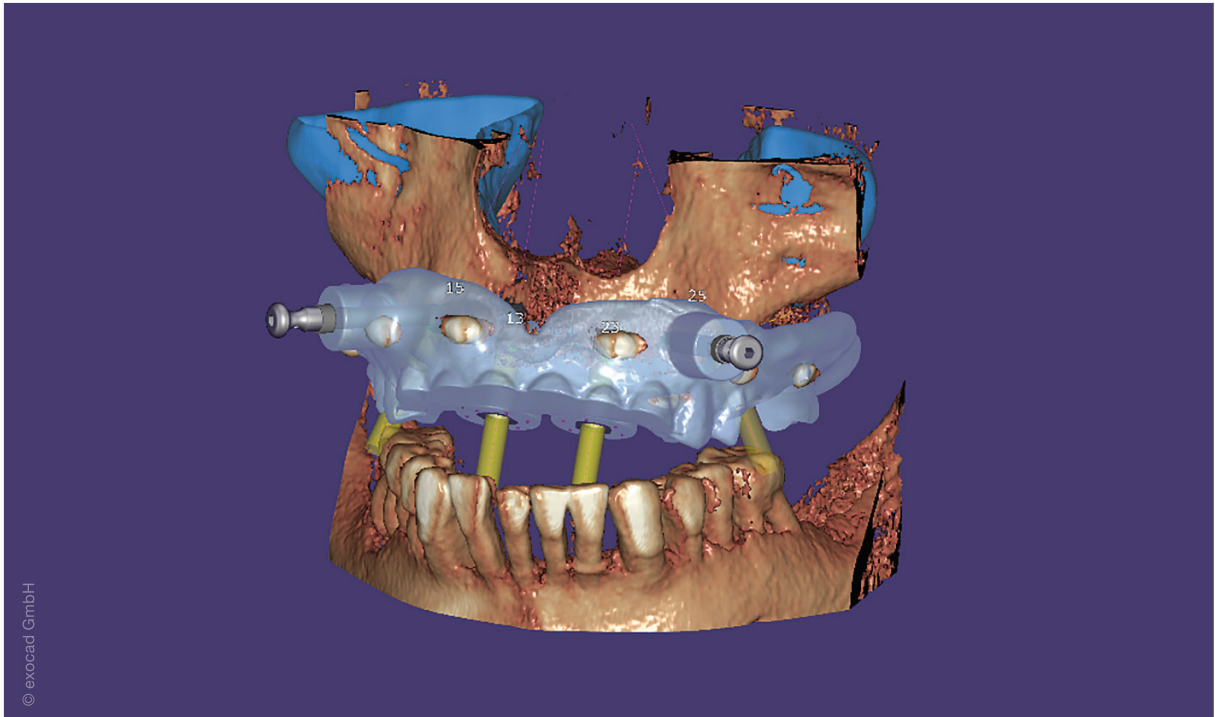
healing exclusively by blood coagulation. The well-proven "Short" line, with lengths starting at just 5.5 mm and diameters starting at 4 mm, complements the portfolio for cases with vertically reduced bone levels—in these difficult situations, the renowned tissue-preserving long-term qualities of K3Pro are indispensable.

Argon Dental
Franz-Kirsten-Straße 1
55411 Bingen am Rhein, Germany
www.argon-dental.de



exocad

New exoplan 3.0 Galway now available



In December 2020, exocad announced the availability of exoplan 3.0 Galway, the latest version of its implant planning software. The new release supports planning of edentulous cases, including design of surgical guides.

“We are excited to announce the release of exoplan 3.0 Galway and enthused about the new possibilities it presents for guided surgery,” said Tillmann Steinbrecher, exocad CEO. “Exoplan 3.0 Galway will provide dental practices and laboratories with a digital workflow that offers maximum flexibility and builds on exocad’s mission to make CAD design as easy as using an app on a cell phone.”

Exoplan 3.0 Galway is a powerful, open, and efficient software package for virtual implant planning. Customised surgical guides can be designed using the Guide Creator software module, and then produced on site—in a laboratory, dental practice, or an external production centre. The software comes in a new, modern user interface, inspired by the Google Material Design system. With more than 40 new features, as well as enhancements to over 60 existing functionalities, the Galway release represents a major expansion of capabilities in guided surgery and improved integration with DentalCAD, exocad’s dental CAD software.

Key highlights of exoplan 3.0 Galway include: Planning of edentulous cases and design of the respective surgical guides, including necessary tools, such as dual scan protocol, anchor pin placement, and fixation guide; surgical and fixation guides can

be freely designed or based on a prosthesis scan; new tools to speed up the entire planning process; improved implant selection dialog; automatic panoramic curve detection; more implant libraries, now with over 500 implant systems and over 8,500 implants from more than 80 manufacturers; virtual tooth extraction on optical scans; possibility to easily mark sinus cavity and check if implants are intruding.

All exocad solutions are based on the same technical platform with an open architecture, ensuring the seamless functionality of the digital workflow: from virtual prosthesis-oriented implant planning with exoplan and designing surgical guides with Guide Creator, to planning and producing the implant-supported, temporary, and final restorations with DentalCAD, exocad’s dental CAD software.

“As the world’s premier OEM supplier of dental CAD software, we provide the symbiosis of prosthetic and implant planning,” said Steinbrecher. “Users can achieve predictable results in a cost- and time-efficient manner, which can ultimately result in increased customer satisfaction.” Exoplan 3.0 Galway is now available in the EU and other select markets.

exocad GmbH
Julius-Reiber-Straße 37
64293 Darmstadt, Germany
exocad.com
exocad.com/exoplan-galway

ISMI

INT. SOCIETY OF METAL FREE IMPLANTOLOGY



The innovative specialist society for modern metal-free implantology

Benefit from the dual membership offer: Join ISMI and IAOCI now

Benefits



Effective public relations

Benefit from a strong community that elevates the marketing of your practice through effective public relations strategies.

Personal online member profile

ISMI provides a personal profile of all active members on their website—free of charge. In addition, the ISMI patient platform provides important information for patients and features a search tool with which patients can find their perfect dentist.



Discount on congress fees

Come and join us! Attend the Annual Meeting of ISMI in Düsseldorf on 7 and 8 May 2021 and benefit from first-rate continuing education. ISMI members receive a special discount on the participation fee.

Online archive for specialists

Get exclusive access to ISMI's extensive online archive. Discuss all relevant questions regarding metal-free implantology with experts and colleagues from around the world and enjoy free access to the online archive where you will find informative training videos and clinical case reports.

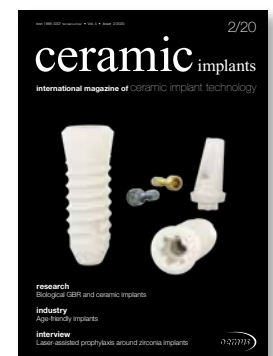


Newsletter

The ISMI newsletter keeps you up to date with the latest scientific trends, products, and events on a regular basis. It also features user reports as well as a wide range of information and tips on the subject of metal-free implantology.

Specialist magazine

As a member of ISMI, your membership fee includes a subscription of the independently published English language magazine *ceramic implants*—international magazine of ceramic implant technology. Published twice a year, the magazine offers specialist articles and event reports as well as industry- and science-related news from the international world of metal-free implantology. In addition, *ceramic implants* provides information about manufacturers and their latest products.



ISMI e.V. Office Leipzig
Holbeinstraße 29 | 04229 Leipzig | Germany
Phone: +49 800 4764-000 | Fax: +49 800 4764-100
office@ismi.me | www.ismi.me

Become a member of
ISMI an IAOCI now—
with our dual membership!

