

Argon Medical

## A combination of main healing aspects and desirable aesthetics

The successful K3Pro implant line from Argon Medical has been enlarged last year by an additional innovation, namely The Compress Implant. The dire need of discerning implantologists to provide their patients with stable provisionals immediately after implantological operations, requires an implant with exceptionally high primary stability—especially in the case of soft bone. For immediate implantations, however, it is often necessary that self-tapping thread flanks secure the implant with the alveolar wall. Also and of much importance is a generous free space for healing through blood coagulation. The new Compress Implants fulfil both aspects mentioned above without neglecting the classic virtues of optimisation for subcrestal insertion for outstanding aesthetics. Furthermore, the anti-bacterial seal, as well as the micromovement-free connection for sustained tissue preservation is also given in this well-rounded idea of the Stable Tissue Concept. The compressive and progressive self-tapping thread for easy and precise insertion in soft bone has a plateau design and offers added primary stability for immediate loading. The implant diameter is measured according to the width of the thread flank, whereas the implant body remains similarly slim. Therefore, the choice of diameter regulates the degree of primary stability.

**Argon Medical, Germany**  
**+49 6721 3096-0**  
**www.argon-medical.com**

BioHorizons Camlog

## The next generation soft-tissue augmentation material

When choosing a biomaterial, there is a strong demand in clinical practice for predictable outcomes. For over 20 years, LifeCell, a leading global medical technology company, has developed innovative products for use in a wide range of applications. BioHorizons Camlog expands its soft-tissue portfolio to bring NovoMatrix, an innovative soft-tissue augmentation material. NovoMatrix is an acellular extracellular dermal matrix consisting of tissue-engineered porcine material. It is a breakthrough in xenogeneic processing



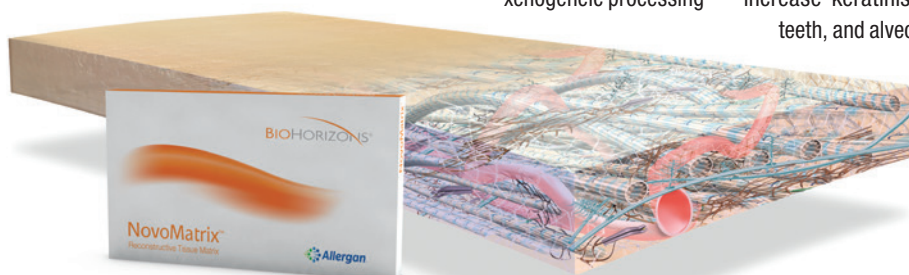
Curaden

## Maximum effect, minimum side effects

The Perio plus mouthwashes—also available as toothpaste and gel—are the result of many years of research with a clear objective: less CHX, greater effect. Perio plus achieves a strong antibacterial effect with thanks to a unique blend of additives.

Valuable expertise and successful use of polylysine and bioflavonoids are combined in Perio plus for the ultimate effect. This development also owes its success to close collaboration with dental professionals who contributed extensive practical experience. Perio plus is a very effective mouthwash, proving itself anew on a daily basis in the fight against acute gingivitis, in the care of implants and in after-care following surgery. This product range is the ultimate showcase of Curaprox's dental hygiene expertise.

**Curaden, Switzerland**  
**mail@curaden.ch**  
**www.curaprox.ch**



ensuring a structurally intact, undamaged scaffold that supports cell and microvascular ingrowth. The proprietary tissue processing allows for rapid revascularisation, cell repopulation and minimal inflammation. NovoMatrix comes pre-hydrated and ready to use and offers a true alternative to autogenous soft-tissue grafts and current products on the market. The NovoMatrix indications include guided tissue regeneration procedures in recession defects for root coverage, localised gingival augmentation to increase keratinised tissue (KT) around implants and natural teeth, and alveolar ridge reconstruction for prosthetic treatment.

**Camlog Biotechnologies GmbH**  
**Switzerland**  
**+41 61 5654141**  
**www.biohorizonscamlog.com**

**Straumann**

## Innovative design with high-performance materials

Straumann® BLX combines innovative design with the high-performance Roxolid® metal alloy and SLActive® surface. The result is an implant system that offers new levels of confidence. The Roxolid® alloy uses 15% zirconium and 85% titanium to maximise excellent osseointegration capabilities. The SLActive® is a high-performance surface with large healing potential. Recent studies have shown SLActive® implants can be used even in very challenging treatment protocols and in patients with compromised health. All BLX sizes have the same prosthetic connection and diameters ranging from Ø3.5 mm to Ø6.5 mm. The Ø3.75 mm implant has already been cleared for all indications and is suitable for all bone classes. Unique properties redistribute native bone along the implant and are designed to achieve optimal primary stability in all bone types.

**Institut Straumann AG, Switzerland**  
**+41 61 9651111 • www.straumann.com**



**Fotona**

## (R)evolution in PBM and Pain Management

In April 2022 Fotona hosted a Photobiomodulation (PBM) and Pain Management online event joining in a world-wide effort to improve the quality of life for countless people and enable a faster healing process with the help of Fotona's innovative PBM and Pain Management therapies.



The initiative provided practitioners with useful information, videos and materials on how these treatments work and how they are applied in various medical fields including dentistry. Fotona introduced its MarcCo handpiece line specifically engineered to enable fast and simple non-invasive PBM treatments for numerous clinical indications, to ensure faster healing with reduced pain and inflammation. The highlight of the campaign was undoubtedly the live Meet the Expert Q&A Session with Dr Jason Pang and Dr Linhlan Nguyen who provided first-hand information and answered practitioner questions.

MarcCo handpieces are available in three sizes (up to 43 mm spot diameter), utilise sterilisable spacers and are compatible with Fotona's LA adapter for greater user-friendliness and safety when used intraorally.

**Fotona d.o.o., Slovenia**  
**+386 1 5009100**  
**www.fotona.com**

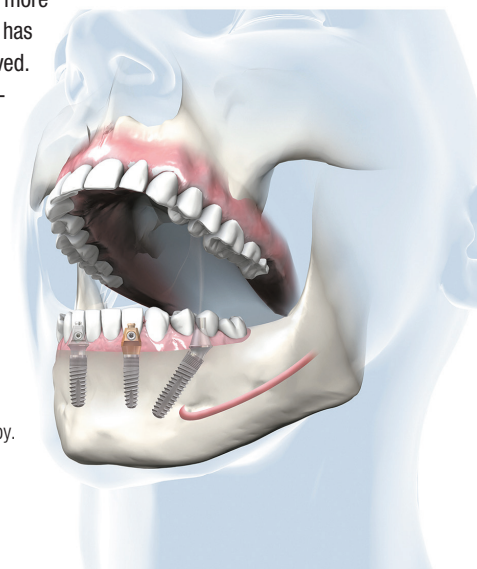
**bredent medical**

## Immediate implant placement: Better than ever

With its SKY fast & fixed implant system, bredent paved the way for its international success some 15 years ago. Since then, the company has continuously developed its system together with users. It is not only a new product, but also a very special and innovative form of therapy: patients who become edentulous can be completely restored with a small number of implants. And this can be done in just one day and with a success rate of over 98 per cent. This is because, in contrast to delayed implant placement, immediate implant placement preserves the surrounding soft and hard tissue and achieves correspondingly better osseointegration. The components of the SKY fast & fixed system have undergone a continuous development process since its market launch. For example, the abutments have become increasingly narrower and more tailored so that there is no longer any bone collision during insertion. Users can count on the company as a competent partner throughout the entire workflow. On the one hand, because bredent, with its

product diversity, can offer practice groups and MVZs solution packages that fit together smoothly. On the other hand, because the READY FOR USE platform also makes communication with external partners such as laboratories child's play. For more than 15 years, the use of SKY fast & fixed has led to a win-win situation for all involved. The patient benefits from a short treatment with the best prospects of success. For the practice, the investment in the immediate restoration brings the maximum increase in added value.

**bredent medical GmbH & Co. KG,**  
**Germany • +49 7309 872-600**  
**www.bredent-implants.com**



More than 500 dental practices and clinics in more than 20 countries offer SKY fast & fixed immediate restoration therapy.