

bredent medical

Immediate implant placement: Better than ever

With its SKY fast & fixed implant system, bredent paved the way for its international success some 15 years ago. Since then, the company has continuously developed its system together with users. It is not only a new product, but also a very special and innovative form of therapy: patients who become edentulous can be completely restored with a small number of implants. And this can be done in just one day and with a success rate of over 98 per cent. This is because, in contrast to delayed implantation, immediate implantation preserves the surrounding soft and hard tissue and achieves a correspondingly better osseointegration.

“We saw SKY fast & fixed as a holistic therapy from the very beginning. Thus, at the beginning, the main task was to develop a reliable protocol with our clinical partners in order to be able to provide patients with a bridge in a few hours,” says Roland Benz, Product Manager at bredent medical. The first comprehensive manual was published in 2008. In the meantime, it has been revised several times and today, of course, also includes the integration of the implant system into different, digital workflows.

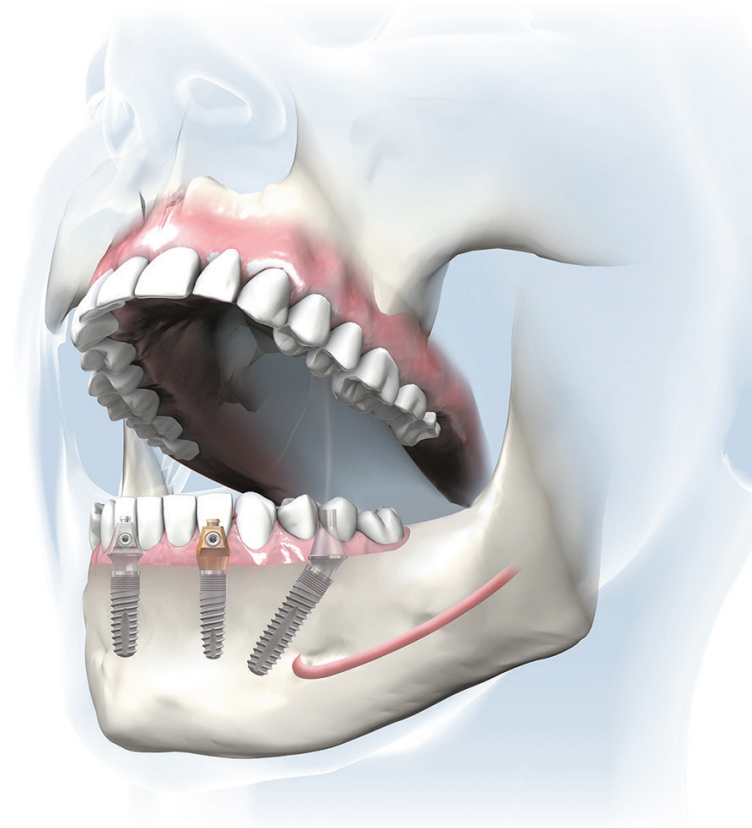
It is the details that counts

The components of the SKY fast & fixed system have also undergone a continuous development process. The abutments have become narrower and more tailored so that there is no more bone collision during insertion. The existing, valuable bone therefore no longer has to be removed. With the transversal screw connection, the german manufacturer offers a special solution for appealing aesthetics in the anterior region, as the occlusal screw channels are omitted here. The closure pin of the screw channel facilitates the fixation of the temporary bridge in the mouth so that complications due to resin in the screw channel can no longer occur.

These and many other special features have been developed by bredent together with users over the past years to round off the SKY fast & fixed therapy.

Competent partner throughout the entire process

With SKY fast & fixed, bredent not only offers a coherent form of therapy: Users can count on the company as a competent partner throughout the entire workflow. On the one hand, because bredent with its product variety can offer



More than 500 dental practices and clinics in more than 20 countries offer SKY fast & fixed immediate restoration therapy.

practice groups and Medical Care Centers complete solution packages that fit together smoothly. On the other hand, because the READY FOR USE platform also makes communication with external partners such as laboratories child's play. It gives the practitioner the possibility to upload his patient data securely to the READY FOR USE platform and to choose an experienced, specialised planning centre. The centre creates a planning proposal, which is corrected and confirmed by the practitioner. The surgical guide and the temporary restoration are then fabricated on the basis of this approved planning.

Win-win situation

For more than 15 years, the use of SKY fast & fixed has led to a win-win situation for all parties involved. The patient benefits from a short treatment with the best prospects of success. For the practice, the investment in the immediate restoration brings the maximum increase in added value. The treatment time compared to classical implantology is at least halved and more patients can be treated. Due to the comparatively short treatment time, there is much less organisational work for the practice and the patient.

Contact address

bredent medical GmbH & Co. KG

Germany

+49 7309 872600

www.bredent-implants.com